

APPENDIX 1

EXISTING RESEARCH

ANGLESEA RIVERBANK MASTERPLAN



Research Summary

Reports Outlined In Brief

58

Existing Reports & Background Information

59 – 60

Concurrent Studies

61



RESEARCH SUMMARY

REPORTS OUTLINED IN BRIEF

These are the documents referred to in the preparation of the masterplan.

Your Visions - Community Plan *Surf Coast Shire*

Your Visions - A Progress Report on Community Planning *Surf Coast Shire 2005*

Victorian Coastal Strategy *Victorian Coastal Council 2002*

Regional Coastal Action Plan - Central West Victoria *Western Coastal Board 2003*

Anglesea Coastal Action Plan (Final Draft) *Western Coastal Board 1999 (currently under review)*

Stage 1 Anglesea Riverbank Masterplan *Contour Design 2002*

Coogoorah Park Masterplan *Thompson Berrill Landscape Design 1999*

Surf Coast Shire Open Space Strategy *Robin Crocker & Assoc. 2004*

Corangamite Regional Catchment Strategy 2003-2008 *CCMA 2003*

- Corangamite RCS Community Draft - *Strategic Overview CCMA 2002 -2007*
- Corangamite RCS Community Draft - *Summary CCMA 2002 -2007*



RESEARCH SUMMARY

EXISTING REPORTS & BACKGROUND INFORMATION

Surf Coast Shire Planning Scheme - 21.12 Anglesea Strategy *Surf Coast Shire June 2005*

Surf Coast Shire Planning Scheme - Relevant Overlays:

- Environmental Significance Overlay ESO3
- Floodway Overlay FO or RFO
- Land Subject to Inundation Overlay LSIO
- Significant Landscape Overlay SLO3

Surf Coast Shire Stormwater Management Plan Vol.1 *ID&A 2004*

Traffic Surveys for Coastal Townships - Surf Coast Shire *Arup 1997*

Anglesea Neighbourhood Character Study *Surf Coast Shire 2004*

Surf Coast Shire Youth Services Review Report *Surf Coast Shire 2004*

Great Ocean Road Region: A land use and transport strategy *DSE 2004*

Regional Tourism Development Plan – Great Ocean Rd *2004-2007*

Landscape Setting Types for the Victorian Coast *Victorian Coast Council 1998*

Siting and Design Guidelines for Structures on the Vic' Coast *Victorian Coastal Council 1998*

Anglesea Neighbourhood Environment Improvement Plan *Anglesea NEIP Group 2004*

Anglesea Caravan Park Fire Management Plan *CFA 2003*

Anglesea Power Station Water Management Manual *Alcoa 2005*

other information provided by Alcoa:

- Information on Community Partnerships, articles, etc.
- Anglesea River Analysis Results



RESEARCH SUMMARY

EXISTING REPORTS & BACKGROUND INFORMATION

Anglesea River Mouth – Report on Options for River Bank Protection *G Byrne 1996*

Surf Coast Walk Development Plan Project – Grant Application *Surf Coast Shire 2004*

Site Identification Mini Poster Series *Aboriginal Affairs Victoria 2003*

Anglesea & District Historical Society Publications & Records

- The Anglesea River: A proposal for survival *Doc Bingley*
- Jottings of the Past No.1 & 2 *Braden*
- The Anglesea Regatta *Cecil & Carr 1987*
- Early Anglesea Houses and Structures *Braden 2004*

Anglesea: A Natural History Study *Angair 2003 Ed.*

PhD on the Dynamics of Anglesea Estuary & Implications for Seagrass Communities

- Background information provided by Adam Pope, Deakin University including river levels 1999-2002

William Buckley Trail Signs *C.O.G.G. 2005*

Great Ocean Road Plaque Project *C.O.G.G. & Anglesea Historical Society 2005*

CONCURRENT STUDIES

These studies were being prepared in the same timeframe as the masterplan and hence their findings were generally unavailable during this stage of the masterplan. Each of these studies is important to the success of the Anglesea Riverbank project and should be referred to during the implementation phase as they become available.

- **Anglesea River Management Plan** *Surf Coast Shire*
- **Anglesea River Healthy Waterways** *Surf Coast Shire & CCMA*
- **Anglesea River Risk Assessment** *EPA*
- **River Mouth Opening Protocol** *Dr Helen Arundel - Deakin University*
- **Dynamics of the Anglesea Estuary: Implications for Seagrass PhD Study** *Adam Pope, Deakin University*
- **Anglesea Coastal Action Plan Review** *Victorian Coastal Council*
- **Central West Estuaries Coastal Action Plan** *Victorian Coastal Council*
- **Youth Strategy** *Surf Coast Shire*
- **Pathway Strategy** *Surf Coast Shire*
- **Arts Strategy** *Surf Coast Shire*
- **Great Ocean Road Gateway/Discovery Centre Business Case Study** *Parks Vic*

APPENDIX 2

CONTEXT ANALYSIS

ANGLESEA RIVERBANK MASTERPLAN



Region Context Analysis	
Roads And Town, Crown Land & Marie Parks	63
Catchment Context Analysis	64
Town Context Analysis	
Town & Great Ocean Road, Access & Movement	65
Land Use, Stormwater Catchment	66
Destinations	66
Historical Context Analysis	
Time Line	67
Images From The Past	68
Aerial Images Over Time	69

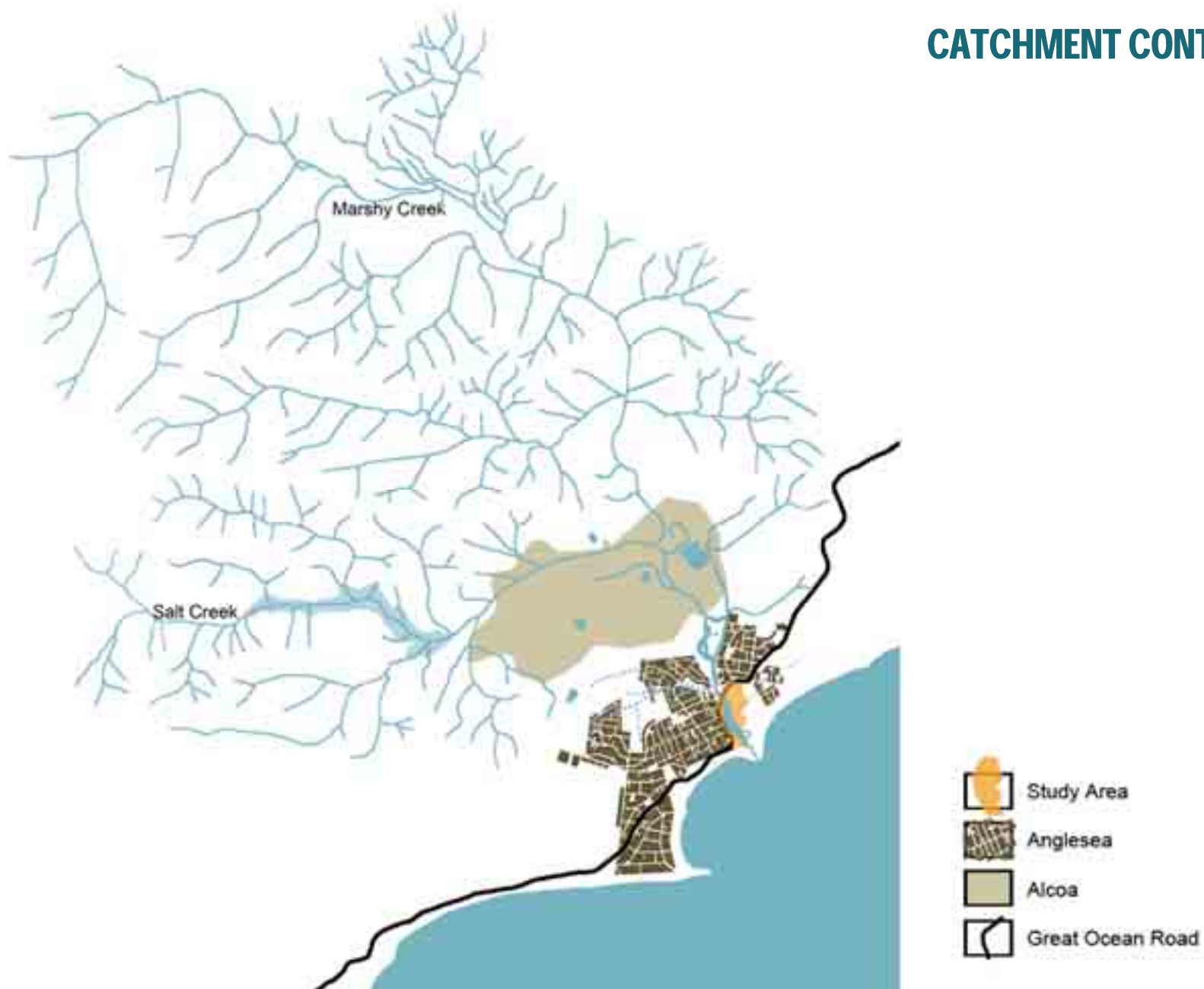
REGION CONTEXT ANALYSIS ROADS & TOWNS



CROWN LAND & MARINE PARKS



CATCHMENT CONTEXT ANALYSIS



TOWN & GREAT OCEAN ROAD



- Study Area
- Angleside
- Great Ocean Road

TOWN CONTEXT ANALYSIS ACCESS & MOVEMENT



- Great Ocean Road
- Secondary Roads
- Local Traffic Streets
- Fire Tracks
- Bridges

LAND USE



- Residential
- Commercial
- Community/Club
- Industrial
- Open
- Open Land
- Food/Chow
- Sports and Recreation
- Nature Reserve
- School Camp
- Water

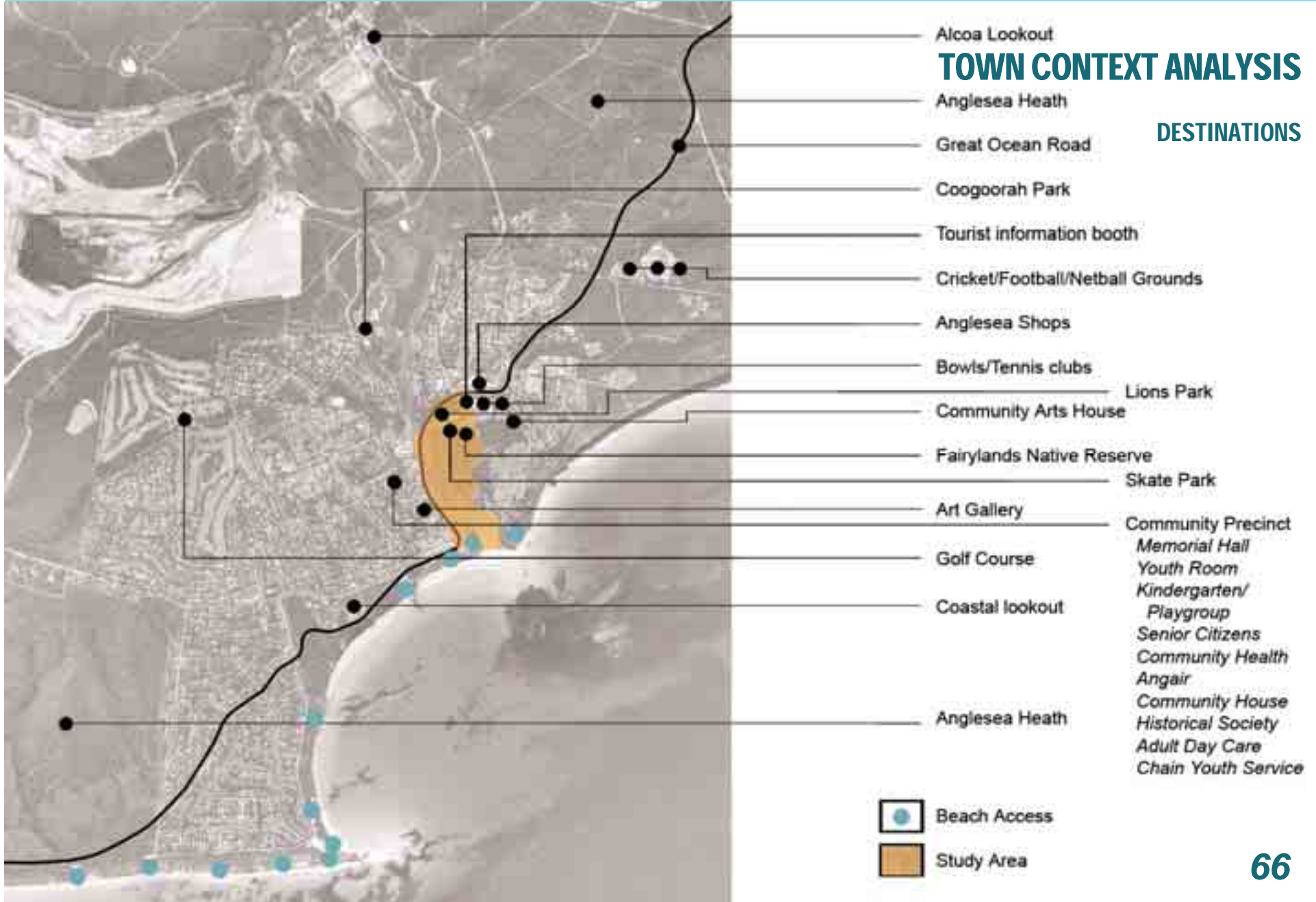
STORMWATER CATCHMENTS



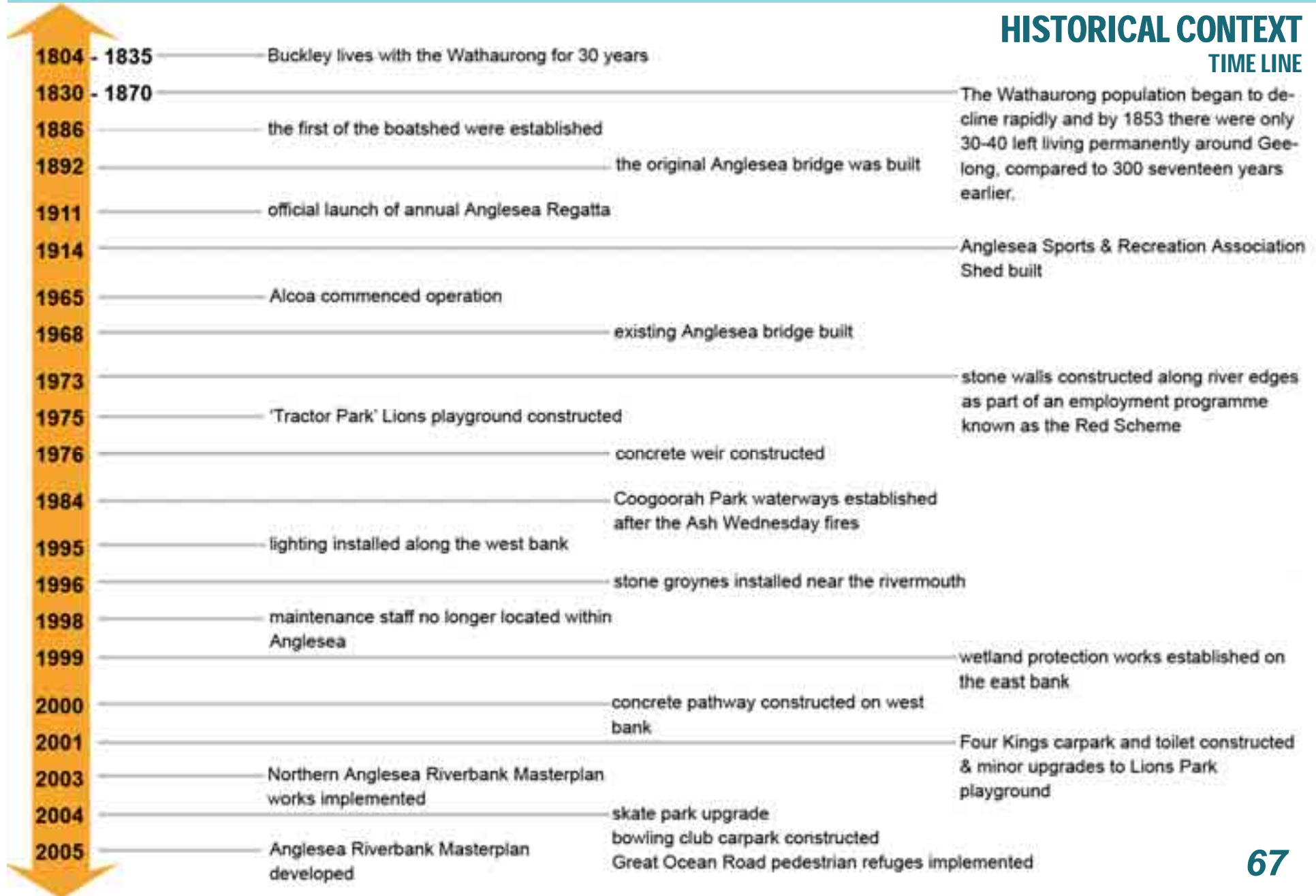
- Catchment areas
- Outlets - closed pipes
- Outlets - open drains

TOWN CONTEXT ANALYSIS

DESTINATIONS



HISTORICAL CONTEXT TIME LINE



HISTORICAL CONTEXT

IMAGES FROM THE PAST



Anglesea Regatta 1911 & 1912



bathing pool 1940-1960



Original Anglesea Bridge



1925-1940



1936



1949



Four Kings 1940 - 1960

HISTORICAL CONTEXT

AERIAL IMAGES OVER TIME

1950's



1961



1972



2005

