



CURRENT PARTNERSHIP OPPORTUNITY

Torquay Soccer Facilities

Kicking goals to cater for the growing soccer population

Men, women, boys and girls are flocking to soccer. The development of a third soccer pitch and lighting upgrade at Banyul-Warri Fields will provide capacity to cater for this growth.

Football Federation Victoria has identified the north of Torquay as a growth participation area. With Banyul-Warri Fields already home to the expanding Surf Coast FC and the elite women's team for the region, Galaxy United, an opportunity exists to expand the booming soccer precinct.

Banyul-Warri Fields hosted the Saudi Arabia team before the 2015 Asia Cup and this project delivers greater capacity to host future travelling teams and regional tournaments.

At a glance

- Seeking partnership to deliver this \$721,000 project.
- A better place to live and visit: a third pitch would increase participation for women and young people.
- Key infrastructure: Surf Coast FC has 410 members which equates to 205 players per pitch – well above the state average of 118 players per pitch.
- Creation of five jobs during construction phase.



Concept development



Business case development



Detailed design



Shovel ready



CURRENT PARTNERSHIP OPPORTUNITY

Surf Coast Multipurpose Indoor Stadium

An active space for people of all ages and abilities

A multi-court facility that will benefit a range of community members of all abilities and ages. With indoor sport participation in Torquay higher than the state average, this community facility will provide a new space for sports such as basketball, netball and soccer which are currently at capacity.

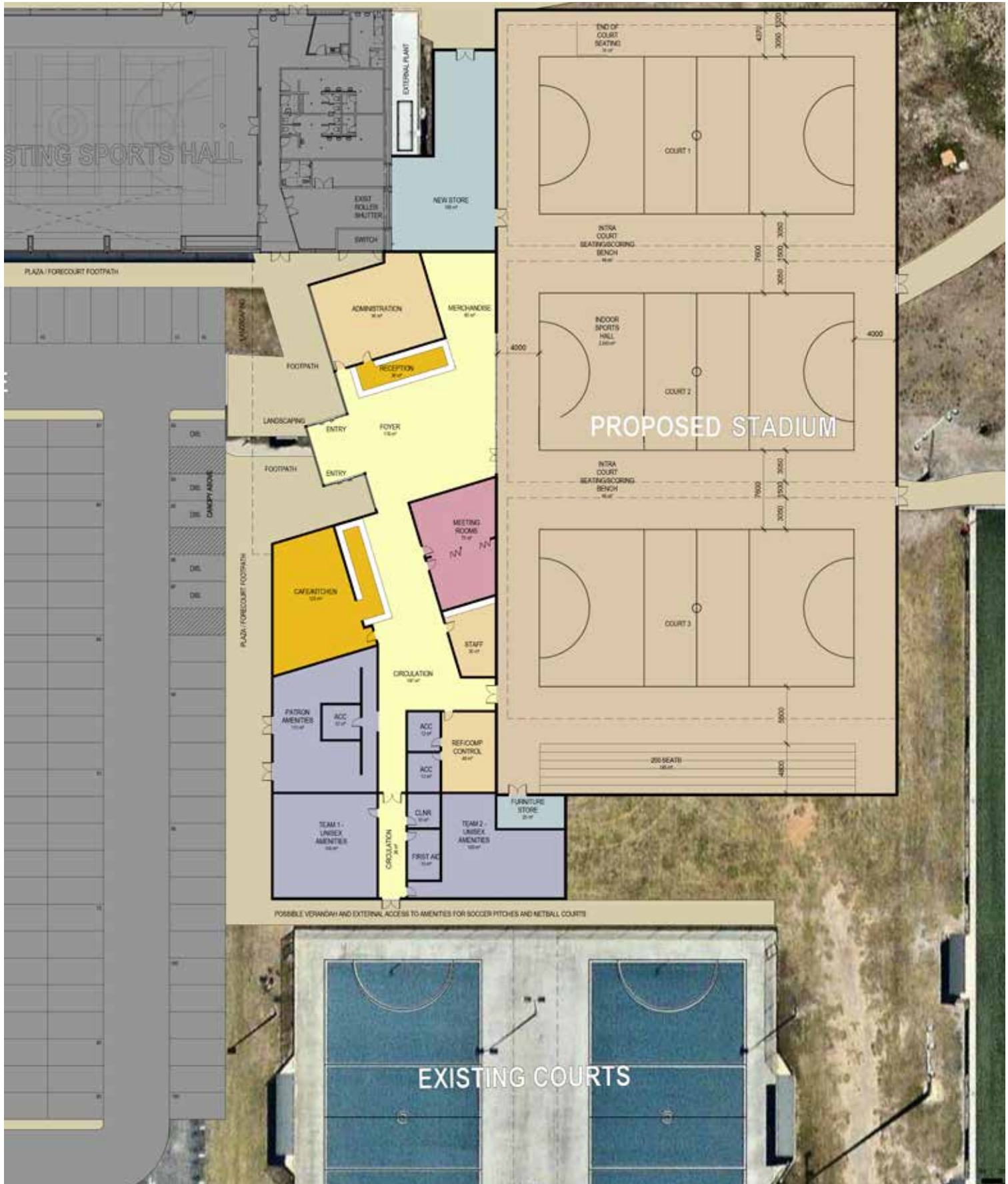
Being located near a secondary school, primary school and kindergarten, the stadium is in an ideal position to cater for various programs. With strong links to education and health, this facility is critical in supporting a growing community.

At a glance

- A \$13.5 million dollar project requiring a strong government partnership.
- Generating an average of 33.6 jobs annually for the next ten years
- Building our economy: anticipated to bring an additional \$1 million per year into the area.
- Growing tourism: a state-of-the-art stadium will attract visiting teams to tournaments in Torquay, delivering a boost for the local economy.



Surf Coast Multipurpose Indoor Stadium





CURRENT PARTNERSHIP OPPORTUNITY

Torquay Town Centre Place Making

A vibrant hub as the heart of Torquay

Torquay's relaxed coastal feel is unrivalled. With the population expected to reach 30,000, it's vital the town centre retains its identity while catering for the needs of a growing community.

The Torquay Town Centre Project is significant, building a more vibrant place for residents and visitors. Elements include sculpture treatments and more spaces to play, experience and explore. Also on the agenda – ensuring there are adequate services, facilities and employment opportunities.

It's a project the community cares about, highlighted by a strong engagement period. People are passionate for the town centre to remain the heart of Torquay.

At a glance

- Stage one is a \$1.2 million project to revitalise Torquay town centre.
- An active move: a town centre that connects pedestrians and cyclists to all pockets of Torquay.
- Building our economy: A key contributor to the 2,200 additional jobs needed in the Surf Coast by 2036 to match population growth.
- A natural winner: embracing Torquay's stunning ocean and foreshore area.





FUTURE PARTNERSHIP OPPORTUNITY

Torquay Walking and Cycling Connections

Active lifestyles and a stronger economy

Torquay Walking and Cycling Connections is a collection of cycling and pathway projects that will offer walking and cycling routes, and support major events.

The project connects our community and improves liveability. As our community grows, Torquay Walking and Cycling Connections will foster more active lifestyles, more sustainable transport, a cleaner environment and improved community safety.

The Surf Coast is well known for hosting elite and community cycling events which inject more than \$10 million into the region's economy each year. This project will help secure the long-term future of these events and boost visitation to the Surf Coast Walk and beyond.

At a glance

- Growing tourism: with a World Tour cycling event on our doorstep, an international crowd will be keen to take in Torquay by bike.
- A better place to live and visit: capitalising on a region defined by stunning outdoor spaces.
- Economic modelling shows \$1 million invested in trails generates 6 jobs and between \$500,000 and \$750,000 in local wages and business profits.

Budget

Council contribution	\$600,000
Current partnership opportunity	\$1,150,000
TOTAL	\$1,750,000



Concept development



Business case development



Detailed design

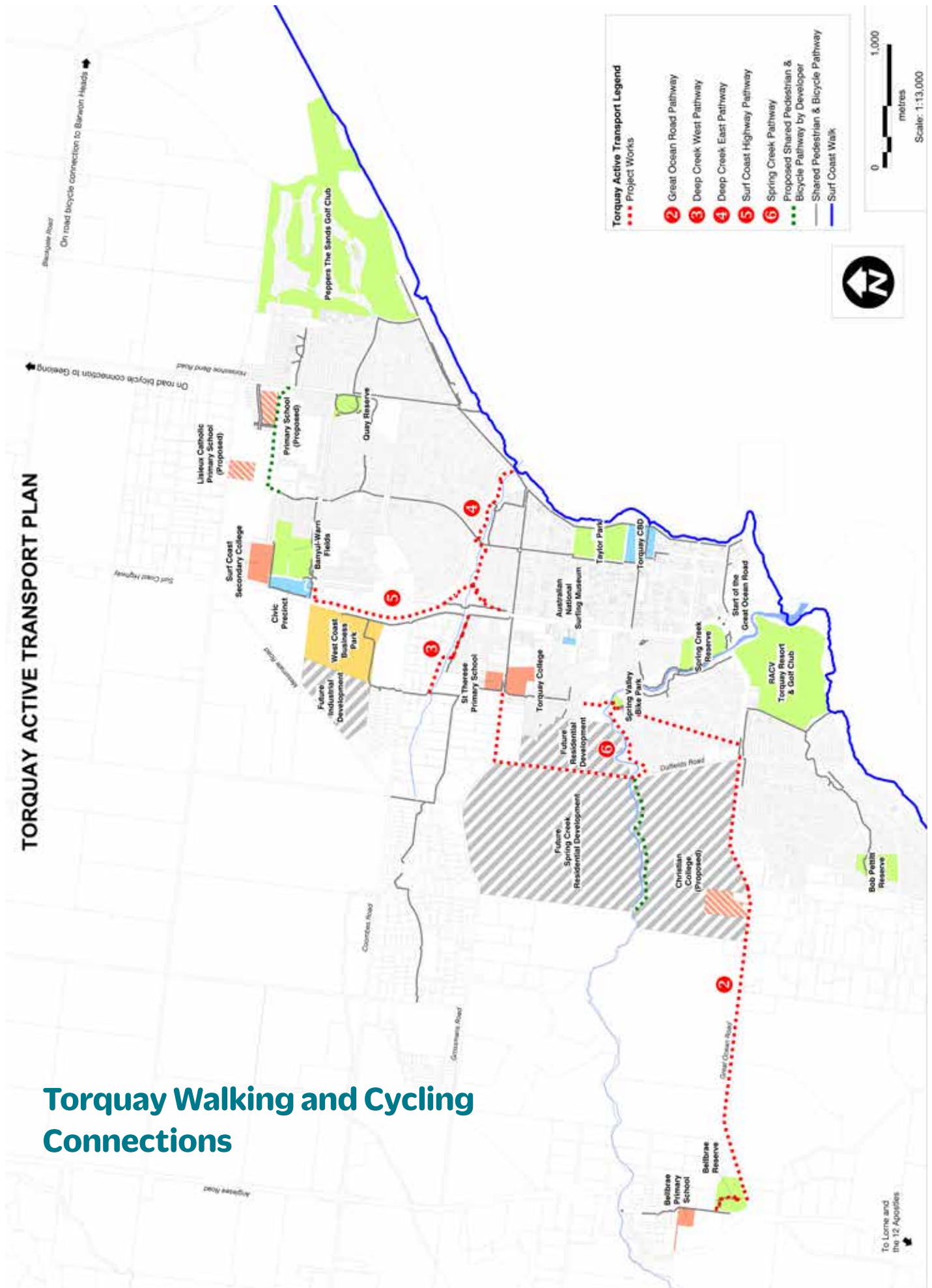


Shovel ready



TORQUAY ACTIVE TRANSPORT PLAN

Torquay Walking and Cycling Connections





FUTURE PARTNERSHIP OPPORTUNITY

Improved Phone and Internet Coverage

The right call: improved mobile and internet access

Strong mobile and internet access play a crucial role in keeping communities connected. With most Surf Coast businesses classed as small businesses based outside of commercial areas, improved access to internet and mobile coverage is a must. In a digital age, the ability for people to tap into technology will enhance visitor experiences.

Access to reliable phone and internet services is vital for community safety in a region under significant bushfire threat.

Council is dedicated to providing services and infrastructure to support the growing community, including fast and dependable internet access. It is seeking a commitment from nbn to establish an affordable and reliable internet service for all businesses, residents and students in the Surf Coast who cannot access the internet.

At a glance

- Seeking funding to address 32 mobile blackspots in the Surf Coast.*
- Building our economy: supporting rural businesses to operate, and non-permanent residents to use the Surf Coast as a business base.
- Information source: keeping residents and visitors connected in emergencies.
- Calling on nbn to make satellite services perform at the same speed, reliability and cost as fixed wireless services.



*Based on Department Communications and Arts Survey 2015



CURRENT PARTNERSHIP OPPORTUNITY

Stribling Reserve Redevelopment

A hub for the community, designed by the community

Stribling Reserve is a key community asset for Lorne. Locals have taken ownership of the reserve's masterplan that will guide the development of the reserve and ensure it meets community needs into the future.

With a netball precinct, pavilion improvements and viewing decks, the development will be a valuable venue for all including school children, female sporting groups, emergency management and visitors to the seaside town.

Located next to Lorne P-12 College, the reserve is easily accessed by students for sport and physical activity. Improved facilities will further support them to lead a healthy lifestyle. The area is also a gathering space for the wider community, attracting events that enable people to connect with each other and participate in community life.

At a glance

- A \$1.4 million investment in the Lorne community.
- Develop changeroom area of main pavilion to service oval users, indoor stadium users and P-12 College.
- A better place to live and visit: a venue for community activities and major events.
- Building our economy: anticipated the reserve will bring an additional \$381,000 into the area per year.
- A natural winner: the development will complement the reserve's unique environmental features.



Concept development



Business case development



Detailed design



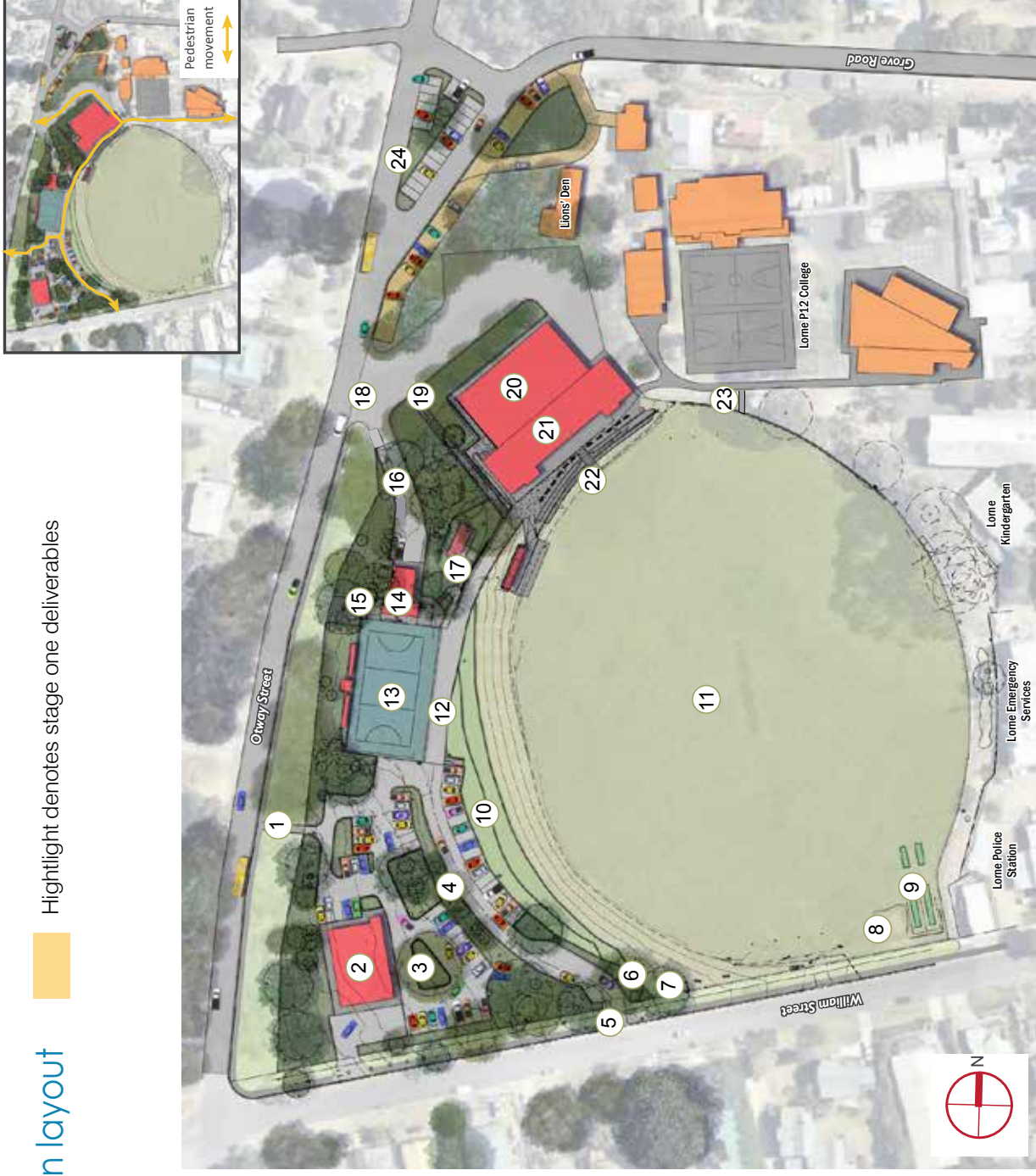
Shovel ready



Stirling Reserve - Master plan layout

Highlight denotes stage one deliverables

1. Retained pedestrian entry
2. Men's Shed
3. Formalised (unsealed) car park (40 spaces) and landscaping
4. Retained sealed car park
5. Upgraded feature entry
6. Retained ticket booth
7. Retained spectator shelter
8. Long/triple jump pit
9. 2-net cricket practice net
10. Grassed tiered seating
- 11. Oval with field lighting, synthetic cricket wicket, covered interchange bench, digital scoreboard (and spoon drain along western boundary)**
12. Resealed internal road with edge treatment
13. Netball precinct (lit court and player/official shelter)
14. New building - netball administration, amenities and change rooms; new officials' change rooms and spectator amenities
- 15. Small children's play node**
16. Service vehicle entry
17. Retained amenities (potentially impacted by future pavilion expansion)
18. Upgraded feature entry
19. Pedestrian link
- 20. Upgraded indoor sports facility (ventilation upgrades, storage, run-offs)**
- 21. Upgraded pavilion (new change rooms and first floor layout alterations that may allow footprint expansion and/or second storey development)**
22. Upgraded terrace seating
23. Retained connections with the College
24. Additional parking development





CURRENT PARTNERSHIP OPPORTUNITY

Horseshoe Bend Road Upgrade

Safer cycling, more activity, healthier outcomes

Horseshoe Bend Road is popular with cyclists as a link to spectacular Surf Coast rides, and part of the world-class Cadel Evans Great Ocean Road Race circuit.

This \$1.65 million upgrading project has clear health, safety and tourism benefits.

Reconstructing a 1.6km section of existing road surface and adding 1.8m sealed shoulders will dramatically increase safety of riders and motorists, encouraging more healthy activity and helping grow the region as a must-do cycling destination.

At a glance

- Project cost \$1.65 million, seeking a \$425,000 partnership.
- Eight direct ongoing local jobs, with additional jobs for contractors.
- Safer cycling resulting in more cycling for visitors and the local community.