

Roadside Weeds & Pests Program Control Plan 2017 - 2019

Municipality Details

Council Name: Surf Coast Shire Council

Key Contact Name: Kate Smallwood

Position: Environment Coordinator

Contact Details: Ph: 5261 0570 ksmallwood@surfcoast.vic.gov.au

Regional Context of Noxious Weed and Pest Animal Management

Surf Coast Shire Council is located in south western Victoria, 20 minutes from Geelong and 90 minutes from Melbourne. It is strongly influenced by physical and topographical features which impact on urban development and land management. The Shire is characterized by a diverse range of environments from rugged coastline and dense native forests to rolling, rural plains.

The southern part of the Shire consists of a linear pattern of coastal townships including Torquay, Jan Juc, Anglesea, Aireys Inlet, Fairhaven and Lorne. With the exception of Torquay and Jan Juc, these townships are sited on the coastal edge of the Otway Ranges and are surrounded by large areas of national and State park. North of the Otway Ranges is a large rural community, with population centres at Winchelsea, Moriac and Deans Marsh.

Council is committed to improving pest plants and animal management on Council owned and managed land and has considerably increased its own investment in the past 5 years. A partnership approach with other land managers and the community is critical for effective pest plant and animal management, particularly as Council owns or manages just under 1% of land in the Shire. In terms of municipal roadsides, Council is responsible for managing approximately 1,500km of local rural roadsides, including approximately 513km of high conservation roadsides and 345km of medium conservation roadsides.

Historically, Council's focus for roadside pest management has been on Regionally Controlled weeds like Gorse and Blackberry and also rabbits, an established pest animal. State Government funding in recent years has specifically targeted Serrated Tussock (in the priority containment line area), Gorse and rabbits.

Through past State Government funding initiatives Council has treated approximately 1000km per year of roadsides for Regionally Controlled weeds and pest animals. There are currently no Regionally Prohibited weeds in the Shire, a situation Council is keen to maintain, in particular by focusing Council resources on new and emerging pest plant and animals. Please refer to Table 1 for a list of current target species.

Community Consultation

Surf Coast Shire Council is committed to working in partnership with community groups, private landowners and other land managers to manage pest plants and animal in the Shire. This partnership

approach also applies to management of roadside weeds and pest animals.

Council is well aware of key community concerns and priorities regarding pest plant and animal management in the Shire through regular interaction with the community including:

- Capacity building and support to key community groups:
 - Upper Barwon Landcare Network;
 - Surf Coast & Inland Plains Network (SCIPN);
 - Surf Coast Rabbit Action Network (SCRAN);
 - Geelong Landcare Network;
 - Barrabool Hills Landcare;
 - Anglesea, Aireys Inlet Society for the Protection of Flora and Fauna (ANGAIR)
 - Lornecare

Support is provided in various ways including printing and mail-out and/or financial support for community pest plant and animal materials; event sponsorship, attendance and speaking at community events; input and advice on best management practices; provision of free mulch and support for community group weeding and re-vegetation works in Council nature reserves.

- Information and advice to residents (via phone and/or email) in response to a wide range of pest plant and animal concerns and complaints;
- Coverage of pest plant and animal issues in Council's newsletter, the Mayor's column in local newspapers and stories in local media.

Council has also developed a variety of materials regarding pest plant and animal management that reflect and incorporate community concerns and priorities. These resources include:

- Council's website – general pest plant and animal advice
- Weeds of the Surf Coast Shire booklet featuring 80 weed species currently of concern
- *Top 20 Weeds* brochures for:
 - Jan Juc, Torquay, Bellbrae, Connewarre;
 - Anglesea to Eastern View;
 - Lorne, Deans Marsh, Bambra;
 - Moriac, Freshwater Creek, Winchelsea, Barrabool Hills
- Council Policy for Rabbit Management developed directly from the results of two rabbit management workshops hosted by Council with representatives from local Landcare groups, community groups, the Department of Economic Development, Jobs, Transport and Resources and the Corangamite Catchment Management Authority.
- Indigenous Planting Guides (Rural and Urban Coastal) for advice on what to plant.

Council will be discussing this Control Plan as part of its regular pest plant and animal program discussions with key community groups. Council is also developing its new Pest Plant and Animal Action Plan/Strategy in 2017/18. This Plan/Strategy will contain Council's priorities for pest plant and animal management on Council owned and managed land, including municipal roadsides.

Stakeholder Consultation

List key stakeholders who have been consulted in the development of this plan.

- Ryan Cooke, Biosecurity Manager Plants, Chemicals & Invasive Species, Department of Economic Development, Jobs, Transport and Resources (DEDJTR)
- The Control Plan was emailed in November for comment/information, to representatives from the following key community groups in the Shire actively engaged in pest plant and animal management work:
 - Upper Barwon Landcare Network;
 - Surf Coast & Inland Plains Network (SCIPN);
 - Surf Coast Rabbit Action Network (SCRAN)
 - Geelong Landcare Network; and
 - Barrabool Hills Landcare.

Relevant Local, Regional Policies and Strategies and submissions

Policies and strategies relevant to this Control Plan include:

State

- Invasive Plants and Animal Policy Framework

Regional

- Corangamite Invasive Plant and Animal Management Strategy

Local

- Surf Coast Shire Council Plan 2017- 2021: Environmental Leadership – Preserve and enhance the natural environment – effectively manage pest plants and animals on Council land
- Surf Coast Shire Environmental Management Strategy 2006: Issue 4 Pest Plants and Animals
- Surf Coast Shire Pest Plant and Animal Action Plan 2002
- Surf Coast Shire Code of Environmental Practice for Works on Rural Roadsides and Other Council Controlled Land 2003
- Surf Coast Shire Rural Roadside Management Prescriptions for High and Medium Conservation 2004
- Rural Roadside Management Strategy 2003

Objectives of the Plan

This Plan documents the agreed and approved State Government priorities for roadside weed and rabbit control priorities on municipal roadsides in Surf Coast Shire for 2017 - 2019 and the high level priorities for Council roadside weed and pest management.

The aim of the Control Plan is to document priority control activities agreed with the State Government and proposed by Council for 2017 – 2019 for the management of Regionally Controlled weeds and

established pest animals on municipal rural roadsides in Surf Coast Shire.

Council's objectives for this Control Plan are to ensure that:

- Council's management of pest plants and animals on rural roadsides reflects best practices and is effective and proactive, to the extent possible given available State Government and Council funding;
- State Government funding is allocated to the agreed DEDJTR weed and established pest animal priorities outlined in this Control Plan;
- Council continues to support and partner with community groups on pest plant and animal management, especially those groups that:
 - Have a high level of community participation/good history of community involvement;
 - Use best management practices; and
 - Are committed to a longer term investment in pest plant and animal management.
- Previous investment in management of Regionally Controlled pest plant and animals is continued where possible; and
- High conservation roadsides are protected from Regionally Controlled and new and emerging weeds.

State Government/DEDJTR Approved Work

The State Government has allocated Council \$23,487 annually for 2017 – 2019 for the following DEDJTR approved work:

2017/2018

- Serrated tussock containment line stretching from Winchelsea through to Bellbrae (\$13,000 approximately);
- Rabbit control at Thompson/Freshwater Creek to support previous investment/ratepayer requests (\$7,487 approximately)
- Gorse and Blackberry at Deans Marsh (\$2,000 approximately)
- Cape Tulip (one-leaf) at Winchelsea/Buckley to support Council's Cape Tulip community control program (\$1,000 approximately)

2018/2019

- Serrated tussock containment line stretching from Winchelsea through to Bellbrae (\$13,000 approximately);
- Rabbit control at Thompson/Freshwater Creek to support previous investment/ratepayer requests (\$7,487 approximately)
- Gorse at Deans Marsh (\$2,000 approximately)
- Cape Tulip (one-leaf) at Winchelsea/Buckley to support Council's Cape Tulip community control program (\$1,000 approximately)

Council Strategic Priorities

Available Council funds for pest plant and animal management on municipal roadsides in Surf Coast Shire will be directed in 2017 – 2019 to the following strategic priorities:

- Building on previous investment to maintain current condition (including rabbit management work in Thompson/Freshwater Creek area);
- New and emerging weeds on roadsides such as African Weed-Orchid, Cape Tulip, including Weeds of National Significance (WoNS) with a current focus on Chilean Needle Grass, Texas Needle Grass;
- High conservation roadsides and priority roadsides on township fringes – weed management,

- primarily Regionally Controlled weeds;
- Rural roadsides – support primary producers by preventing weed spread onto their properties;
- Preventing weed spread by contractor grass slashing equipment during the annual grass slashing program;
- Rabbit management with community groups where the groups:
 - Have a high level of community participation/good history of community involvement;
 - Use best management practices; and
 - Are committed to a longer term investment in pest plant and animal management;
- Ongoing community group capacity building and support, especially for those groups that meet the three criteria listed above.

Greater detail regarding Council priorities for pest plant and animal management on Council owned and managed land, including municipal roadsides, will be contained in Council's new Pest Plant and Animal Action Plan/Strategy which is currently being developed.

Term of the Control Plan

The Control Plan will run for a two year period from 1 July 2017 (date of commencement) to 30 June 2019.

Funding

State Government/DEDJTR Approved Work

The State Government has allocated Council \$23,487 annually for 2017 – 2019 for the following DEDJTR approved work:

2017/2018

- Serrated tussock containment line stretching from Winchelsea through to Bellbrae (\$13,000 approximately);
- Rabbit control at Thompson/Freshwater Creek to support previous investment/ratepayer requests (\$7,487 approximately)
- Gorse and Blackberry at Deans Marsh (\$2,000 approximately)
- Cape Tulip (one-leaf) at Winchelsea/Buckley to support Council's Cape Tulip community control program (\$1,000 approximately)

2018/2019

- Serrated tussock containment line stretching from Winchelsea through to Bellbrae (\$13,000 approximately);
- Rabbit control at Thompson/Freshwater Creek to support previous investment/ratepayer requests (\$7,487 approximately)
- Gorse and Blackberry at Deans Marsh (\$2,000 approximately)
- Cape Tulip (one-leaf) at Winchelsea/Buckley to support Council's Cape Tulip community control program (\$1,000 approximately)

Control Plan 2017 - 2019

Table 1: Target Species

Common Name	Scientific Name	CaLP classification	PRIORITY RATING (1 highest – 4 lowest)	Reasons for Management
Serrated Tussock	<i>Nassella trichotoma</i>	Regionally Controlled Weed	1	To maintain the section of the Serrated Tussock containment line within the Shire, stretching from north of Winchelsea through to the coast at Bellbrae
Rabbit	<i>Oryctolagus cuniculus</i>	Established Pest Animal	1	To continue support to the landholders in Thompson/Freshwater Creek area (previous DEDJTR rabbit compliance area)
Gorse	<i>Rosa rubiginosa</i>	Regionally Controlled Weed	1	To continue supporting DEDJTR compliance work and also previous investment by Council in Deans Marsh
Blackberry	<i>Rubus fruticosus (agg.)</i>	Regionally Controlled Weed	1	To continue support to the local landholders and also previous investment by Council in Deans Marsh and surrounds
Cape Tulip	<i>Moraea flaccida</i>	Regionally Controlled Weed	1	To support Council's annual community Cape Tulip control program in the Winchelsea/Buckley area

Control Plan 2017 - 2019

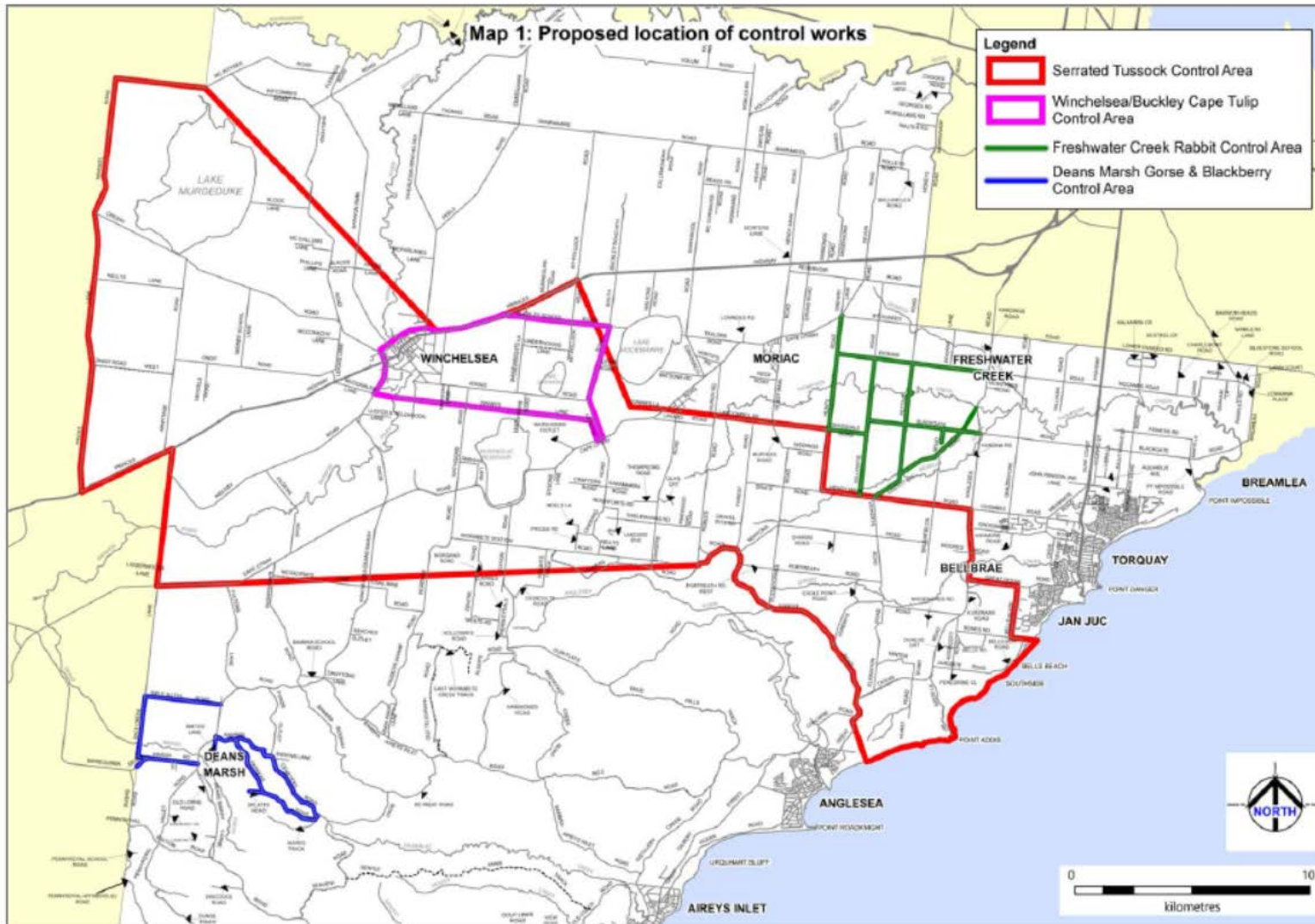
Table 2: Control Measures and Target Roadsides (this table can be used as part of Council's yearly or acquittal report to LGV)

Common Name	Control Measures	Location of where works will be done	Estimate of length of roadside to be treated annually over 2 years	Approximate Annual Timing of Treatment	Estimated Cost
Serrated Tussock	Spot spray application of a registered herbicide in accordance with the product label.	Serrated Tussock containment line (Winchelsea to Bellbrae)	430km (approx.)	April-September	\$13,000
Rabbit	<ul style="list-style-type: none"> - Warren and/or harbour removal (where possible) on roadsides to support adjacent landholders who are actively participating in warren/harbour removal in the vicinity of Loutitt Bay/Woodland & Blackgate Roads, Pettavel Road and Dickins Roads - Fumigation of warrens where warren destruction is not possible. 	Thompson/Freshwater Creek priority area	63km	February-November	\$ 7,487
Gorse and Blackberry	Spot spray application of a registered herbicide in accordance with the product label	Deans Marsh	35km	November - March	\$ 2,000
Cape Tulip	Spot spray application of a registered herbicide in accordance with the product label	Winchelsea/Buckley,	114km	September - October	\$ 1,000

Control Plan 2017 - 2019

Maps

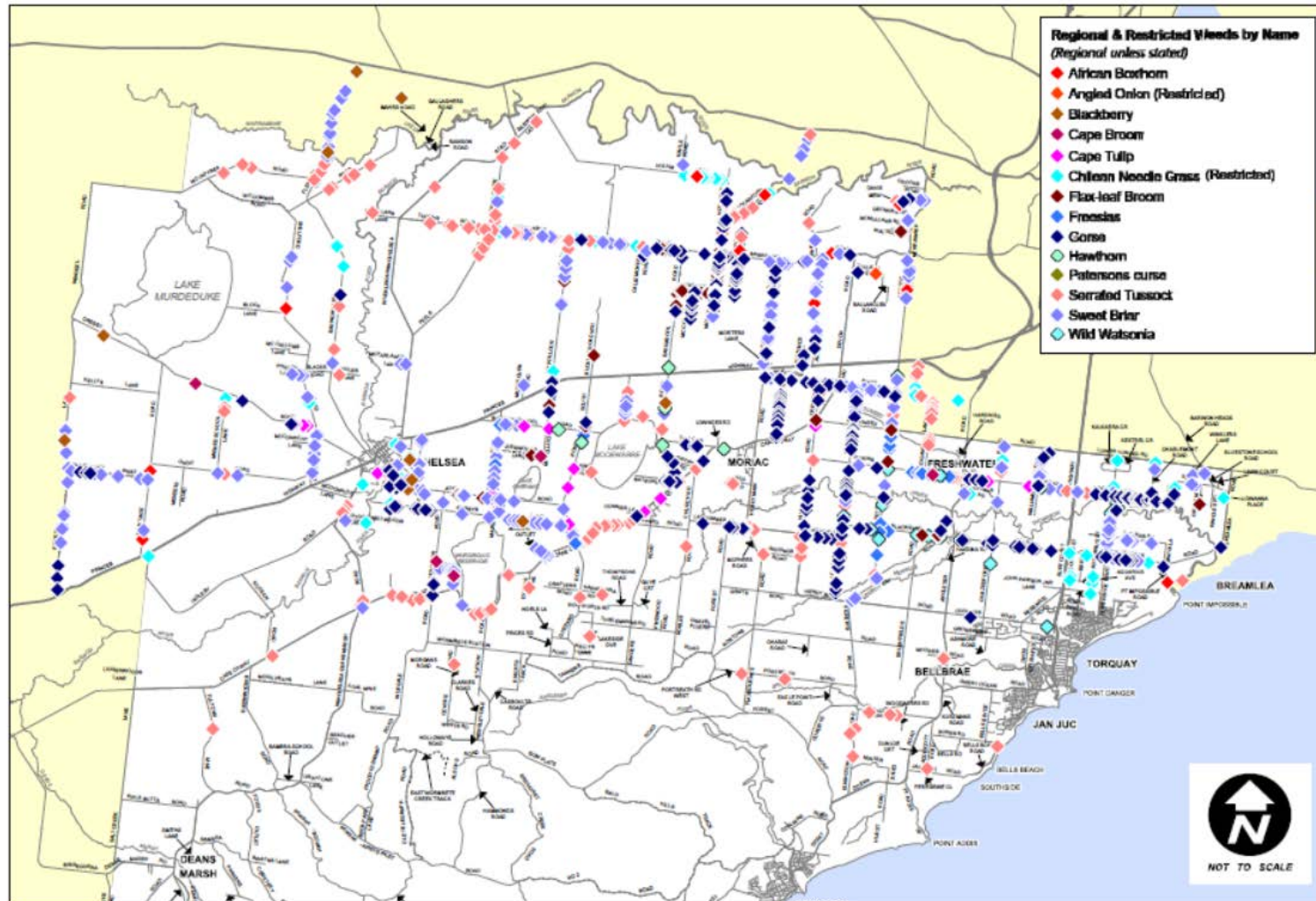
Map 1 Proposed location of control works.



Control Plan 2017 - 2019

Map 2 Known infestations of Regionally Prohibited Weeds, Regionally Controlled Weeds and Established Pest Animals and Restricted Weeds.

Map 2: Known infestations of Regionally Controlled Weeds and Restricted Weeds



Statement of Responsibilities

Council will:

- Publish this approved plan (or approved variation to this plan if relevant) on its website within 28 days of approval and ensure copies are available for public inspection at Council's office/s.
- Coordinate the implementation of this plan on Council managed roadsides in accordance with the investment principles stated in this plan and the control measures specified in Table 2.
- Implement best practice weed hygiene principles and protocols.
- Maintain accurate records sufficient to provide evidence that the plan has been carried out and provide these to Local Government Victoria on request.
- Obtain approval from DEDJTR before substantially modifying or varying the plan.
- Carefully consider any proposals from DEDJTR to modify or vary the plan in response to changed circumstances.

Provide a completion report to Local Government Victoria within 30 days from expiry of this plan outlining the outcomes of the control measures undertaken.

DEDJTR Endorsement

I declare that I am an authorised representative and that this plan has been reviewed and aligns with eligible activities.

**DEDJTR Regional Manager - Plants, Chemicals
& Invasive Species**

Name:

Signature:

Date:

Declaration

I declare that I am an authorised representative and the information given on this form is complete and correct

Key Contact Name: Kate Smallwood

Date:

Signature:

Council CEO Name: Keith Baillie, signed on behalf
of Surf Coast Shire Council under delegation

Signature:

Date: