

Climate Emergency 2023-2025 Action Plan

Progress Report
October 2023 – April 2024

Council's Climate Emergency Response Plan 2021-2031 sets out our commitments to climate action over ten years. This Plan aligns with and delivers on Council's climate emergency declaration, Surf Coast Shire's 10-year community vision, the Council Plan 2021-2025 and legislated obligations. Our climate emergency response areas are:

Mitigation

Actions to reduce our greenhouse gas emissions to limit future impact

Adaptation

Actions to reduce our vulnerability and build resilience to the unavoidable climate impacts

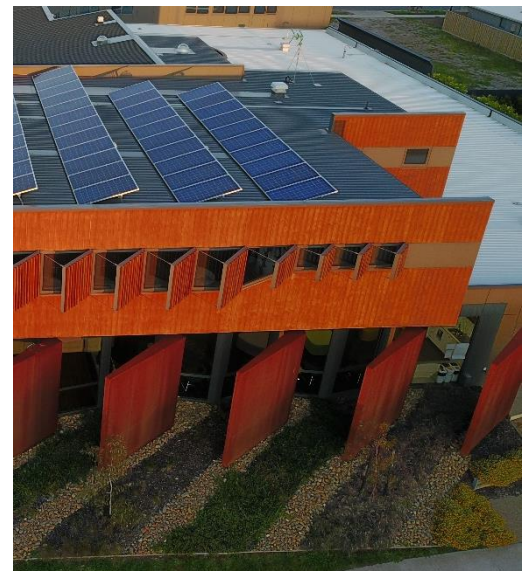
Mobilisation

Empowering our staff and community to act

Accompanying our Climate Emergency Response Plan 2021-2031 is an Action Plan, updated every two years, which outlines exactly what we will do to tackle climate change across the organisation and in the community. Our current Climate Emergency 2023-2025 Action Plan includes 26 actions across mitigation, adaptation and mobilisation. **This report outlines our progress between October 2023 and April 2024.**

Mitigation Highlights

- Progressing the Destination Charging Across Victoria program to install four 50kW EV chargers in Lorne, Aireys Inlet, Anglesea and Winchelsea. Funding was provided by the Victorian Government, with the units expected to be installed by the end of 2024.
- Developing a Draft Circular Economy Action Plan 2024-2027 to support Council and the community to avoid waste and keep valuable resources in use for as long as possible.
- Continuing to transition Council's fleet to electric by securing another electric vehicle for our Maternal and Child Health Nurse team.
- Reviewing and updating the Sustainable Council Facilities Policy, which is fundamental to driving emissions reduction and resilience in Council's infrastructure.



Adaptation Highlights

- Establishing a Climate Resilience Steering Committee with the Executive Management Team. Meetings are held every six weeks to report on and drive climate resilience across the organisation.
- Establishing a Climate Risk and Resilience Internal Working Group with staff from across the organisation. Meetings are held every six weeks to discuss and share progress, approaches and latest developments.
- Completing detailed planning and scoping to undertake Phase 1 and 2 of our climate risk assessments.
- Working with the Barwon South West Climate Alliance on climate risk assessments across the region. This will support our risk assessment process, particularly for assets.
- Completing an internal audit of Council's Climate Adaptation Response. A preliminary report indicated Council generally had a proactive response to both climate change mitigation and adaptation, and that Council could further mature its response by embedding climate considerations into all critical decision making frameworks.
- Progressing the Winchelsea Greening and Stormwater Upgrade, and Jan Juc Creek Daylighting Stage 2 Integrated Water Management projects with designs complete.
- Progressing the Painkalac Creek Flood Study with the technical specification complete.



Bellbrae Primary School



One Planet Fest - Ferne Millen Photography

Mobilisation Highlights

- Partnering with Geelong Sustainability to deliver the All Electric Homes Program (over 200 people attended Surf Coast events and 186 people submitted EOIs to take household action) and the 2023 Sustainable House Day (1,589 people attended open houses, webinars and seminars across Geelong and the Surf Coast).
- Supporting community climate action through the Climate Emergency Grants. 2023 recipients completed their projects – One Planet Festival run by Parents for Climate and Surfers for Climate; installation of solar and battery at the Community Garden 3231; and development of a School Sustainability Framework at Bellbrae Primary School.
- Continuing to participate in the development of the state-wide Victorian Climate Resilient Councils program, which will facilitate a strengthened and consistent approach to climate adaptation for Victorian Councils.