



for urban

coastal

areas

within the

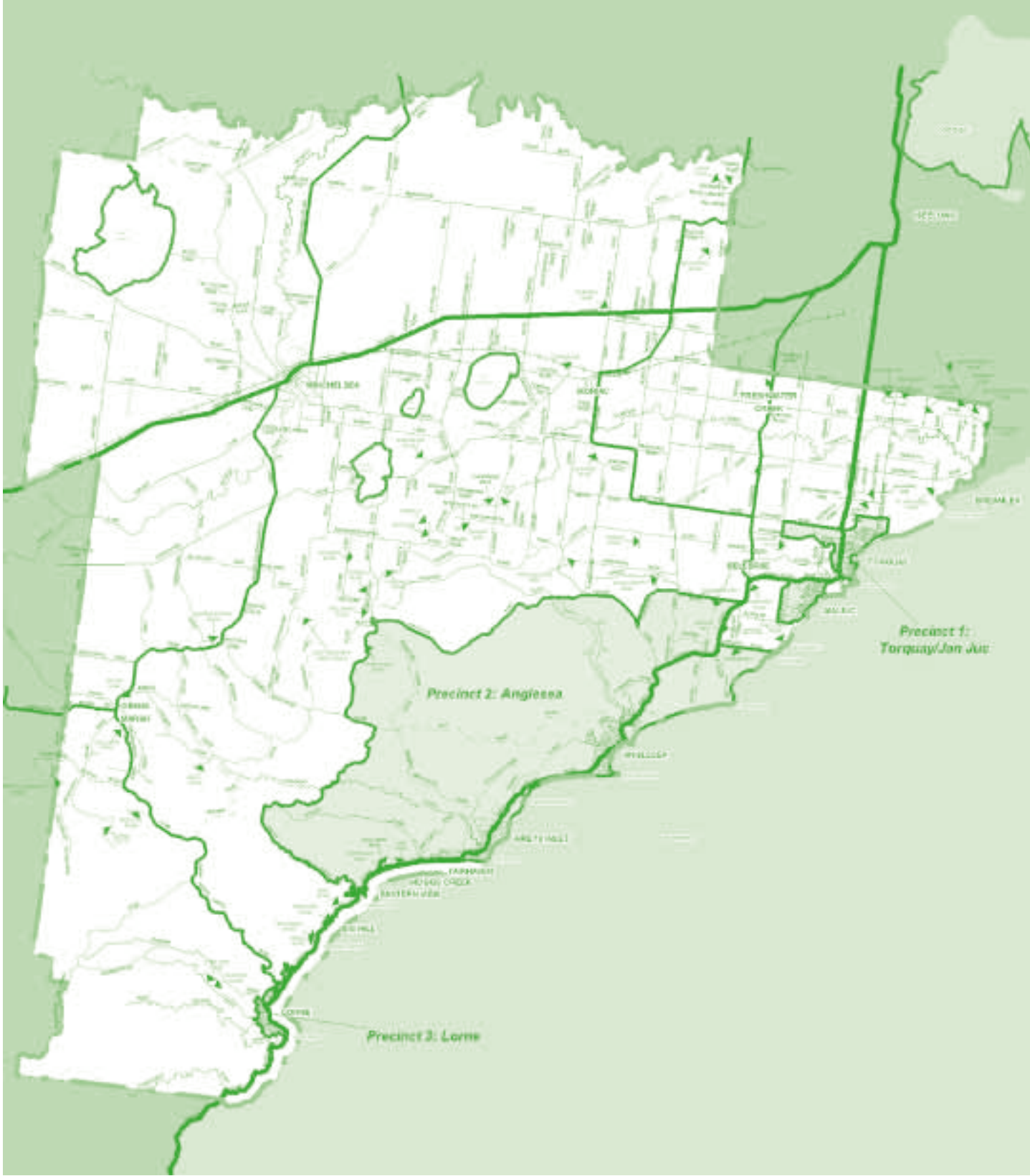
Surf Coast

Shire

# indigenous planting guide

JULY 2003





# using this planting guide



The aim of this planting guide is to describe a variety of indigenous plants that are suitable for use in local urban landscapes.

The guide presents three 'precincts' – Torquay/Jan Juc; Anglesea District; and Lorne.

Each precinct has an accompanying map which defines the boundary of that precinct. Planting lists for areas outside the defined urban precincts are contained in the accompanying publication "Indigenous Planting Guide for Rural Areas Within the Surf Coast Shire". Plant lists for a selection of Council reserves and estates are also included (see Appendices A-C).

Additional reserve lists are available from the Surf Coast Shire. Plants suitable for use near drains and sewers are listed in Appendix D.

Each precinct is broken into tall trees, trees, tall shrubs, medium shrubs, low plants, groundcovers, grasses, sedges, lilies and grasstrees, and climbers. Plants are assigned to categories based on the average height of the plant at maturity, as the mature size of a plant can vary greatly according to site specific conditions. A description of site requirements, height/width and general comments is included for each plant.

Although a broad description of environmental conditions for each plant has been described, local variations in soil type, slope, aspect, moisture, sunlight and water availability do occur.

As some plants are suited to particular site requirements, it is advisable to contact your local nursery for more information and to get advice on choosing plants which will grow well at your home. Always consider block size when choosing plants as some (such as tall gums) may be unsuitable. Availability of stock can be seasonal and varies between nurseries. To ensure plants you desire are available, plan ahead and place an order with a nursery which is able to supply plants to meet your needs. Many of the plants listed are difficult to propagate and may not be stocked regularly.

Do not be tempted to buy the named plants outside the area as they may be different genetic stock and cause problems with pollination.

It is important to note that seeds can only be collected by permit holders and all indigenous plants are protected, which means that it is unlawful to remove, lop or destroy them.

## Some Useful Definitions

**Endemic** Plants only found in a particular area.

**Indigenous** Plants which are native to and evolved in a particular area.

**Native** Plants native to and which have evolved in a particular country eg Australia.

**Naturalised** Introduced plants that have spread beyond the possibility of eradication.

**Environmental Weeds** Plants which aggressively invade natural bushland and displace native flora and fauna. They may be exotic or ecologically out of balance indigenous species.

**Exotic** Species which have been introduced from overseas.

## Why Using Indigenous Plants is Beneficial

Using indigenous plants in landscaping and revegetation is beneficial because they:

- maintain the unique local visual character of the area
- preserve the biodiversity of the region for future generations
- help the movement of pollinators between remnants of bush vegetation
- extend the beauty of the local surroundings and reserves into home gardens
- are adapted to low nutrient soils and do not need fertilising
- do not become environmental weeds
- have minimal water requirements as they are adapted to the local soil conditions
- support local fauna by providing food and habitat for local wildlife, including birds, small mammals, reptiles and amphibians
- are disease resistant
- are more adapted to fire than non-indigenous species



Button Everlasting



# landscape guide

A guide to preparing a landscape plan in the Surf Coast Shire

4

## The Purpose of this note

This note aims to assist anyone preparing a landscape plan to help create a plan that will achieve the best possible outcome and that will be of an acceptable standard for approval by the Shire.

## The Planning Context

The Surf Coast Shire has some of the most attractive coastline in Australia that is complemented by untouched heathlands, substantial areas of native forests and bushland, open rolling landscapes and significant waterways and wetlands. In the townships of the Shire, this natural landscape merges with the built environment to create the special character witnessed in towns like Anglesea, Aireys Inlet and Lorne and enjoyed by residents and visitors alike.

The landscape interacts with the built environment in many ways by providing a setting, shade and privacy and can also be used to create a view. The landscape supports local fauna by providing food and habitat for birds, mammals and reptiles. The landscape also plays an important role in other natural processes such as soil stability and water quality. The

invasion of environmental weeds threatens the natural landscape and native flora and fauna.

In recognition of the importance of the landscape the Surf Coast Planning Scheme provides for the protection of native vegetation through various controls including significant landscape, vegetation protection and environmental significance overlays. A number of planning policies are applicable to certain developments, including the Coastal Development Policy (Clause 22.01) and Streetscape and Landscape Policy (Clause 22.05).

The Streetscape and Landscape Policy provides that a landscape plan must accompany the following types of application:

- Commercial and industrial development
- Proposals involving the development of new public roads
- Use and development of land for more than one dwelling
- Development of land in the Environmental Rural Zone and in Schedules 1 and 2 to the Significant Landscape Overlay (excluding minor buildings and works associated with an existing building)
- Native vegetation removal

## Achieving a Net Gain

It is State Policy, supported by the Surf Coast Shire, to assist the protection and conservation of biodiversity, including native vegetation retention and provision of habitats for native plants and animals, to achieve a 'net gain' in vegetation cover across the State.

Put simply this means ensuring that more vegetation is put back than is removed, by minimising removal and replacing with indigenous vegetation where removal is necessary. It also refers to the quality of the vegetation, by way of its diversity and structure.

On your site you should consider how you will achieve a

net gain. Can buildings be sited to retain significant vegetation? Has land been set aside to replant vegetation? Is there a weed problem that can be rectified?

## What is indigenous vegetation?

'Indigenous' vegetation is those species that occurred naturally within an area before European Settlement. However indigenous plants are not just the same species as those occurring naturally but the same genetic stock also. To replant indigenous you must use plants grown from seed collected in the local area. Local indigenous nurseries are collecting and propagating local seed.



Many Flowered Mat-rush



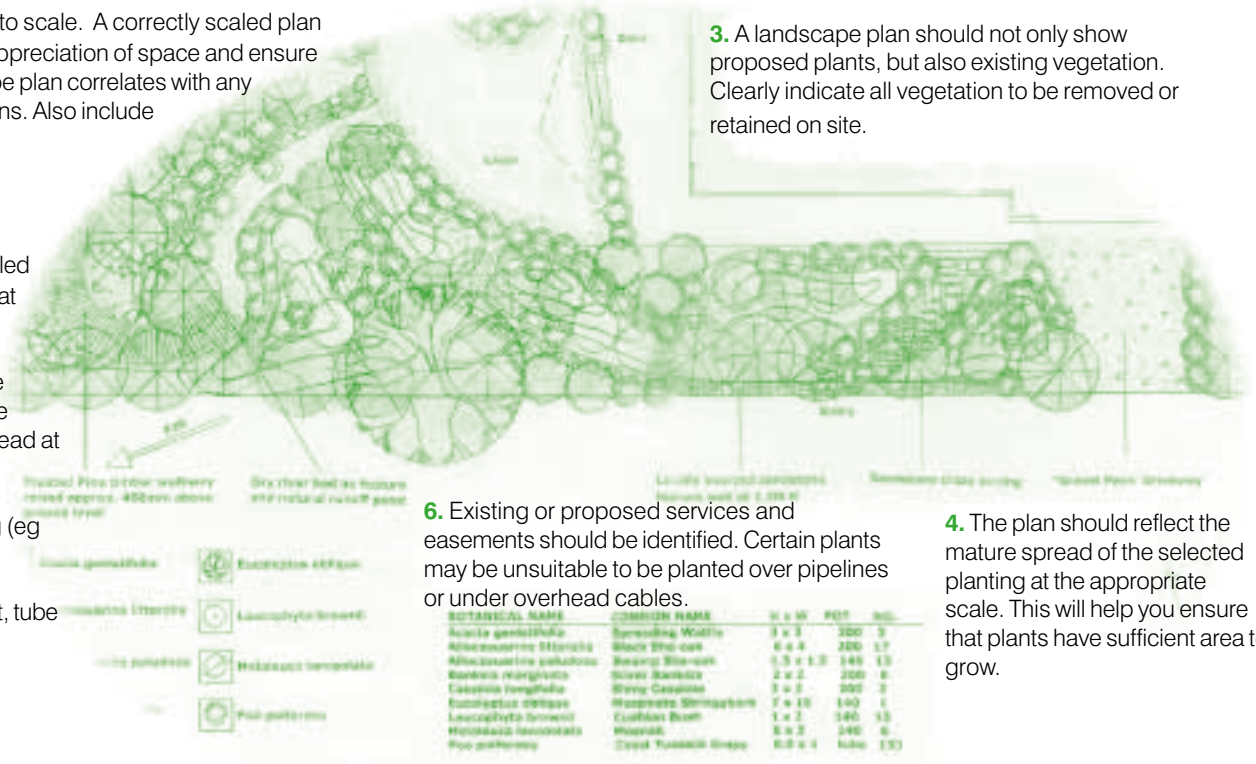
# what should a landscape plan show?



**1.** Draw the plan to scale. A correctly scaled plan will allow a true appreciation of space and ensure that the landscape plan correlates with any development plans. Also include a north point.

**2.** Include a detailed plant schedule that should show:

- Key/legend
- Botanical name
- Common name
- Height and spread at maturity
- Quantity
- Size at planting (eg container size, advanced tree to nominated height, tube stock)



**3.** A landscape plan should not only show proposed plants, but also existing vegetation. Clearly indicate all vegetation to be removed or retained on site.

**6.** Existing or proposed services and easements should be identified. Certain plants may be unsuitable to be planted over pipelines or under overhead cables.

**4.** The plan should reflect the mature spread of the selected planting at the appropriate scale. This will help you ensure that plants have sufficient area to grow.

**5.** Show the building footprint, including setbacks from boundaries, and areas of hard surface including driveways, paths and paving.

## Other Things to Consider

- A landscape theme and plan should be prepared in conjunction with the building design process, not as an afterthought. This approach recognises that buildings sit within the context of the site and surrounding area and are not isolated from external influences.
- Use existing vegetation as an asset. A tall tree can become a focal point for a view; shrubs can create seclusion. Retaining

- vegetation will also save you from buying plants later.
- Use plant species that are consistent with the existing or expected natural landscape character of the site and surrounding area. The Coastal Development Policy includes a vegetation character description for the coastal townships.
- The availability of indigenous plants may be seasonal or require seed collection to fill orders. So plan ahead and factor this in when planning the timing of the project.

- Don't plant environmental weeds. A number of exotic plants and even native plants from outside the local area have established in the Surf Coast and are out-competing the indigenous vegetation. For more information see "Environmental Weeds – Invaders of our Surf Coast", available from the Surf Coast Shire. Note that other plants are potential weeds so it is always best to plant indigenous.
- Give consideration to the

- location and placement of windows and doors. There is no point planting species that will grow up to block windows and doors.
- Avoid planting species that will overshadow north facing windows during the cooler months, but use plants that will provide shade during the summer months, particularly from the west.
- The Shire discourages the use of Redgum mulch and Jarrah timber edging in landscaping. These species are being rapidly

depleted from their natural environments and suitable alternatives are available.

- Use a diversity of plantings – groundcovers, shrubs and trees.
- Vegetation extends below the ground not just above. Think about the root system, tree roots are concentrated in the top 1.5m of soil and within the drip line of the tree canopy. As well as building works impacting on vegetation, tree roots can effect foundations, particularly concrete slabs.
- Where buildings, works or hard surfaces are proposed within the canopy or root zone of existing trees, include a report by a suitably qualified arborist confirming that the location and design of any proposed buildings, works or hard surfaces will not compromise the long term viability of such trees or that the trees will not reduce the structural integrity of buildings. Also consider using stumps in construction.
- Decks and soft paving (gravel, grasscrete, etc) may be preferable to hard paving and concrete for recreation areas, driveways and paths. They tend to require less soil disturbance and allow greater water permeation.

## Need More Help?

It is recommended that a qualified landscape architect or designer with experience or knowledge of the Surf Coast prepare or assist in the development of the landscape proposal. You should also seek the advice of local nurseries on suitable plant species. A list of indigenous nurseries is available from the Surf Coast Shire.

Landscape architects can be located through the Australian Institute of Landscape Architects on tin internet at [www.aila.org.au](http://www.aila.org.au)  
Planning and Environment Unit  
Grossmans Road,  
Torquay 3228  
Ph: 5261 0600





*Creamy Candles*





# precinct 1 torquay / jan juc



9

Prior to European settlement, the main residential area of Torquay was open grassy woodland, comprising Coastal Manna Gums, Drooping Sheoke and Black Wattle, with Grass Trees, Common Heath, and Kangaroo, Wallaby and Spear Grasses making up the ground layer. The occasional Golden Wattle and Sweet Bursaria contributed to the sparse shrub layer.

Today, isolated communities of Yellow Gum Woodland are unique to this precinct and are classified as being of State significance. Pockets of Ironbark Woodland can be found in gullies west towards

Jan Juc. The more common Heathy Woodland vegetation, such as that found in the north west of the precinct, consists of Messmate and Brown Stringybark with a shrub layer of Silver Banksia, Sweet Wattle, Common Flat-pea, Common Heath, Honey-pots, Prickly Tea-tree, Common Beard Heath and Myrtle Wattle. The ground layer comprises a diversity of sedges, rushes, grasses and wildflowers.

The narrow coastal strip supports segments of remnant native vegetation known as "coastal headland scrub" and "coastal dune mosaic", which is relatively treeless with a dense

or patchy shrub layer of Moonah, Wirilda, Silver Banksia, Prickly Tea-tree and Dusty Miller. Groundcovers include native grasses, Honey-pots, Cranberry Heath, Common Correa, Common Heath and Rough Guinea Flower.

Roadsides, creeks and coastal reserves also support significant remnant native vegetation communities. These remnants are important as they provide habitat and food for local fauna such as birds, small mammals and reptiles.



*Drooping Sheoak*

# precinct 1

## torquay / jan juc

1 0

### Tall Trees

**BOTANICAL NAME** Eucalyptus aromaphloia  
**COMMON NAME** Scentbark  
**ENVIRONMENTAL CONDITIONS** Moist loams, tolerating wet periods but not inundation.  
**HEIGHT/SPREAD** 12-20m/7-15m  
**COMMENTS** Large shade tree. Bark aromatic when crushed.

**BOTANICAL NAME** Eucalyptus baxteri  
**COMMON NAME** Brown Stringybark  
**ENVIRONMENTAL CONDITIONS** Well drained damp soil.  
**HEIGHT/SPREAD** 15-40m/4-20m  
**COMMENTS** Good shade and shelter tree.

**BOTANICAL NAME** Eucalyptus obliqua  
**COMMON NAME** Stringybark  
**ENVIRONMENTAL CONDITIONS** Moist well drained soil, tolerating short dry periods.  
**HEIGHT/SPREAD** 5-30m/6-20m  
**COMMENTS** Excellent shade and shelter tree for larger areas.

**BOTANICAL NAME** Eucalyptus ovata  
**COMMON NAME** Swamp Gum  
**ENVIRONMENTAL CONDITIONS** Prefers moist soil, tolerates inundation during winter and dryness in summer.  
**HEIGHT/SPREAD** 6-20m/6-10m  
**COMMENTS** Fast growing densely crowned tree. Good for providing shade.

**BOTANICAL NAME** Eucalyptus tricarpa  
**COMMON NAME** Red Ironbark  
**ENVIRONMENTAL CONDITIONS** Poor shallow soil including clays and gravels.  
**HEIGHT/SPREAD** 10-30m/10-20m  
**COMMENTS** Attractive upright to spreading tree with rough dark bark.

**BOTANICAL NAME** Eucalyptus viminalis  
**COMMON NAME** Manna Gum  
**ENVIRONMENTAL CONDITIONS** Adaptable to a wide range of soil, but will grow better on deeper soil.  
**HEIGHT/SPREAD** 10-40m/8-15m  
**COMMENTS** Fast growing tree used as a food source by koalas.

**BOTANICAL NAME** Eucalyptus willisii  
**COMMON NAME** Shining Peppermint  
**ENVIRONMENTAL CONDITIONS** Prefers drier conditions.  
**HEIGHT/SPREAD** 2-10m/4m  
**COMMENTS** Small tree with fibrous bark on lower trunk. Masses of small cream flowers in Spring.

### Trees

**BOTANICAL NAME** Acacia implexa  
**COMMON NAME** Lightwood  
**ENVIRONMENTAL CONDITIONS** Variety of soils including poor gravels.  
**HEIGHT/SPREAD** 5-15m/4-7m  
**COMMENTS** Fast growing, upright small tree with open crown. Mid to dark green foliage. Flowers perfumed cream balls Dec-March.

**BOTANICAL NAME** Acacia mearnsii  
**COMMON NAME** Black Wattle  
**ENVIRONMENTAL CONDITIONS** Prefers well drained soil. Will grow under harsh conditions.  
**HEIGHT/SPREAD** 5-15m/6-10m  
**COMMENTS** Fast growing, short lived (15yrs) wattle with dark green feathery-like (bipinnate) foliage and strongly scented pale yellow flowers Sept-Dec.

**BOTANICAL NAME** Acacia melanoxylon  
**COMMON NAME** Blackwood  
**ENVIRONMENTAL CONDITIONS** Tolerates a wide range of soils, but prefers deep, moist soil.  
**HEIGHT/SPREAD** 6-30m/4-15m  
**COMMENTS** Long lived wattle suited to screening and wind breaks. Dense green foliage and pale creamy flowers July-Oct.

**BOTANICAL NAME** Acacia pycnantha  
**COMMON NAME** Golden Wattle  
**ENVIRONMENTAL CONDITIONS** Grows well on heavy and light soil, prefers well drained soil.  
**HEIGHT/SPREAD** 3-8m/2-5m  
**COMMENTS** Hardy, quick growing, large, leathery dark green leaves (phyllodes). Good for screening, windbreaks and erosion control. Large golden yellow flowers Jul-Oct

**BOTANICAL NAME** Acacia retinoides  
**COMMON NAME** Wirilda  
**ENVIRONMENTAL CONDITIONS** Adaptable to all soils and conditions including salt and moderate lime.  
**HEIGHT/SPREAD** 3-8m/3-5m  
**COMMENTS** Quick growing, can become profuse. Green slender foliage with pale yellow flowers spring - summer.

**BOTANICAL NAME** Allocasuarina verticillata  
**COMMON NAME** Drooping Sheoke  
**ENVIRONMENTAL CONDITIONS** Well drained soil.  
**HEIGHT/SPREAD** 4-10m/3-6m  
**COMMENTS** Hardy tree with drooping greyish-green branchlets. Good for wind break.

**BOTANICAL NAME** Eucalyptus leucoxydon ssp bellariensis  
**COMMON NAME** Bellarine Yellow Gum  
**ENVIRONMENTAL CONDITIONS** Well drained soil.  
**HEIGHT/SPREAD** 10-12m  
**COMMENTS** Small tree unique to Torquay/Jan Juc and the Bellarine Peninsula.



*Hop Goodenia*

# precinct 1 torquay / jan juc



1 1

## Tall Shrubs 2.5 - 6 metres

**BOTANICAL NAME** *Acacia paradoxa*  
**COMMON NAME** Hedge Wattle  
**ENVIRONMENTAL CONDITIONS**  
Adaptable to most soil.  
**HEIGHT/SPREAD** 2-4m/2-5m  
**COMMENTS** Fast growing dense and spreading shrub covered with thorns. Excellent small bird habitat. Golden yellow flowers in Spring.

**BOTANICAL NAME** *Acacia verniciflua*  
**COMMON NAME** Varnish Wattle  
**ENVIRONMENTAL CONDITIONS**  
Tolerates wet and dry soil.  
**HEIGHT/SPREAD** 2-4m/3-5m  
**COMMENTS** Quick growing light screening plant with profuse golden balls in spring.

**BOTANICAL NAME** *Acacia verticillata*  
**COMMON NAME** Prickly Moses  
**ENVIRONMENTAL CONDITIONS**  
Tolerates most conditions and withstands periods of waterlogging.  
**HEIGHT/SPREAD** 2-5m/3-5m  
**COMMENTS** Low shrub to open tree with prickly leaves. Excellent bird habitat. Bright yellow flowers June-Dec.

**BOTANICAL NAME** *Banksia marginata*  
**COMMON NAME** Silver Banksia  
**ENVIRONMENTAL CONDITIONS**  
Common on a wide variety of sites and soils, but prefers good drainage. Tolerates soils wet in winter and dry in summer.  
**HEIGHT/SPREAD** 2.5-6m/1-5m  
**COMMENTS** Low shrub in heathlands to small tree in open forests. Excellent screening plant. Stiff dark green leaves. Honey coloured flowers Oct-June. Attractive to birds.

**BOTANICAL NAME** *Bursaria spinosa*  
**COMMON NAME** Sweet Bursaria  
**ENVIRONMENTAL CONDITIONS** Prefers well drained soil.  
**HEIGHT/SPREAD** 2-6m/2-3m  
**COMMENTS** Prickly shrub with creamy fragrant flowers Dec-March. Important nectar source for birds and insects. Bundles of brown seed pods in autumn.

**BOTANICAL NAME** *Leptospermum continentale*  
**COMMON NAME** Prickly Tea-tree  
**ENVIRONMENTAL CONDITIONS**  
Adaptable, tolerates moisture.  
**HEIGHT/SPREAD** 2-4m/1-2m  
**COMMENTS** Hardy plant which is great for screening. Masses of white flowers Oct-March.

**BOTANICAL NAME** *Leptospermum scoparium*  
**COMMON NAME** Manuka  
**ENVIRONMENTAL CONDITIONS** Dry sites.  
**HEIGHT/SPREAD** To 5m tall  
**COMMENTS** Variable plant with dense dark green prickly foliage and white flowers.

**BOTANICAL NAME** *Leucopogon parviflorus*  
**COMMON NAME** Coast Beard Heath  
**ENVIRONMENTAL CONDITIONS** Well drained sandy soil.  
**HEIGHT/SPREAD** 2-4m/2-3m  
**COMMENTS** Shrub to small tree with masses of densely bearded white flowers July-Nov. Berries bird attracting. Slow growing.

**BOTANICAL NAME** *Melaleuca lanceolata*  
**COMMON NAME** Moonah  
**ENVIRONMENTAL CONDITIONS**  
Tolerates a wide range of soils, wet and dry, but prefers well drained soil.  
**HEIGHT/SPREAD** 2-5m/3-6m  
**COMMENTS** Hardy shrub to small tree which provides excellent shelter/screening. Cream flowers in cylindrical spikes Oct-Dec.

**BOTANICAL NAME** *Myoporum insulare*  
**COMMON NAME** Common Boobialla  
**ENVIRONMENTAL CONDITIONS** Highly adaptable plant, although prefers sun and well drained soil.  
**HEIGHT/SPREAD** 2-6m/3m  
**COMMENTS** Fire retardant. Large rounded shrub, dense foliage, smooth, thick dark green leaves, white flowers with purple spots in spring. Good screening and hedging plant, salt tolerant.

**BOTANICAL NAME** *Ozothamnus ferrugineus*  
**COMMON NAME** Tree Everlasting  
**ENVIRONMENTAL CONDITIONS** Prefers moist, well drained soil.  
**HEIGHT/SPREAD** 2-6m/1-3m  
**COMMENTS** Shrub to small tree. Narrow dark green leaves and white flower clusters Nov-Feb.



## Medium Shrubs 1 - 3 metres

**BOTANICAL NAME** *Acacia acinacea*  
**COMMON NAME** Gold-dust Wattle  
**ENVIRONMENTAL CONDITIONS**  
Adaptable to well drained soil.  
**HEIGHT/SPREAD** 0.5-2.5m/2-4m  
**COMMENTS** Hardy plant good for low screening, profuse bright yellow balls Aug-Nov.

**BOTANICAL NAME** *Acacia myrtifolia*  
**COMMON NAME** Myrtle Wattle  
**ENVIRONMENTAL CONDITIONS** Suits most soils.  
**HEIGHT/SPREAD** 1-3m/1-2m  
**COMMENTS** Fast growing ornamental bush with reddish stems, good for low screening. Profuse flowering in spring.

**BOTANICAL NAME** *Acacia suaveolens*  
**COMMON NAME** Sweet Wattle  
**ENVIRONMENTAL CONDITIONS** Well drained soil.  
**HEIGHT/SPREAD** 1-3m/2-5m  
**COMMENTS** Fast growing, ornamental low screen or windbreak. Bluish green narrow leaves. Perfumed cream flowers April-Oct.

**BOTANICAL NAME** *Alyxia buxifolia*  
**COMMON NAME** Sea Box  
**ENVIRONMENTAL CONDITIONS** Well drained soil.  
**HEIGHT/SPREAD** 1-2m/1-3m  
**COMMENTS** Dark green hard leaved low shrub. Produces white flowers and red fruit.

**BOTANICAL NAME** *Atriplex cinerea*  
**COMMON NAME** Coast Saltbush  
**ENVIRONMENTAL CONDITIONS** Well drained soil.  
**HEIGHT/SPREAD** 1-2m/2-3m  
**COMMENTS** Fast growing, dense spreading shrub. Silver/grey leaves. Good low screen.

# precinct 1

## torquay / jan juc

1 2

**BOTANICAL NAME** *Correa alba*  
**COMMON NAME** White Correa  
**ENVIRONMENTAL CONDITIONS** Well drained soil, tolerating moisture or extended dry periods.  
**HEIGHT/SPREAD** 0.5-2m/1-3m  
**COMMENTS** A useful plant for soil binding or as a low screen. Waxy star shaped flowers most of the year.

**BOTANICAL NAME** *Correa reflexa*  
**COMMON NAME** Common Correa  
**ENVIRONMENTAL CONDITIONS** Well drained soil.  
**HEIGHT/SPREAD** 0.3-2m/1-2m  
**COMMENTS** Medium sized shrub with light green or green/red bells March-Sept. Excellent plant for dry shady positions.

**BOTANICAL NAME** *Goodenia ovata*  
**COMMON NAME** Hop Goodenia  
**ENVIRONMENTAL CONDITIONS** Grows in any situation. Tolerates waterlogging.  
**HEIGHT/SPREAD** 1-2.5m/1-3m  
**COMMENTS** Green leaves, bright yellow flowers spring to summer.

**BOTANICAL NAME** *Hibbertia aspera*  
**COMMON NAME** Rough Guinea-flower  
**ENVIRONMENTAL CONDITIONS** Scattered occurrence over near coastal range, on rocky hillsides or sandy soils.  
**HEIGHT/SPREAD** 1-2.5m  
**COMMENTS** Bushy green shrub with yellow flowers Sept-Dec.

**BOTANICAL NAME** *Olearia axillaris*  
**COMMON NAME** Coast Daisy Bush  
**ENVIRONMENTAL CONDITIONS** Well drained dry sandy soil. Full sun.  
**HEIGHT/SPREAD** 1-2m/1-2m  
**COMMENTS** Attractive flowering plant with aromatic leaves and yellow daisy flowers Feb-April.

**BOTANICAL NAME** *Olearia glutinosa*  
**COMMON NAME** Sticky Daisy Bush  
**ENVIRONMENTAL CONDITIONS** Well drained, sandy soil.  
**HEIGHT/SPREAD** 2m/1.5m  
**COMMENTS** Ideal for coastal gardens, resistant to salt spray.

**BOTANICAL NAME** *Pomaderris ferruginea*  
**COMMON NAME** Rusty Pomaderris  
**ENVIRONMENTAL CONDITIONS** Well drained, dry soil.  
**HEIGHT/SPREAD** 1-2.5m high  
**COMMENTS** Hardy coastal plant with leaves dark green above and whitish beneath. Small cream flowers in spring

**BOTANICAL NAME** *Pomaderris paniculosa* ssp *paralia*  
**COMMON NAME** Coast Pomaderris  
**ENVIRONMENTAL CONDITIONS** Well drained, dry soil.  
**HEIGHT/SPREAD** 1-2.5m high  
**COMMENTS** Hardy coastal plant with leaves dark green above and whitish beneath. Small cream flowers in spring

**BOTANICAL NAME** *Pultenaea daphnoides*  
**COMMON NAME** Large leaf Bush-pea  
**ENVIRONMENTAL CONDITIONS** Well drained soil.  
**HEIGHT/SPREAD** 1-3m/0.5-2m  
**COMMENTS** Attractive shrub with large yellow and red pea flowers.

**BOTANICAL NAME** *Spyridium parvifolium*  
**COMMON NAME** Dusty Miller  
**ENVIRONMENTAL CONDITIONS** Well drained soil.  
**HEIGHT/SPREAD** 1-3m/1-2m  
**COMMENTS** Shrub good for providing screen in dry, shady areas. Small white flowers are surrounded by dusty-white floral leaves July-Nov.

### Low Plants to 1 metre high

**BOTANICAL NAME** *Allocasuarina misera*  
**COMMON NAME** Dwarf Sheoke  
**ENVIRONMENTAL CONDITIONS** Moist well drained sandy soil.  
**HEIGHT/SPREAD** 0.5-1m/1-2m  
**COMMENTS** Ornamental, slow growing shrub. Male plant has bronze flowers, female reddish purple flowers.

**BOTANICAL NAME** *Calytrix tetragona*  
**COMMON NAME** Fringe Myrtle  
**ENVIRONMENTAL CONDITIONS** Well drained soils, tolerating extended dry periods and occasional inundation.  
**HEIGHT/SPREAD** 1m/1-2m  
**COMMENTS** Fine green aromatic leaves. Very attractive dense heads of white and pink flowers Aug-Nov.

**BOTANICAL NAME** *Dillwynia cinerescens*  
**COMMON NAME** Grey Parrot Pea  
**ENVIRONMENTAL CONDITIONS** Prefers dry soils, although can tolerate a wide range of well drained soil types.  
**HEIGHT/SPREAD** 0.6-1m/0.5-1.5m  
**COMMENTS** Open, erect or spreading understorey shrub with clusters of yellow and orange pea flowers July-Nov.

**BOTANICAL NAME** *Dillwynia glaberrima*  
**COMMON NAME** Heath/Smooth Parrot Pea  
**ENVIRONMENTAL CONDITIONS** Can tolerate a wide range of well drained soil types.  
**HEIGHT/SPREAD** 1m/1-2m  
**COMMENTS** Bright yellow and red flowers Aug-Dec.

**BOTANICAL NAME** *Dillwynia sericea*  
**COMMON NAME** Showy Parrot Pea  
**ENVIRONMENTAL CONDITIONS** Very adaptable.  
**HEIGHT/SPREAD** 0.6-1m/0.5-1.5m  
**COMMENTS** Cylindrical leafy spikes of yellow and red, apricot, or orange flowers Aug-Dec. Useful as a low screen plant.

**BOTANICAL NAME** *Epacris impressa*  
**COMMON NAME** Common Heath  
**ENVIRONMENTAL CONDITIONS** Moist well drained soil, tolerating limited wet or dry periods once established.  
**HEIGHT/SPREAD** 0.5-1m/0.2-0.6m  
**COMMENTS** Floral emblem of Victoria. Open, wiry shrub with attractive pink or white flowers March-Nov. Good rockery plant, particularly when planted in groups.

**BOTANICAL NAME** *Gonocarpus tetragynus*  
**COMMON NAME** Common Raspwort  
**ENVIRONMENTAL CONDITIONS** Moist to dry well drained soil.  
**HEIGHT/SPREAD** 0.1-0.3m/0.2-0.4m  
**COMMENTS** Low bushy herb with loose spikes of tiny pinkish red flowers Dec-Feb.

**BOTANICAL NAME** *Helichrysum scorpioides*  
**COMMON NAME** Button Everlasting  
**ENVIRONMENTAL CONDITIONS** Well drained soil.  
**HEIGHT/SPREAD** 0.3m/0.2-0.3m  
**COMMENTS** Large yellow buttons spring-autumn. Attractive rockery plant which dies back after flowering.

**BOTANICAL NAME** *Hibbertia riparia*  
**COMMON NAME** Erect Guinea-flower  
**ENVIRONMENTAL CONDITIONS** Well drained moist soil.  
**HEIGHT/SPREAD** 0.3-1m/0.6  
**COMMENTS** Open erect shrub with yellow flowers spring and summer.



# precinct 1 torquay / jan juc



1 3

**BOTANICAL NAME** *Leptospermum myrsinoides*

**COMMON NAME** Heath (silky) Tea-tree

**ENVIRONMENTAL CONDITIONS**

Adaptable, prefers good drainage, but can tolerate poor drainage once established.

**HEIGHT/SPREAD** 0.5-1m/1m

**COMMENTS** Attractive shrub with white or pink flowers in spring and summer.

**BOTANICAL NAME** *Leucophyta brownii*

**COMMON NAME** Cushion Bush

**ENVIRONMENTAL CONDITIONS** Well drained dry conditions. Full sun.

**HEIGHT/SPREAD** 0.2-1m/0.5-2m

**COMMENTS** Attractive rounded silvery/grey shrub which withstands coastal spray and salt. Foliage reflects available light at night time, making it an ideal plant for defining pathways.

**BOTANICAL NAME** *Leucopogon virgatus*

**COMMON NAME** Common Beard Heath

**ENVIRONMENTAL CONDITIONS** Well drained soils, tolerating some dryness once established.

**HEIGHT/SPREAD** 0.3-1m/0.2-0.6

**COMMENTS** An excellent garden plant ideal for filling small gaps between shrubs.

**BOTANICAL NAME** *Olearia ramulosa*

**COMMON NAME** Twiggy Daisy Bush

**ENVIRONMENTAL CONDITIONS** Well drained soil.

**HEIGHT/SPREAD** 0.5-1m/1m

**COMMENTS** Attractive garden plant with white or mauve flowerheads Sept-May. Fast growing.

**BOTANICAL NAME** *Rhagodia candolleana*

**COMMON NAME** Seaberry Saltbush

**ENVIRONMENTAL CONDITIONS** Well drained soil.

**HEIGHT/SPREAD** 1m/1m

**COMMENTS** Semi-succulent scrambling shrub. Small white flowers Dec-apr. Small red berries autumn.

**BOTANICAL NAME** *Senecio quadridentatus*

**COMMON NAME** Cotton Fireweed

**ENVIRONMENTAL CONDITIONS** Very adaptable to most soils.

**HEIGHT/SPREAD** 0.4-1m/0.5-1m

**COMMENTS** Withstands very dry conditions. Greyish in appearance.

**BOTANICAL NAME** *Sphaerolobium vimineum*

**COMMON NAME** Leafless Globe-pea

**ENVIRONMENTAL CONDITIONS** Moist well drained soil.

**HEIGHT/SPREAD** 0.3-0.6m/0.3-0.6m

**COMMENTS** Attractive in a rockery or planted with other small shrubs. Small yellow pea flowers Sept- Jan.

**BOTANICAL NAME** *Tetratheca ciliata*

**COMMON NAME** Common Pink Bells

**ENVIRONMENTAL CONDITIONS** Well drained soil, responding to extra moisture in summer.

**HEIGHT/SPREAD** 0.3-0.5m/0.3-0.6m

**COMMENTS** Profuse fragrant pink or mauve flowers July-Dec.



## Groundcovers

**BOTANICAL NAME** *Acrotiche serrulata*

**COMMON NAME** Honey pots

**ENVIRONMENTAL CONDITIONS** Moist well drained soil tolerating dry periods.

**HEIGHT/SPREAD** 0.1-0.3m/0.5-1m

**COMMENTS** Slow growing, dense ground covering shrub. Translucent tubular flowers May-Oct with a honey fragrance.

**BOTANICAL NAME** *Astroloma humifusum*

**COMMON NAME** Cranberry Heath

**ENVIRONMENTAL CONDITIONS** Well drained soil tolerating dry periods once established.

**HEIGHT/SPREAD** 0.1-0.5m/1-1.5m

**COMMENTS** Dense spreading mat like plant with attractive small bright red tubular flowers most of the year. Excellent for rockeries, embankments, under shrubs or in hanging baskets.

**BOTANICAL NAME** *Atriplex semibaccata*

**COMMON NAME** Creeping/Berry Saltbush

**ENVIRONMENTAL CONDITIONS** Well drained soil, salt tolerant.

**HEIGHT/SPREAD** 0.1-0.3m/1-3m

**COMMENTS** Spreading prostrate shrub with grey-green leaves.

**BOTANICAL NAME** *Bossiaea prostrata*

**COMMON NAME** Creeping Bossiaea

**ENVIRONMENTAL CONDITIONS** Well drained soil. Suitable in sun or shade.

**HEIGHT/SPREAD** Prostrate/0.5-1.5m

**COMMENTS** Prostrate, lightly spreading, showy pea flowers in Spring.

**BOTANICAL NAME** *Carpobrotus rossii*

**COMMON NAME** Karkalla

**ENVIRONMENTAL CONDITIONS** Sandy soil. Full sun required for flowers.

**HEIGHT/SPREAD** Prostrate/2-3m

**COMMENTS** Prostrate succulent perennial herb with thick fleshy leaves and pale purple to pink flowers on short stalks. Good soil binding plant. Flowers most of the year.

**BOTANICAL NAME** *Chrysocephalum apiculatum*

**COMMON NAME** Common Everlasting

**ENVIRONMENTAL CONDITIONS**

Widespread and variable in a variety of habitats.

**HEIGHT/SPREAD** 0.3m/1-2m

**COMMENTS** Perennial of the daisy family. Silvery foliage and golden flower heads which occur most of the year. Excellent rockery plant.

**BOTANICAL NAME** *Dichondra repens*

**COMMON NAME** Kidney Weed

**ENVIRONMENTAL CONDITIONS** Moist well drained soil. Shade.

**HEIGHT/SPREAD** Prostrate, creeping.

**COMMENTS** Matting, prostrate herb. Lawn substitute. Kidney shaped leaves with tiny cream flowers Sept-Dec.

**BOTANICAL NAME** *Einadia nutans*

**COMMON NAME** Nodding Saltbush

**ENVIRONMENTAL CONDITIONS**

Tolerates dry soil.

**HEIGHT/SPREAD** 0.3m/1.2m

**COMMENTS** Fire retardant. Useful groundcover for banks and rockeries.

**BOTANICAL NAME** *Goodenia geniculata*

**COMMON NAME** Bent Goodenia

**ENVIRONMENTAL CONDITIONS** Moist soil.

**HEIGHT/SPREAD** 0.1-0.5m/0.1-0.5m

**COMMENTS** Perennial suckering matting herb. Long flowering. Yellow flowers. Excellent rockery plant.

# precinct 1

## torquay / jan juc

1 4

**BOTANICAL NAME** Kennedia prostrata  
**COMMON NAME** Running Postman  
**ENVIRONMENTAL CONDITIONS** Well drained soil.

**HEIGHT/SPREAD** Prostrate/1-2.5m  
**COMMENTS** Fast growing prostrate with very showy red pea flowers most of the year.

**BOTANICAL NAME** Platylobium obtusangulum  
**COMMON NAME** Common Flat-pea  
**ENVIRONMENTAL CONDITIONS** Prefers drier and well drained soil.

**HEIGHT/SPREAD** 0.3-0.5m/1m  
**COMMENTS** Triangular leaves and small attractive yellow and red pea flowers in spring.

**BOTANICAL NAME** Threlkeldia diffusa  
**COMMON NAME** Coast Bonefruit  
**ENVIRONMENTAL CONDITIONS** Moist saline soil.

**HEIGHT/SPREAD** Prostrate-0.3m/1m  
**COMMENTS** Spreading succulent perennial herb. Matting plant for coastal conditions.

**BOTANICAL NAME** Viola hederacea  
**COMMON NAME** Ivy-leaf Violet  
**ENVIRONMENTAL CONDITIONS** Moist to wet soil.

**HEIGHT/SPREAD** Prostrate, creeping.  
**COMMENTS** Fast growing herb which creates a dense mat with small white flowers most of the year.



Running Postman

### Grasses, Sedges, Lilies, Irises & Grasstrees

**BOTANICAL NAME** Arthropodium strictum

**COMMON NAME** Chocolate Lily  
**ENVIRONMENTAL CONDITIONS** Well drained soil.

**HEIGHT/SPREAD** 0.2-1m/0.2-0.8m  
**COMMENTS** Attractive and adaptable perennial. Chocolate scented violet coloured flowers.

**BOTANICAL NAME** Austroanthonia geniculata

**COMMON NAME** Kneed Wallaby Grass

**ENVIRONMENTAL CONDITIONS** Requires full sun or semi shaded positions with well drained soil.

**HEIGHT/SPREAD** 0.1-0.4m high  
**COMMENTS** Excellent contrast plant in landscaping.

**BOTANICAL NAME** Austroanthonia racemosa

**COMMON NAME** Stiped Wallaby Grass

**ENVIRONMENTAL CONDITIONS** Dry to moist well drained soils.

**HEIGHT/SPREAD** To 20cm high, stems 0.1-0.6m high.  
**COMMENTS** Variable perennial grass of slender tufts or dense tussocks ideal for a native lawn.

**BOTANICAL NAME** Austrostipa flavescens

**COMMON NAME** Spear Grass  
**ENVIRONMENTAL CONDITIONS** Suits most soil.

**HEIGHT/SPREAD** 0.3-0.8m/1.2m  
**COMMENTS** Densely tufting grass which provides a soft graceful form ideal for landscaping.

**BOTANICAL NAME** Austrostipa mollis  
**COMMON NAME** Supple Spear Grass  
**ENVIRONMENTAL CONDITIONS** Moist soils.

**HEIGHT/SPREAD** To 30cm high, stems to 1.5m high.  
**COMMENTS** Robust, erect tufted grass which adds an element of interest to the ground flora of gardens.

**BOTANICAL NAME** Carex appressa  
**COMMON NAME** Tall sedge

**ENVIRONMENTAL CONDITIONS** Requires ample moisture, tolerating periods of inundation.  
**HEIGHT/SPREAD** 0.5-1.2m/0.5-1m  
**COMMENTS** Suitable for wet areas, stabilising soil, or as an aquatic or bog garden plant.

**BOTANICAL NAME** Carex breviculmis  
**COMMON NAME** Common Grass-sedge

**ENVIRONMENTAL CONDITIONS** Very adaptable, from exposed slopes to moist depressions.  
**HEIGHT/SPREAD** To 15cm high.  
**COMMENTS** Small densely tufted sedge with triangular stems.

**BOTANICAL NAME** Dianella revoluta  
**COMMON NAME** Black-anther Flax-lily

**ENVIRONMENTAL CONDITIONS** Well drained soil. Tolerates dry soils in shade.

**HEIGHT/SPREAD** 0.3-1m/0.5-2.5m  
**COMMENTS** Perennial with dark green leaves and blue flowers on branched stems in spring/summer.

**BOTANICAL NAME** Gahnia sieberiana  
**COMMON NAME** Red-fruited Saw-sedge

**ENVIRONMENTAL CONDITIONS** Tolerates moist soil for most of the year.

**HEIGHT/SPREAD** 1.5-3m/2-3m  
**COMMENTS** Perennial sedge forming tussocks. Attractive strap like leaves and flower head. Important butterfly food source and habitat for small birds.

**BOTANICAL NAME** Isolepis nodosa  
**COMMON NAME** Knobby Club-rush

**ENVIRONMENTAL CONDITIONS** Moist soil, tolerates dry and wet conditions when established.  
**HEIGHT/SPREAD** 0.5-1.5m/0.6-2m  
**COMMENTS** Hardy plant providing interesting contrast in landscapes. Ideal for wet areas.

**BOTANICAL NAME** Lepidosperma species

**COMMON NAME** Sword/rapier-sedges  
**ENVIRONMENTAL CONDITIONS** Tolerates moist soil with full sun or dry soil in partial sun.  
**HEIGHT/SPREAD** 0.5-1.5m high  
**COMMENTS** Strappy leaves and attractive erect foliage and decorative flowers.

**BOTANICAL NAME** Lomandra longifolia

**COMMON NAME** Spiny-headed Mat-rush  
**ENVIRONMENTAL CONDITIONS** Well drained soil tolerating dry shade.

**HEIGHT/SPREAD** 0.5-1m/0.5-1.2m  
**COMMENTS** Hardy perennial, smooth bright green strappy leaves, scented yellowish flowers Sept-Dec.

**BOTANICAL NAME** Lomandra multiflora

**COMMON NAME** Many-flowered Mat-rush  
**ENVIRONMENTAL CONDITIONS** Well drained soil.

**HEIGHT/SPREAD** 0.2-0.5m/0.15-0.2m  
**COMMENTS** Stiff heathland plant with strap like leaves. Attractive purple/yellow flowers.

**BOTANICAL NAME** Microlaena stipoides

**COMMON NAME** Weeping grass  
**ENVIRONMENTAL CONDITIONS** Moist well drained soil.

**HEIGHT/SPREAD** 0.3m/0.6m  
**COMMENTS** Native grass with delicate arching form. Good for a lawn substitute in shady areas.

# precinct 1 torquay / jan juc



15

**BOTANICAL NAME** Patersonia fragilis  
**COMMON NAME** Short Purple flag

**ENVIRONMENTAL CONDITIONS**

Tolerates inundation for short periods.

**HEIGHT/SPREAD** 0.1-0.2m/0.4m

**COMMENTS** Attractive plant in rocky landscape. Purple flowers on short stems in spring/summer.

**BOTANICAL NAME** Patersonia occidentalis

**COMMON NAME** Long Purple-flag

**ENVIRONMENTAL CONDITIONS**

Tolerates inundation in winter and drying out in summer.

**HEIGHT/SPREAD** 0.2-0.4m/0.3-0.6m

**COMMENTS** Attractive plant suitable for bog gardens or pond edges but also tolerant of dry positions in late spring/summer.

**BOTANICAL NAME** Poa labillardierei

**COMMON NAME** Tussock Grass

**ENVIRONMENTAL CONDITIONS** Well drained soil.

**HEIGHT/SPREAD** 0.2-0.9/0.7-1m

**COMMENTS** Densely forming perennial tussock grasses with soft graceful form suiting many landscape styles.

**BOTANICAL NAME** Poa poiformis

**COMMON NAME** Tussock Grasses

**ENVIRONMENTAL CONDITIONS** Well drained sandy soil, tolerating saline soil and salt spray.

**HEIGHT/SPREAD** 0.2-0.9m/1m

**COMMENTS** Densely tufting grass with bluish leaves.

**BOTANICAL NAME** Themeda triandra

**COMMON NAME** Kangaroo Grass

**ENVIRONMENTAL CONDITIONS**

Adaptable to most soils which do not remain wet.

**HEIGHT/SPREAD** 0.4-0.9m/0.7m

**COMMENTS** Perennial tussock with attractive green/purple foliage and drooping "paw" like flower heads.

**BOTANICAL NAME** Xanthorrhoea australis

**COMMON NAME** Austral Grass-tree

**ENVIRONMENTAL CONDITIONS** Well drained soil, tolerating dry conditions once established.

**HEIGHT/SPREAD** 1-3m

**COMMENTS** Attractive slow growing perennial plant with thick woody trunk surrounded by grassy tuft of leaves. Usually flowers only after fire.

**BOTANICAL NAME** Xanthorrhoea minor

**COMMON NAME** Small Grass-tree

**ENVIRONMENTAL CONDITIONS** Well drained soil, tolerating dry conditions once established.

**HEIGHT/SPREAD** 0.6m/1m

**COMMENTS** Attractive slow growing perennial with a subterranean woody trunk. Cream flowers in spring.



*Small Grass Tree*

## Climbers & Scramblers

**BOTANICAL NAME** Billardiera scandens

**COMMON NAME** Climbing/Common Appleberry

**ENVIRONMENTAL CONDITIONS** Well drained dry to moist soil.

**HEIGHT/SPREAD** Climber

**COMMENTS** Soft climber with greenish-yellow tubular flowers throughout the year.

**BOTANICAL NAME** Clematis aristata

**COMMON NAME** Mountain Clematis

**ENVIRONMENTAL CONDITIONS** Moist soil with shade.

**HEIGHT/SPREAD** Climber

**COMMENTS** Vigorous climber, masses of creamy white starry flowers Aug-March.

**BOTANICAL NAME** Clematis microphylla

**COMMON NAME** Small-leaved Clematis

**ENVIRONMENTAL CONDITIONS** Well

drained soil.

**HEIGHT/SPREAD** Climber

**COMMENTS** Climber with dull green leaves and masses of creamy starry flowers July-Nov.

**BOTANICAL NAME** Glycine clandestina

**COMMON NAME** Twining Glycine

**ENVIRONMENTAL CONDITIONS** Moist well drained soil, tolerating dry conditions once established.

**HEIGHT/SPREAD** Twining 0.3-2m tall

**COMMENTS** Slender open twiner with delicate bluish-mauve pea flowers Oct-Jan.

**BOTANICAL NAME** Muehlenbeckia adpressa

**COMMON NAME** Climbing Lignum

**ENVIRONMENTAL CONDITIONS** Well drained sandy soil.

**HEIGHT/SPREAD** Climber

**COMMENTS** Perennial with small greenish-yellow flowers Sept-Dec. Good for fences and retaining walls, tolerates salt exposure and dryness.

**BOTANICAL NAME** Tetragonia implexicoma

**COMMON NAME** Bower Spinach

**ENVIRONMENTAL CONDITIONS** Well drained sandy soil. Tolerates dry soil with shade.

**HEIGHT/SPREAD** 0.3/2m

**COMMENTS** Succulent plant suitable for sandy soils/dunes.

**BOTANICAL NAME** Zygophyllum billardieri

**COMMON NAME** Coast Twin-leaf

**ENVIRONMENTAL CONDITIONS** Sandy well drained soil tolerating dry periods.

**HEIGHT/SPREAD** 0.3-0.6/1m

**COMMENTS** Fire retardant. Suitable for exposed coastal conditions. Attractive bright yellow flowers most of the year.



# torquay / jan juc summary

16

## Botanical Name

Acacia acinacea  
Acacia implexa  
Acacia mearnsii  
Acacia melanoxylon  
Acacia myrtifolia  
Acacia paradoxa  
Acacia pycnantha  
Acacia retinoides  
Acacia suaveolens  
Acacia verniciflua  
Acacia verticillata  
Acrotriche serrulata  
Allocasuarina misera  
Allocasuarina verticillata  
Alyxia buxifolia  
Arthropodium strictum  
Astroloma humifusum  
Atriplex cinerea  
Atriplex semibaccata  
Austrodanthonia geniculata  
Austrodanthonia racemosa  
Austrostipa flavescens  
Austrostipa mollis  
Banksia marginata  
Billardiera scandens  
Bossiaea prostrata  
Bursaria spinosa  
Calytrix tetragona  
Carex appressa  
Carex breviculmis  
Carpobrotus rossii  
Chrysocephalum apiculatum  
Clematis aristata  
Clematis microphylla  
Correa alba  
Correa reflexa  
Dianella revoluta  
Dichondra repens  
Dillwynia cinerescens  
Dillwynia glaberrima  
Dillwynia sericea  
Einadia nutans  
Epacris impressa  
Eucalyptus aromaphloia

## Common Name

Gold-dust Wattle  
Lightwood  
Black Wattle  
Blackwood  
Myrtle Wattle  
Hedge Wattle  
Golden Wattle  
Wirilda  
Sweet Wattle  
Varnish Wattle  
Prickly Moses  
Honey pots  
Dwarf Sheoke  
Drooping Sheoke  
Sea Box  
Chocolate Lily  
Cranberry Heath  
Coast Saltbush  
Creeping/Berry Saltbush  
Kneed Wallaby Grass  
Stiped Wallaby Grass  
Spear Grass  
Supple Spear Grass  
Silver Banksia  
Climbing/Common Appleberry  
Creeping Bossiaea  
Sweet Bursaria  
Fringe Myrtle  
Tall sedge  
Common Grass-sedge  
Karkalla  
Common Everlasting  
Mountain Clematis  
Small-leaved Clematis  
White Correa  
Common Correa  
Black-anther Flax-lily  
Kidney Weed  
Grey Parrot Pea  
Heath/Smooth Parrot Pea  
Showy Parrot Pea  
Nodding Saltbush  
Common Heath  
Scentbark

## Botanical Name

Eucalyptus baxteri  
Eucalyptus leucoxylon ssp  
bellariensis  
Eucalyptus obliqua  
Eucalyptus ovata  
Eucalyptus tricarpa  
Eucalyptus viminalis  
Eucalyptus willisii  
Gahnia sieberiana  
Glycine clandestina  
Gonocarpus tetragynus  
Goodenia geniculata  
Goodenia ovata  
Helichrysum scorpioides  
Hibbertia aspera  
Hibbertia riparia  
Isolepis nodosa  
Kennedia prostrata  
Lepidosperma species  
Leptospermum continentale  
Leptospermum myrsinoides  
Leptospermum scoparium  
Leucophyta brownii  
Leucopogon parviflorus  
Leucopogon virgatus  
Lomandra longifolia  
Lomandra multiflora  
Melaleuca lanceolata  
Microlaena stipoides  
Muehlenbeckia adpressa  
Myoporum insulare  
Olearia axillaris  
Olearia glutinosa  
Olearia ramulosa  
Ozothamnus ferrugineus  
Patersonia fragilis  
Patersonia occidentalis  
Platylobium obtusangulum  
Poa labillardierei  
Poa poiformis  
Pomaderris ferruginea  
Pomaderris paniculosa ssp paralia  
Pultenaea daphnoides  
Rhagodia candolleana

## Common Name

Brown Stringybark  
Bellarine Yellow Gum  
Stringybark  
Swamp Gum  
Red Ironbark  
Manna Gum  
Shining Peppermint  
Red-fruited Saw -sedge  
Twining Glycine  
Common Raspwort  
Bent Goodenia  
Hop Goodenia  
Button Everlasting  
Rough Guinea-flower  
Erect Guinea-flower  
Knobby Club-rush  
Running Postman  
Sword/rapier sedges  
Prickly Tea-tree  
Heath (silky) Tea-tree  
Manuka  
Cushion Bush  
Coast Beard Heath  
Common Beard Heath  
Spiny-headed Mat- rush  
Many-flowered Mat-rush  
Moonah  
Weeping grass  
Climbing Lignum  
Common Boobialla  
Coast Daisy Bush  
Sticky Daisy Bush  
Twiggy Daisy Bush  
Tree Everlasting  
Short Purple flag  
Long Purple-flag  
Common Flat- pea  
Common Tussock Grass  
Blue Tussock Grass  
Rusty Pomaderris  
Coast Pomaderris  
Large leaf Bush pea  
Seaberry Saltbush



# torquay / jan juc summary



17

Senecio quadridentatus	Cotton Fireweed
Sphaerolobium vimineum	Leafless Globe-pea
Spyridium parvifolium	Dusty Miller
Tetragonia implexicoma	Bower Spinach
Tetrateca ciliata	Common Pink Bells
Themeda triandra	Kangaroo Grass
Threlkeldia diffusa	Coast Bonefruit
Viola hederacea	Ivy-leaf Violet
Xanthorrhoea australis	Austral Grass-tree
Xanthorrhoea minor	Small Grass-tree
Zygophyllum billardieri	Coast Twin-leaf





# precinct 2 anglesea district



19

The Anglesea District includes the townships of Anglesea, Aireys Inlet, Fairhaven, Moggs Creek and Eastern View. The area includes a large proportion of Crown Land: Anglesea Heath (ALCOA lease), the Angahook-Lorne State park and various nature reserves.

The major vegetation communities in the district are Coastal Heathland, Heathy Woodland, Lowland Forest, Shrubby Foothill Forest and Shrubby Dry Forest. Although many species may be common in each community, they grow differently depending upon the aspect, soil and climatic conditions of the site.

Coastal Heathlands in the Anglesea District are restricted to areas close to the coastal fringe. The majority of these heathlands are treeless and support a wide range of heathland shrubs, groundcovers, grasses, sedges and rushes. The community is dominated by Prickly and Silky Tea-tree, with other common species being Dwarf She-oak and Thatch Saw-sedge.

Heathy Woodland overstorey is dominated by Messmate and Brown Stringybark with scattered occurrences of other gums such as Manna Gums, Swamp Gums, Shining Peppermint and Narrow-leaf Peppermint. The understorey is

dominated by a wide range of heathland shrubs, including Silver Banksia, Common Heath, Common Beard Heath, Myrtle Wattle and Guinea Flowers. A diversity of grasses, sedges, rushes and herbaceous species make up the ground layer.

Lowland Forest occurs on gentle to moderate slopes on sandy loams and silty clay loams. The overstorey includes Narrow-leaf Peppermint and Messmate. The shrub layer includes Common Heath, Honey-pots, Common Aotus, with a ground layer of Trailing Goodenia and Flax-lily. Sedges are also common with Wattle Mat-rush and Spiny-headed Mat-rush being found in most areas.

Shrubby Foothill Forest occurs on sites with clay loams over medium to heavy clays or, closer to the coast, on shallow clay loams over rock. The deep soils allow higher growth of canopy trees. As a result the overstorey is dominated by Messmate. Mountain Grey Gum, Brown Stringybark, Southern Blue Gum, Swamp Gum, Narrow-leaf Peppermint, and Manna Gum are occasional. Shrubs include Hop Goodenia, Prickly Moses, Snow Daisy Bush, Prickly Currant-bush, Narrow-leaf Wattle, Prickly Tea-tree and Large-leaf Bush-pea. The ground stratum often lacks diversity and is dominated

by Austral Bracken and Forest Wire-grass.

Shrubby Dry Forest is characterised by an overstorey of Red Ironbark, Messmate and Southern Blue Gum, with a shrub layer of Large-leaf Bush-pea, Common Heath and Prickly Moses. The ground stratum includes a number of grasses such as Tussock Grass and Wallaby-grass. Sedges are strongly represented by Wattle Mat-rush and Spiny-headed Mat-rush. Other common species are Trailing Goodenia and Honey-pots.



*Anglesea Grevillea*

# precinct 2 anglesea district

20

## Tall Trees

**BOTANICAL NAME** Eucalyptus cypellocarpa  
**COMMON NAME** Mountain Grey Gum

**ENVIRONMENTAL CONDITIONS** Adaptable to most conditions.  
**HEIGHT/SPREAD** 10-40m/10-15m  
**COMMENTS** Upright tree with dense canopy but growth is stunted in drier soils.

**BOTANICAL NAME** Eucalyptus aff. cypellocarpa (Anglesea)  
**COMMON NAME** Otway Grey Gum  
**ENVIRONMENTAL CONDITIONS** This species is isolated in distribution to some areas of Anglesea and Aireys Inlet.

**HEIGHT/SPREAD** 5-7m/5-6m  
**COMMENTS** Vulnerable in Victoria. Small tree to 7m with rough fibrous bark on the lower part of the trunk, and smooth bark on the upper trunk and branches. Endemic to Anglesea

**BOTANICAL NAME** Eucalyptus baxteri  
**COMMON NAME** Brown Stringybark  
**ENVIRONMENTAL CONDITIONS** Well drained damp soils.  
**HEIGHT/SPREAD** 15-40m/4-20m  
**COMMENTS** Good shade and shelter tree.

**BOTANICAL NAME** Eucalyptus globulus ssp globulus  
**COMMON NAME** Southern Blue Gum  
**ENVIRONMENTAL CONDITIONS** Prefers deeper, well drained soils.  
**HEIGHT/SPREAD** 25-40m/10-15m  
**COMMENTS** Fast growing tall tree with large crown. Long, dark green leaves with eucalyptus aroma.

**BOTANICAL NAME** Eucalyptus obliqua  
**COMMON NAME** Messmate Stringybark  
**ENVIRONMENTAL CONDITIONS** Moist well drained soils, tolerating short dry periods.  
**HEIGHT/SPREAD** 5-30m/6-20m  
**COMMENTS** Excellent shade and shelter tree for larger areas.

**BOTANICAL NAME** Eucalyptus ovata  
**COMMON NAME** Swamp Gum  
**ENVIRONMENTAL CONDITIONS** Prefers moist soils, tolerates inundation during winter and dryness in summer.  
**HEIGHT/SPREAD** 6-20m/6-10m  
**COMMENTS** Fast growing densely crowned tree. Good for providing shade.

**BOTANICAL NAME** Eucalyptus radiata  
**COMMON NAME** Narrow-leaf Peppermint  
**ENVIRONMENTAL CONDITIONS** Well drained soils.  
**HEIGHT/SPREAD** 6-40m/6-20m  
**COMMENTS** Fine textured bark and narrow leaves.

**BOTANICAL NAME** Eucalyptus tricarpa  
**COMMON NAME** Red Ironbark  
**ENVIRONMENTAL CONDITIONS** Poor shallow soils including clays and gravels.  
**HEIGHT/SPREAD** 10-30m/10-20m  
**COMMENTS** Attractive upright to spreading tree with rough dark bark. Cream or pink flowers.

**BOTANICAL NAME** Eucalyptus viminalis  
**COMMON NAME** Manna Gum  
**ENVIRONMENTAL CONDITIONS** Adaptable to a wide range of soils, but will grow better on deeper soils.  
**HEIGHT/SPREAD** 10-40m/8-15m  
**COMMENTS** Fast growing tree used as a food source by koalas.

**BOTANICAL NAME** Eucalyptus willisii  
**COMMON NAME** Shining Peppermint  
**ENVIRONMENTAL CONDITIONS** Prefers drier conditions.  
**HEIGHT/SPREAD** 2-10m/4m  
**COMMENTS** Small tree with fibrous bark on lower trunk. Masses of small cream flowers in spring.



*Golden Wattle*

## Trees

**BOTANICAL NAME** Acacia dealbata  
**COMMON NAME** Silver Wattle  
**ENVIRONMENTAL CONDITIONS** Prefers deep, moist soils. Full to shaded sun.  
**HEIGHT/SPREAD** 2-30m/5-10m  
**COMMENTS** Fast growing open tree with bluish green feathery-like leaves flowering in profuse yellow balls July-Oct.

**BOTANICAL NAME** Acacia mearnsii  
**COMMON NAME** Black Wattle  
**ENVIRONMENTAL CONDITIONS** Prefers well drained soils. Will grow under harsh conditions.  
**HEIGHT/SPREAD** 5-15m/6-10m  
**COMMENTS** Fast growing, short lived (15yrs) wattle with dark green feathery-like foliage and strongly scented pale yellow flowers Sept-Dec.

**BOTANICAL NAME** Acacia melanoxylon  
**COMMON NAME** Blackwood  
**ENVIRONMENTAL CONDITIONS** Tolerates a wide range of soils, but prefers deep, moist soils.  
**HEIGHT/SPREAD** 6-30m/4-15m  
**COMMENTS** Long lived wattle suited to screening and wind breaks. Dense green foliage and pale creamy flowers July-Oct.

**BOTANICAL NAME** Acacia pycnantha  
**COMMON NAME** Golden Wattle  
**ENVIRONMENTAL CONDITIONS** Grows well on heavy and light soils, prefers well drained soils.  
**HEIGHT/SPREAD** 3-8m/2-5m  
**COMMENTS** Hardy, quick growing, large, leathery dark green leaves. Good for screening, windbreaks and erosion control. Large golden yellow flowers July-Oct



# precinct 2 anglesea district



2 1

**BOTANICAL NAME** Allocasuarina littoralis

**COMMON NAME** Black Sheoak

**ENVIRONMENTAL CONDITIONS**

Adaptable to a range of positions in well drained soil.

**HEIGHT/SPREAD** 4-8m/2-5m

**COMMENTS** Small upright tree with fine branchlets. Rose coloured flowers on female plants in autumn.

**BOTANICAL NAME** Allocasuarina verticillata

**COMMON NAME** Drooping Sheoak

**ENVIRONMENTAL CONDITIONS** Well drained soils.

**HEIGHT/SPREAD** 4-10m/3-6m

**COMMENTS** Hardy tree with drooping greyish-green branchlets. Good for wind break.

**BOTANICAL NAME** Pomaderris aspera

**COMMON NAME** Hazel Pomaderris

**ENVIRONMENTAL CONDITIONS** Moist well drained soil.

**HEIGHT/SPREAD** 3-8m/2-4m

**COMMENTS** Slender leafy shrub or small tree. Creamy green flowers in summer.

**BOTANICAL NAME** Prostanthera lasianthos

**COMMON NAME** Christmas Bush

**ENVIRONMENTAL CONDITIONS** Moist well drained loamy soils.

**HEIGHT/SPREAD** 2-8m/2-5m

**COMMENTS** Compact small tree. Dark green toothed leaves with minty aroma when crushed. White flowers spotted with orange and purple Nov-Jan. Useful screen plant.

## Tall Shrubs 2.5 - 6 metres

**BOTANICAL NAME** Acacia mucronata

**COMMON NAME** Narrow-leaf Wattle

**ENVIRONMENTAL CONDITIONS** Moist well drained soils.

**HEIGHT/SPREAD** 2-6m/2-5m

**COMMENTS** Good screen plant, requires pruning. Drought resistant.

**BOTANICAL NAME** Acacia paradoxa

**COMMON NAME** Hedge Wattle

**ENVIRONMENTAL CONDITIONS** Will adapt to most soils.

**HEIGHT/SPREAD** 2-4m/2-5m

**COMMENTS** Fast growing dense and spreading shrub covered with thorns. Excellent small bird habitat. Golden yellow flowers.

**BOTANICAL NAME** Acacia stricta

**COMMON NAME** Hop Wattle

**ENVIRONMENTAL CONDITIONS** Reliable in most soils.

**HEIGHT/SPREAD** 2-5m/2-4m

**COMMENTS** Quick growing medium plant. Drought hardy. Yellow flowers.

**BOTANICAL NAME** Acacia verniciflua

**COMMON NAME** Varnish Wattle

**ENVIRONMENTAL CONDITIONS** Tolerates wet and dry soils.

**HEIGHT/SPREAD** 1-4m/3-5m

**COMMENTS** Quick growing light screening plant with profuse golden balls in spring.

**BOTANICAL NAME** Acacia verticillata

**COMMON NAME** Prickly Moses

**ENVIRONMENTAL CONDITIONS** Tolerates most conditions and withstands periods of waterlogging.

**HEIGHT/SPREAD** 1-5m/3-5m

**COMMENTS** Low shrub to open tree with prickly leaves. Excellent bird habitat. Bright yellow flowers June-Dec.

**BOTANICAL NAME** Banksia marginata

**COMMON NAME** Silver Banksia

**ENVIRONMENTAL CONDITIONS**

Common on a wide variety of sites and soils, but prefers good drainage. Tolerates soils wet in winter and dry in summer.

**HEIGHT/SPREAD** 2.5-6m/1-5m

**COMMENTS** Low shrub in heathlands to small tree in open forests. Excellent screening plant. Stiff dark green leaves. Honey coloured flowers Oct-June. Attractive to birds.

**BOTANICAL NAME** Bursaria spinosa

**COMMON NAME** Sweet Bursaria

**ENVIRONMENTAL CONDITIONS** Prefers well drained soils.

**HEIGHT/SPREAD** 1-6m/2-3m

**COMMENTS** Prickly shrub with creamy fragrant flowers Dec-March. Important nectar source for birds and insects. Bundles of brown seed pods in autumn.

**BOTANICAL NAME** Cassinia aculeata

**COMMON NAME** Common Cassinia

**ENVIRONMENTAL CONDITIONS** Easily grown in a range of well drained soils and positions.

**HEIGHT/SPREAD** 2-4m/1-2m

**COMMENTS** Bushy shrub with a spreading habit. Small white flower heads borne in large, dense clusters at the end of branchlets Nov-March.

**BOTANICAL NAME** Cassinia longifolia

**COMMON NAME** Shiny Cassinia

**ENVIRONMENTAL CONDITIONS** Adaptable to most conditions.

**HEIGHT/SPREAD** 2-4m/2-3m

**COMMENTS** Dense terminal clusters of small white flowers in summer.

**BOTANICAL NAME** Coprosma quadrifida

**COMMON NAME** Prickly Currant-bush

**ENVIRONMENTAL CONDITIONS** Moist well drained soil.

**HEIGHT/SPREAD** 2-4m/1-1.5m

**COMMENTS** Open, upright spiny shrub. Small green leaves and reddish-orange berries.

**BOTANICAL NAME** Gynatrix pulchella

**COMMON NAME** Hemp Bush

**ENVIRONMENTAL CONDITIONS** Well drained moist soil.

**HEIGHT/SPREAD** 2-4m/1.5-3m

**COMMENTS** Soft leaved small shrub with hairy heart shaped leaves. Panicles of fragrant small greenish-white flowers Aug-Oct.

**BOTANICAL NAME** Leptospermum continentale

**COMMON NAME** Prickly Tea-tree

**ENVIRONMENTAL CONDITIONS** Adaptable, tolerates moisture.

**HEIGHT/SPREAD** 1-4m/1-2m

**COMMENTS** Hardy prickly shrub great for screening. Masses of white flowers Oct-March.

**BOTANICAL NAME** Leptospermum lanigerum

**COMMON NAME** Woolly Tea tree

**ENVIRONMENTAL CONDITIONS** Grown in a range of positions in moist soils.

**HEIGHT/SPREAD** 2-5m/1-3m

**COMMENTS** Robust shrub with a dense bushy habit. Prominent white flowers Sept-Jan.

**BOTANICAL NAME** Leucopogon parviflorus

**COMMON NAME** Coast Beard Heath

**ENVIRONMENTAL CONDITIONS** Well drained sandy soils.

**HEIGHT/SPREAD** 1-4m/2-3m

**COMMENTS** Shrub to small tree with masses of densely bearded white flowers July-Nov. Berries bird attracting. Slow growing.

# precinct 2 anglesea district

2 2

**BOTANICAL NAME** Melaleuca lanceolata  
**COMMON NAME** Moonah  
**ENVIRONMENTAL CONDITIONS** Tolerates a wide range of soils, wet and dry, but prefers well drained soils.  
**HEIGHT/SPREAD** 2.5-5m/3-6m  
**COMMENTS** Hardy shrub to small tree which provides excellent shelter/screening. Cream flowers in cylindrical spikes Oct-Dec.

**BOTANICAL NAME** Melaleuca squarrosa  
**COMMON NAME** Scented paperbark  
**ENVIRONMENTAL CONDITIONS** Moist to wet soils, exposed to some sun.  
**HEIGHT/SPREAD** 2-5m/1-2m  
**COMMENTS** Attractive salt tolerant shrub. Papery bark. Cream to yellow fragrant flowers Sept-Feb.

**BOTANICAL NAME** Myoporum insulare  
**COMMON NAME** Common Boobialla  
**ENVIRONMENTAL CONDITIONS** Highly adaptable plant, although prefers sun and well drained soils.  
**HEIGHT/SPREAD** 2.5-6m/3m  
**COMMENTS** Fire retardant. Large rounded shrub, dense foliage, smooth, thick dark green leaves, white flowers with purple spots in spring. Good screening and hedging plant, salt tolerant.

**BOTANICAL NAME** Olearia argophylla  
**COMMON NAME** Musk Daisy-bush  
**ENVIRONMENTAL CONDITIONS** Enjoys a sheltered position on moist well drained soils.  
**HEIGHT/SPREAD** 3-6m/3-5m  
**COMMENTS** Fast growing shrub or small tree with gnarled trunk covered with ribbony grey bark. Large leaves.

**BOTANICAL NAME** Ozothamnus ferrugineus  
**COMMON NAME** Tree Everlasting  
**ENVIRONMENTAL CONDITIONS** Prefers moist, well drained soils.  
**HEIGHT/SPREAD** 2-6m/1-3m  
**COMMENTS** Shrub to small tree. Narrow dark green leaves and white flower clusters Nov-Feb.

**BOTANICAL NAME** Pomaderris ferruginea  
**COMMON NAME** Rusty Pomaderris  
**ENVIRONMENTAL CONDITIONS** Moist well drained soils.  
**HEIGHT/SPREAD** 1-4m/1-1.5m  
**COMMENTS** Beautiful flowering shrub with rusty red young growth.

**BOTANICAL NAME** Viminaria juncea  
**COMMON NAME** Golden Spray  
**ENVIRONMENTAL CONDITIONS** Adaptable to poorly drained soils, tolerating salt and lime.  
**HEIGHT/SPREAD** 2.5-5m/2m  
**COMMENTS** Fast growing slender, erect leafless shrub with long, flexible needle-like branches. Long drooping sprays of yellow pea flowers Oct-Feb.



Silver Banksia

## Medium Shrubs 1 - 3 metres

**BOTANICAL NAME** Acacia acinacea  
**COMMON NAME** Gold-dust Wattle  
**ENVIRONMENTAL CONDITIONS** Adaptable to well drained soils.  
**HEIGHT/SPREAD** 0.5-2.5m/2-4m  
**COMMENTS** Hardy plant good for low screening, profuse bright yellow balls Aug-Nov.

**BOTANICAL NAME** Acacia genistifolia  
**COMMON NAME** Spreading Wattle  
**ENVIRONMENTAL CONDITIONS** Tolerates wet or dry soil  
**HEIGHT/SPREAD** 1-3m/1-3m  
**COMMENTS** Fast growing open spreading shrub with narrow prickly leaves, perfumed lemon to cream balls. Flowering autumn to spring.

**BOTANICAL NAME** Acacia myrtifolia  
**COMMON NAME** Myrtle Wattle  
**ENVIRONMENTAL CONDITIONS** Suits most soils.  
**HEIGHT/SPREAD** 1-3m/1-2m  
**COMMENTS** Fast growing ornamental bush with reddish stems, good for low screening. Profuse flowering in spring.

**BOTANICAL NAME** Acacia suaveolens  
**COMMON NAME** Sweet Wattle  
**ENVIRONMENTAL CONDITIONS** Well drained soils.  
**HEIGHT/SPREAD** 1-3m/2-5m  
**COMMENTS** Fast growing ornamental low screen or windbreak. Bluish green narrow leaves. Perfumed cream flowers April-Oct.

**BOTANICAL NAME** Allocasuarina paludosa  
**COMMON NAME** Scrub Sheoak  
**ENVIRONMENTAL CONDITIONS** Moist well drained clay or sandy soils.  
**HEIGHT/SPREAD** 0.5-2m/1-2m  
**COMMENTS** Slow growing open or dense grey-green shrub. Male flowers bronze, female reddish purple.

**BOTANICAL NAME** Alyxia buxifolia  
**COMMON NAME** Sea Box  
**ENVIRONMENTAL CONDITIONS** Well drained soils.  
**HEIGHT/SPREAD** 1-2m/1-3m  
**COMMENTS** Dark green hard leaved low shrub. Produces white flowers Oct-Feb followed by red fruit.

**BOTANICAL NAME** Aotus ericoides  
**COMMON NAME** Common Aotus  
**ENVIRONMENTAL CONDITIONS** Adaptable to well drained soils, tolerating both wet or dry periods.  
**HEIGHT/SPREAD** 0.5-1.5m/0.5-1.5m  
**COMMENTS** Fast growing bushy upright shrub with clusters of small yellow and red pea flowers Aug-Dec.

**BOTANICAL NAME** Bossiaea cinerea  
**COMMON NAME** Showy Bossiaea  
**ENVIRONMENTAL CONDITIONS** Adapts to most well drained soils.  
**HEIGHT/SPREAD** 1-2m/1-2m  
**COMMENTS** Dense low rounded shrub tolerating some coastal exposure. Attractive foliage and yellow pea flowers.

**BOTANICAL NAME** Correa alba  
**COMMON NAME** White Correa  
**ENVIRONMENTAL CONDITIONS** Well drained soils, tolerating moisture or extended dry periods.  
**HEIGHT/SPREAD** 0.5-2m/1-3m  
**COMMENTS** A useful plant for soil binding or as a low screen. Waxy white star shaped flowers most of the year.

**BOTANICAL NAME** Correa reflexa  
**COMMON NAME** Common Correa  
**ENVIRONMENTAL CONDITIONS** Well drained soil.  
**HEIGHT/SPREAD** 0.3-2m/1-2m  
**COMMENTS** Medium sized shrub with light green or green/red bells March-Sept. Excellent plant for dry shady positions.

# precinct 2 anglesea district



23

**BOTANICAL NAME** *Daviesia latifolia*  
**COMMON NAME** Hop Bitter-pea  
**ENVIRONMENTAL CONDITIONS** Adaptable to most soils.  
**HEIGHT/SPREAD** 1-3m/1-2m  
**COMMENTS** Useful in massed plantings for screening or hedges. Attractive yellow pea flowers.

**BOTANICAL NAME** *Goodenia ovata*  
**COMMON NAME** Hop Goodenia  
**ENVIRONMENTAL CONDITIONS** Grows in any situation. Tolerates waterlogging.  
**HEIGHT/SPREAD** 1-2.5m/1-3m  
**COMMENTS** Green leaves, bright yellow flowers spring to summer.

**BOTANICAL NAME** *Goodia lotifolia*  
**COMMON NAME** Golden-tip  
**ENVIRONMENTAL CONDITIONS** Well drained soils, intolerant of alkaline soils.  
**HEIGHT/SPREAD** 1-3m/1-5m  
**COMMENTS** Fast growing open shrub producing profuse golden yellow pea flowers Sept-Dec.

**BOTANICAL NAME** *Hakea decurrens*  
**COMMON NAME** Needle Hakea  
**ENVIRONMENTAL CONDITIONS** Adaptable to any conditions.  
**HEIGHT/SPREAD** 1-2m/1-2m  
**COMMENTS** Prickly shrub with sharp needle-like leaves. White scented flowers in spring.

**BOTANICAL NAME** *Hakea repullans*  
**COMMON NAME** Western Furze Hakea  
**ENVIRONMENTAL CONDITIONS** Well drained soil.  
**HEIGHT/SPREAD** 1-2m/1-2m  
**COMMENTS** Prickly shrub covered with creamy flowers in spring.

**BOTANICAL NAME** *Hakea ulicina*  
**COMMON NAME** Furze Hakea  
**ENVIRONMENTAL CONDITIONS** Well drained dry to moist soils.  
**HEIGHT/SPREAD** 1-3m/1-2m  
**COMMENTS** Stiff, narrow upright shrub with narrow sharp pointed leaves. Small clusters of white to cream flowers July-Nov.

**BOTANICAL NAME** *Indigofera australis*  
**COMMON NAME** Austral Indigo  
**ENVIRONMENTAL CONDITIONS** Grows rapidly in a moist, sheltered position.  
**HEIGHT/SPREAD** 0.5-2m  
**COMMENTS** Open shrub with long slender branches with soft bluish green feather-like leaves. Attractive pink to mauve pea flowers in racemes Sept-Dec.

**BOTANICAL NAME** *Myoporum* sp  
**COMMON NAME** Sticky Boobialla  
**ENVIRONMENTAL CONDITIONS** Well drained dry soils.  
**HEIGHT/SPREAD** 0.5-2m/1.5-2m  
**COMMENTS** Coastal or dry areas, tolerating exposed or salty conditions.

**BOTANICAL NAME** *Olearia axillaris*  
**COMMON NAME** Coast Daisy Bush  
**ENVIRONMENTAL CONDITIONS** Well drained dry sandy soil. Full sun.  
**HEIGHT/SPREAD** 1-2m/1-2m  
**COMMENTS** Attractive flowering plant with aromatic leaves and yellow daisy flowers Feb-April.

**BOTANICAL NAME** *Olearia lirata*  
**COMMON NAME** Snow Daisy-bush  
**ENVIRONMENTAL CONDITIONS** Moist well drained soil.  
**HEIGHT/SPREAD** 1-2m/1m  
**COMMENTS** Snowy white daisy flowers in Spring.

**BOTANICAL NAME** *Olearia phlogopappa*  
**COMMON NAME** Dusty Daisy-bush  
**ENVIRONMENTAL CONDITIONS** Well drained soils.  
**HEIGHT/SPREAD** 1-3m/1-2m  
**COMMENTS** Shrub with an open to dense habit, masses of white daisy flower heads in large clusters.

**BOTANICAL NAME** *Ozothamnus rosmarinifolius*  
**COMMON NAME** Rosemary Everlasting  
**ENVIRONMENTAL CONDITIONS** Well drained, moist soils.  
**HEIGHT/SPREAD** 1.5-3m/1-2m  
**COMMENTS** Upright shrub with clusters of whitish flowers Dec-March.

**BOTANICAL NAME** *Ozothamnus turbinatus*  
**COMMON NAME** Coast Everlasting  
**ENVIRONMENTAL CONDITIONS** Sandy well drained soil.  
**HEIGHT/SPREAD** 1-3m/1.5m  
**COMMENTS** Shrub with bushy rounded habit. Small cream to yellowish flower-heads Feb-May. Tolerates salt spray.

**BOTANICAL NAME** *Pomaderris* ssp *paralia*  
**COMMON NAME** Coast Pomaderris  
**ENVIRONMENTAL CONDITIONS** Well drained, dry soils.  
**HEIGHT/SPREAD** 1-2.5m high  
**COMMENTS** Hardy coastal plant with leaves dark green above and whitish beneath – small cream flowers in spring.

**BOTANICAL NAME** *Prostanthera nivea*  
**COMMON NAME** Snowy Mint bush  
**ENVIRONMENTAL CONDITIONS** Moist well drained soil.  
**HEIGHT/SPREAD** 1-2m/1-2m  
**COMMENTS** Fine light green leaves. Flowers white to mauve with yellow spots in throat Sept-Dec.

**BOTANICAL NAME** *Pultenaea daphnoides*  
**COMMON NAME** Large leaf Bush  
**ENVIRONMENTAL CONDITIONS** Well drained soils.  
**HEIGHT/SPREAD** 1-3m/0.5-2m  
**COMMENTS** Attractive shrub with large yellow and red pea flowers Aug-Nov.

**BOTANICAL NAME** *Pultenaea mollis*  
**COMMON NAME** Soft Bush-pea  
**ENVIRONMENTAL CONDITIONS** Well drained soils.  
**HEIGHT/SPREAD** 1-2.5m  
**COMMENTS** A bushy heathland/ woodland shrub with soft green foliage bearing masses of yellow pea flowers in early Spring.

**BOTANICAL NAME** *Pultenaea scabra*  
**COMMON NAME** Rough Bush-pea  
**ENVIRONMENTAL CONDITIONS** Moist well drained soil.  
**HEIGHT/SPREAD** 1-2m/0.5-1.5m  
**COMMENTS** Erect or rounded shrub. Masses of orange-yellow flowers Sept-Nov.

**BOTANICAL NAME** *Solanum laciniatum*  
**COMMON NAME** Kangaroo Apple  
**ENVIRONMENTAL CONDITIONS** Well drained soils.  
**HEIGHT/SPREAD** 1-3m/1-3m  
**COMMENTS** Bluish to purple flowers Sept-March. Orange-yellow fruit when ripe. Fruit may be poisonous if eaten when green.

**BOTANICAL NAME** *Spyridium parvifolium*  
**COMMON NAME** Dusty Miller  
**ENVIRONMENTAL CONDITIONS** Well drained soils.  
**HEIGHT/SPREAD** 1-3m/1-2m  
**COMMENTS** Shrub good for providing screen in dry, shady areas. Small white flowers are surrounded by dusty-white floral leaves July-Nov.

# precinct 2 anglesea district

2 4

## Low Plants to 1 metre high

**BOTANICAL NAME** *Allocasuarina misera*

**COMMON NAME** Dwarf Sheoak  
**ENVIRONMENTAL CONDITIONS** Moist well drained sandy soil.

**HEIGHT/SPREAD** 0.5-1m/1-2m  
**COMMENTS** Ornamental, low growing shrub. Male plant has bronze flowers, female reddish purple flowers.

**BOTANICAL NAME** *Amperea xiphoclada*

**COMMON NAME** Broom Spurge  
**ENVIRONMENTAL CONDITIONS** Moist well drained soils.

**HEIGHT/SPREAD** 0.3-0.8m/0.4-0.5m  
**COMMENTS** Wiry shrub with rigid stems arising from a woody rootstock. Smooth dark green narrow leaves.

**BOTANICAL NAME** *Argentipallium obtusifolium*

**COMMON NAME** Blunt Everlasting  
**ENVIRONMENTAL CONDITIONS** Well drained soils.

**HEIGHT/SPREAD** 0.3-0.5m/0.3-0.5m  
**COMMENTS** A white everlasting flower in late winter/early spring. Leaves re blunt and whitish underneath.

**BOTANICAL NAME** *Brunonia australis*

**COMMON NAME** Blue Pincushion  
**ENVIRONMENTAL CONDITIONS** Moist well drained soil.

**HEIGHT/SPREAD** 0.1-0.5m/0.1-0.15m  
**COMMENTS** Perennial herb with a rosette of spoon shaped leaves and dense blue pincushion-like flowerheads on stems Oct-Jan.

**BOTANICAL NAME** *Calytrix tetragona*

**COMMON NAME** Fringe Myrtle  
**ENVIRONMENTAL CONDITIONS** Well drained soils, tolerating extended dry periods and occasional inundation.

**HEIGHT/SPREAD** 1m/1-2m  
**COMMENTS** Fine green aromatic leaves. Very attractive dense heads of white and pink flowers Aug-Nov.

**BOTANICAL NAME** *Chrysocephalum semipapposum*

**COMMON NAME** Clustered Everlasting  
**ENVIRONMENTAL CONDITIONS** Variable, from moist to dry soils.

**HEIGHT/SPREAD** 0.3m-0.5m  
**COMMENTS** Dense perennial herb with grey foliage and dense terminal clusters of yellow flowerheads Oct- May.

**BOTANICAL NAME** *Cynoglossum suaveolens*

**COMMON NAME** Sweet Hound's-tongue  
**ENVIRONMENTAL CONDITIONS** Well drained heavy soil.

**HEIGHT/SPREAD** 0.1-0.3m  
**COMMENTS** Erect to spreading perennial herb, highly fragrant.

**BOTANICAL NAME** *Dillwynia cinerascens*

**COMMON NAME** Grey Parrot Pea  
**ENVIRONMENTAL CONDITIONS** Prefers dry soils, although can tolerate a wide range of well drained soil types.

**HEIGHT/SPREAD** 0.6-1m/0.5-1.5m  
**COMMENTS** Open, erect or spreading understory shrub with clusters of yellow and orange pea flowers July-Nov.

**BOTANICAL NAME** *Dillwynia glaberrima*

**COMMON NAME** Heath/Smooth Parrot Pea

**ENVIRONMENTAL CONDITIONS** Can tolerate a wide range of well drained soil types.

**HEIGHT/SPREAD** 1m/1-2m  
**COMMENTS** Bright yellow and red flowers Aug-Dec.

**BOTANICAL NAME** *Epacris impressa*

**COMMON NAME** Common Heath  
**ENVIRONMENTAL CONDITIONS** Moist well drained soil, tolerating limited wet or dry periods once established.

**HEIGHT/SPREAD** 0.5-1m/0.2-0.6m  
**COMMENTS** Floral emblem of Victoria. Open, wiry shrub with attractive pink or white flowers March-Nov. Good rockery plant, particularly when planted in groups.

**BOTANICAL NAME** *Grevillea infecunda*

**COMMON NAME** Anglesea Grevillea  
**ENVIRONMENTAL CONDITIONS** Well drained soils.

**HEIGHT/SPREAD** 1m/1m  
**COMMENTS** Scrambling semi-erect shrub with large, coarsely toothed prickly leaves and red flowers Oct-Dec. Endemic to Anglesea.

**BOTANICAL NAME** *Helichrysum scorpioides*

**COMMON NAME** Button Everlasting  
**ENVIRONMENTAL CONDITIONS** Well drained soils.

**HEIGHT/SPREAD** 0.3m/0.2-0.3m  
**COMMENTS** Large yellow buttons spring-autumn. Attractive rockery plant which dies back after flowering.

**BOTANICAL NAME** *Hibbertia fasciculata*

**COMMON NAME** Bundled Guinea-flower

**ENVIRONMENTAL CONDITIONS** Moist well drained sandy soil.

**HEIGHT/SPREAD** 0.3-0.6m/0.3  
**COMMENTS** Low, erect plant with soft hairy needle like leaves and clusters of yellow flowers for a long period.

**BOTANICAL NAME** *Hibbertia riparia*

**COMMON NAME** Erect Guinea-flower  
**ENVIRONMENTAL CONDITIONS** Moist well drained soil.

**HEIGHT/SPREAD** 0.3-1m/0.6  
**COMMENTS** Open erect shrub with yellow flowers spring and summer.

**BOTANICAL NAME** *Hibbertia sericea*

**COMMON NAME** Silky Guinea-flower  
**ENVIRONMENTAL CONDITIONS** Well drained soil.

**HEIGHT/SPREAD** 0.3-1m/0.6  
**COMMENTS** Small erect shrub covered in silky hairs. Profuse terminal clusters of yellow flowers Oct-Dec.

**BOTANICAL NAME** *Hovea heterophylla*

**COMMON NAME** Common Hovea  
**ENVIRONMENTAL CONDITIONS** Dry well drained soil.

**HEIGHT/SPREAD** 0.3-0.6m/0.3m  
**COMMENTS** Olive green leaves and small mauve pea flowers along the stems Aug-Oct.

**BOTANICAL NAME** *Isopogon ceratophyllus*

**COMMON NAME** Horny Cone-bush  
**ENVIRONMENTAL CONDITIONS** Requires excellent drainage.

**HEIGHT/SPREAD** 0.2-0.6m/0.5-1.2m  
**COMMENTS** Small shrub to 50cm tall with woody rootstock and a compact mound of stiff, rigid, prickly light green leaves. Small bright yellow flowers Sept-Nov.



# precinct 2 anglesea district



25

**BOTANICAL NAME** *Lasiopetalum baueri*  
**COMMON NAME** Velvet Bush  
**ENVIRONMENTAL CONDITIONS** Dry, well drained soil.  
**HEIGHT/SPREAD** 1-1m/1m  
**COMMENTS** Attractive plant with small drooping clusters of hairy greyish-pink to white flowers.

**BOTANICAL NAME** *Leptorhynchos squamatus*  
**COMMON NAME** Scaly Buttons  
**ENVIRONMENTAL CONDITIONS** Well drained moist soils.  
**HEIGHT/SPREAD** 0.15-0.3m/0.4m  
**COMMENTS** Small yellow flowerheads on long scaly stalks Sept-Jan.

**BOTANICAL NAME** *Leptorhynchos tenuifolius*  
**COMMON NAME** Wiry Buttons  
**ENVIRONMENTAL CONDITIONS** Prefers well drained situations.  
**HEIGHT/SPREAD** 0.1-0.3m/0.3m  
**COMMENTS** Single yellow flowerheads Sept-Jan.

**BOTANICAL NAME** *Leptospermum myrsinoides*  
**COMMON NAME** Heath (silky) Tea-tree  
**ENVIRONMENTAL CONDITIONS** Adaptable, prefers good drainage, but can tolerate poor drainage once established.  
**HEIGHT/SPREAD** 0.5-1m/1m  
**COMMENTS** Attractive shrub with white or pink flowers in spring and summer.

**BOTANICAL NAME** *Leucophyta brownii*  
**COMMON NAME** Cushion Bush  
**ENVIRONMENTAL CONDITIONS** Well drained dry conditions. Full sun.  
**HEIGHT/SPREAD** 0.2-1m/0.5-2m  
**COMMENTS** Attractive rounded silvery/grey shrub which withstands coastal spray and salt. Foliage reflects available light at night time, making it an ideal plant for defining pathways.

**BOTANICAL NAME** *Microseris lanceolata*  
**COMMON NAME** Yam Daisy  
**ENVIRONMENTAL CONDITIONS** Well drained soils.  
**HEIGHT/SPREAD** 0.4m/0.15-0.25m  
**COMMENTS** Herb with single bright yellow daisy flowerhead on stalk July-Nov.

**BOTANICAL NAME** *Olearia ramulosa*  
**COMMON NAME** Twiggy Daisy Bush  
**ENVIRONMENTAL CONDITIONS** Well drained soils.  
**HEIGHT/SPREAD** 0.5-1m/1m  
**COMMENTS** Attractive garden plant with white or mauve flowerheads Sept-May. Fast growing.

**BOTANICAL NAME** *Olearia teretifolia*  
**COMMON NAME** Cypress Daisy-bush  
**ENVIRONMENTAL CONDITIONS** Well drained soils.  
**HEIGHT/SPREAD** To 1m high  
**COMMENTS** Small erect cypress-like green shrub with masses of tiny white daisy flowers.

**BOTANICAL NAME** *Persoonia juniperina*  
**COMMON NAME** Prickly Geebung  
**ENVIRONMENTAL CONDITIONS** Well drained soils.  
**HEIGHT/SPREAD** 0.3-1m/0.6-0.8m  
**COMMENTS** Erect or rounded small shrub with fine prickly leaves and single yellow tubular flowers Dec-March.

**BOTANICAL NAME** *Phyllanthus hirtellus*  
**COMMON NAME** Thyme Spurge  
**ENVIRONMENTAL CONDITIONS** Sandy or gravelly soils.  
**HEIGHT/SPREAD** To 0.8m  
**COMMENTS** Sparse shrub with green hairy leaves and small pale yellow flowers in winter/spring.

**BOTANICAL NAME** *Pimelea glauca*  
**COMMON NAME** Smooth Rice-flower  
**ENVIRONMENTAL CONDITIONS** Well drained soils.  
**HEIGHT/SPREAD** 0.3-0.6m/0.6m  
**COMMENTS** Small ovate bluish-green leaves, creamy-white flowers July-Feb.

**BOTANICAL NAME** *Pimelea humilis*  
**COMMON NAME** Common Rice-flower  
**ENVIRONMENTAL CONDITIONS** Moist well drained soils.  
**HEIGHT/SPREAD** 0.1-0.5m/0.3-1m  
**COMMENTS** Small perennial plant with a suckering habit. Heads of white flowers spring/summer

**BOTANICAL NAME** *Pimelea linifolia*  
**COMMON NAME** Slender Rice-flower  
**ENVIRONMENTAL CONDITIONS** Well drained soil.  
**HEIGHT/SPREAD** 0.2-0.5m  
**COMMENTS** Erect or clump forming prostrate plant with terminal clusters of hairy white flowers in spring.

**BOTANICAL NAME** *Pimelea octophylla*  
**COMMON NAME** Woolly Rice-flower  
**ENVIRONMENTAL CONDITIONS** Well drained sandy soils.  
**HEIGHT/SPREAD** 0.4-1m/0.5m  
**COMMENTS** Masses of perfumed, woolly, creamy yellow flowers Oct-Dec. Foliage and flowers soft to touch.

**BOTANICAL NAME** *Pimelea serpyllifolia*  
**COMMON NAME** Thyme Rice-flower  
**ENVIRONMENTAL CONDITIONS** Well drained sandy soil.  
**HEIGHT/SPREAD** To 1m  
**COMMENTS** Shrub with small clusters of tiny yellow flowers at branch tips winter to spring.

**BOTANICAL NAME** *Podolepis jaceoides*  
**COMMON NAME** Showy Podolepis  
**ENVIRONMENTAL CONDITIONS** Well drained soils.  
**HEIGHT/SPREAD** 0.3-0.6m/0.3m  
**COMMENTS** Erect perennial herb with bright yellow daisy flowerheads borne singly on long stems. Spectacular plant in flower Oct-Dec.

**BOTANICAL NAME** *Rhagodia candolleana*  
**COMMON NAME** Seaberry Saltbush  
**ENVIRONMENTAL CONDITIONS** Well drained soils.  
**HEIGHT/SPREAD** 1m/1m  
**COMMENTS** Semi-succulent scrambling shrub. Small white flowers Dec-Apr. Small red berries in autumn.

**BOTANICAL NAME** *Sphaerolobium vimineum*  
**COMMON NAME** Leafless Globe-pea  
**ENVIRONMENTAL CONDITIONS** Moist well drained soil.  
**HEIGHT/SPREAD** 0.3-0.5m/0.3-0.6m  
**COMMENTS** Attractive in a rockery or planted with other small shrubs. Small yellow pea flowers Sept- Jan.

**BOTANICAL NAME** *Spyridium vexilliferum*  
**COMMON NAME** Propeller Plant  
**ENVIRONMENTAL CONDITIONS** Well drained soils.  
**HEIGHT/SPREAD** 0.3-0.5m  
**COMMENTS** Coastal heathland plant with tiny creamy propeller-like flower heads Sep-Jan.

**BOTANICAL NAME** *Stackhousia monogyna*  
**COMMON NAME** Creamy Candles  
**ENVIRONMENTAL CONDITIONS** Moist well drained soils.  
**HEIGHT/SPREAD** 0.1-0.3m/0.1-0.3m  
**COMMENTS** Usually grows in patches, creating a massed display. Many tiny cream tubular flowers at the end of each stem Aug-Jan.

# precinct 2 anglesea district

26

**BOTANICAL NAME** Stylidium  
graminifolium

**COMMON NAME** Grass Trigger Plant  
**ENVIRONMENTAL CONDITIONS** Moist  
well drained soils, tolerating wet  
and dry periods once  
established.

**HEIGHT/SPREAD** 0.2-0.6m/0.2-0.3m

**COMMENTS** Perennial herb with  
long narrow grass like leaves  
and a slender stem bearing a  
narrow spike of pink flowers  
spring and summer.

**BOTANICAL NAME** Tetratheca ciliata

**COMMON NAME** Common Pink  
Bells

**ENVIRONMENTAL CONDITIONS** Well  
drained soil, responding to extra  
moisture in summer.

**HEIGHT/SPREAD** 0.3-0.5m/0.3-0.6m

**COMMENTS** Profuse fragrant pink  
or mauve flowers July-Dec.

**BOTANICAL NAME** Thomasia

petalocalyx

**COMMON NAME** Paper Flower

**ENVIRONMENTAL CONDITIONS** Well  
drained soils.

**HEIGHT/SPREAD** 0.3-0.5m

**COMMENTS** Bears mauve flowers  
in summer. Useful  
in regeneration projects.

**BOTANICAL NAME** Wahlenbergia

multicaulis

**COMMON NAME** Bluebells

**ENVIRONMENTAL CONDITIONS** Well  
drained soils.

**HEIGHT/SPREAD** 0.3-0.5m/0.3-0.4m

**COMMENTS** Erect slender plants  
bearing pale blue  
bell shaped flowers in early  
spring.

## Groundcovers

**BOTANICAL NAME** Acrotriche

serrulata

**COMMON NAME** Honey pots

**ENVIRONMENTAL CONDITIONS** Moist  
well drained soils tolerating dry  
periods.

**HEIGHT/SPREAD** 0.1-0.3m/0.5-1m

**COMMENTS** Slow growing, dense  
ground covering plant.  
Translucent tubular flowers with  
a honey fragrance in winter.

**BOTANICAL NAME** Bossiaea

prostrata

**COMMON NAME** Creeping Bossiaea

**ENVIRONMENTAL CONDITIONS** Well  
drained soils. Suitable in sun or  
shade.

**HEIGHT/SPREAD** Prostrate/0.5-1.5m

**COMMENTS** Prostrate, lightly  
spreading, showy yellow pea  
flowers in Spring.

**BOTANICAL NAME** Brachyscome

multifida

**COMMON NAME** Cut-leaf Daisy

**ENVIRONMENTAL CONDITIONS** Moist  
clay soils.

**HEIGHT/SPREAD** 0.1-0.4m/0.2-1m

**COMMENTS** Fast growing low  
spreading perennial. Profuse  
lilac-blue or mauve flowers in  
summer/autumn. Useful soil  
binder.

**BOTANICAL NAME** Calocephalus

lacteus

**COMMON NAME** Milky Beauty-  
heads

**ENVIRONMENTAL CONDITIONS** Well  
drained soils.

**HEIGHT/SPREAD** 0.15-0.3m/0.1-  
0.3m

**COMMENTS** Small sprawling plant  
with soft grey foliage and white  
globular flowerheads Sep-Feb.

**BOTANICAL NAME** Carpobrotus

rossii

**COMMON NAME** Karkalla

**ENVIRONMENTAL CONDITIONS** Sandy  
soil. Full sun required for  
flowers.

**HEIGHT/SPREAD** Prostrate/2-3m

**COMMENTS** Prostrate succulent  
perennial herb with thick fleshy  
leaves and pale purple to pink  
flowers on short stalks. Good  
soil binding plant. Flowers most  
of the year.

**BOTANICAL NAME** Chrysocephalum

apiculatum

**COMMON NAME** Common

Everlasting

**ENVIRONMENTAL CONDITIONS**

Widespread and variable in a  
variety of habitats.

**HEIGHT/SPREAD** 0.3m/1-2m

**COMMENTS** Perennial of the daisy  
family. Silvery foliage and  
golden flower heads which  
occur most of the year.  
Excellent rockery plant.

**BOTANICAL NAME** Dichondra repens

**COMMON NAME** Kidney Weed

**ENVIRONMENTAL CONDITIONS** Moist  
well drained soils. Shade.

**HEIGHT/SPREAD** Prostrate,  
creeping.

**COMMENTS** Matting, prostrate  
herb. Lawn substitute. Kidney  
shaped leaves with tiny cream  
flowers Sep-Dec..

**BOTANICAL NAME** Disphyma

crassifolium

**COMMON NAME** Rounded Noon-  
flower

**ENVIRONMENTAL CONDITIONS**

Adaptable to any conditions.

**HEIGHT/SPREAD** Prostrate/1-2m

**COMMENTS** Spreading perennial  
herb with succulent cylindrical  
leafy spikes of yellow and red,  
apricot or orange flowers Aug-  
Dec.

**BOTANICAL NAME** Enchylaena

tomentosa

**COMMON NAME** Ruby Saltbush

**ENVIRONMENTAL CONDITIONS**

Adaptable to any conditions.

**HEIGHT/SPREAD** Prostrate-1m/0.5-  
1m

**COMMENTS** Low spreading or  
upright woody shrub with  
succulent leaves. Attractive plant  
useful as an undershrub.  
Greenish flowers in spring –  
yellow to red berries.

**BOTANICAL NAME** Geranium

solanderi

**COMMON NAME** Austral Crane's-bill

**ENVIRONMENTAL CONDITIONS** Well

drained soils, tolerating  
moisture.

**HEIGHT/SPREAD** Prostrate 0.5m/0.6-  
1.5m

**COMMENTS** Hairy creeping  
perennial herb with pink flowers  
in spring/summer.

**BOTANICAL NAME** Gompholobium

ecostatum

**COMMON NAME** Dwarf Wedge-pea

**ENVIRONMENTAL CONDITIONS** Well  
drained soils.

**HEIGHT/SPREAD** Prostrate to 0.1m

**COMMENTS** Red, yellow or apricot  
peas in spring/summer with  
narrow bluish leaves.

**BOTANICAL NAME** Goodenia

geniculata

**COMMON NAME** Bent Goodenia

**ENVIRONMENTAL CONDITIONS** Moist  
soils.

**HEIGHT/SPREAD** 0.1-0.5m/0.1-0.5m

**COMMENTS** Perennial suckering  
matting herb. Long flowering.  
Yellow flowers. Excellent rockery  
plant.

**BOTANICAL NAME** Goodenia lanata

**COMMON NAME** Trailing Goodenia

**ENVIRONMENTAL CONDITIONS**

Tolerates extended dry periods  
once established.

**HEIGHT/SPREAD** Prostrate/0.5-1.5m

**COMMENTS** Attractive solitary  
yellow flowers on long stalks  
Oct-Dec. Trailing stems.

# precinct 2 anglesea district



27

**BOTANICAL NAME** Kennedia prostrata  
**COMMON NAME** Running Postman  
**ENVIRONMENTAL CONDITIONS** Well drained soils.  
**HEIGHT/SPREAD** Prostrate/1-2.5m  
**COMMENTS** Fast growing prostrate with very showy red pea flowers most of the year.

**BOTANICAL NAME** Lagenophera stipitata  
**COMMON NAME** Blue-bottle Daisy  
**ENVIRONMENTAL CONDITIONS** Adaptable to moist well drained soils.  
**HEIGHT/SPREAD** 0.05-0.25m high  
**COMMENTS** Small perennial herb with a slender hairy flower stalks upon which mauve flowerheads grow in summer.

**BOTANICAL NAME** Mazus pumilio  
**COMMON NAME** Swamp Mazus  
**ENVIRONMENTAL CONDITIONS** Moist to wet soil.  
**HEIGHT/SPREAD** Prostrate/0.5-1m  
**COMMENTS** Suckering mat plant with glossy leaves and solitary white or mauve flowers Oct-March.

**BOTANICAL NAME** Pelargonium australe  
**COMMON NAME** Austral Stork's-bill  
**ENVIRONMENTAL CONDITIONS** Well drained soils, tolerating dryness once established.  
**HEIGHT/SPREAD** 0.3-0.6m/0.3-1m  
**COMMENTS** Interesting rockery plant useful as a soil or sand binder. Attractive cluster of pink or white flowers Oct-Feb.

**BOTANICAL NAME** Platylobium obtusangulum  
**COMMON NAME** Common Flat-pea  
**ENVIRONMENTAL CONDITIONS** Prefers well drained soil.  
**HEIGHT/SPREAD** 0.3-0.5m/1m  
**COMMENTS** Triangular leaves and small attractive yellow and red pea flowers in spring.

**BOTANICAL NAME** Scaevola albida  
**COMMON NAME** Coast Fan-flower  
**ENVIRONMENTAL CONDITIONS** Well drained soil.  
**HEIGHT/SPREAD** 0.15-0.15m/0.5-0.75m  
**COMMENTS** Mat plant with white or bluish fan-shaped flowers most seasons.

**BOTANICAL NAME** Scutellaria humilis  
**COMMON NAME** Dwarf Skullcap  
**ENVIRONMENTAL CONDITIONS** Moist well drained soils.  
**HEIGHT/SPREAD** 0.15m/1m  
**COMMENTS** Matting plant with small mauve to pink flowers on slender stalks Oct-Feb.

**BOTANICAL NAME** Selliera radicans  
**COMMON NAME** Swampweed  
**ENVIRONMENTAL CONDITIONS** Moist to wet soils.  
**HEIGHT/SPREAD** Prostrate/0.5-1m  
**COMMENTS** Mat forming herb with shiny green leaves and fan shaped off white flowers in summer.

**BOTANICAL NAME** Swainsona lessertiifolia  
**COMMON NAME** Coast Swainson-pea  
**ENVIRONMENTAL CONDITIONS** Well drained sandy soil.  
**HEIGHT/SPREAD** 0.1-0.3m/0.4-1m  
**COMMENTS** Scrambling perennial herb with spikes of bright purple pea flowers June-Oct.

**BOTANICAL NAME** Threlkeldia diffusa  
**COMMON NAME** Coast Bonefruit  
**ENVIRONMENTAL CONDITIONS** Moist saline soils.  
**HEIGHT/SPREAD** Prostrate-0.3m/1m  
**COMMENTS** Spreading succulent perennial herb. Matting plant for coastal conditions.

**BOTANICAL NAME** Veronica gracilis  
**COMMON NAME** Slender Speedwell  
**ENVIRONMENTAL CONDITIONS** Moist well drained soils.  
**HEIGHT/SPREAD** 0.15-0.3m/1m  
**COMMENTS** Mauve to pale blue cup flowers Sept-Dec.

**BOTANICAL NAME** Viola hederacea  
**COMMON NAME** Ivy-leaf Violet  
**ENVIRONMENTAL CONDITIONS** Moist to wet soils.  
**HEIGHT/SPREAD** Prostrate, creeping.  
**COMMENTS** Fast growing herb which creates a dense mat with small white flowers most of the year.



*Dwarf She-oak*



*Blunt Everlasting*

## Grasses, Sedges, Lilies, Irises & Grasstrees

**BOTANICAL NAME** Agrostis aemula  
**COMMON NAME** Blown Grass  
**ENVIRONMENTAL CONDITIONS** Heavy clay and basalt soils.  
**HEIGHT/SPREAD** To 0.1m high.  
**COMMENTS** Compact annual tuft.

**BOTANICAL NAME** Arthropodium milleflorum  
**COMMON NAME** Pale Vanilla-lily  
**ENVIRONMENTAL CONDITIONS** Deep loamy soils.  
**HEIGHT/SPREAD** 0.3-1m/0.3m  
**COMMENTS** Slender perennial herb with narrow grass-like leaves and pale purple or pink flowers in summer. Crushed flowers smell like vanilla.

**BOTANICAL NAME** Arthropodium strictum  
**COMMON NAME** Chocolate Lily  
**ENVIRONMENTAL CONDITIONS** Well drained soils.  
**HEIGHT/SPREAD** 0.2-1m/0.2-0.8m  
**COMMENTS** Attractive and adaptable perennial shrub. Chocolate scented violet coloured flowers in spring.

**BOTANICAL NAME** Austrodanthonia geniculata  
**COMMON NAME** Knead Wallaby Grass  
**ENVIRONMENTAL CONDITIONS** Requires full sun or semi shaded positions with well drained soil.  
**HEIGHT/SPREAD** 10-40cm high  
**COMMENTS** Excellent contrast plant in landscaping.

# precinct 2

## anglesea district

28

**BOTANICAL NAME** *Austrodanthonia racemosa*

**COMMON NAME** Stiped Wallaby Grass

**ENVIRONMENTAL CONDITIONS**

Requires full sun or semi shaded positions with well drained soil.

**HEIGHT/SPREAD** 10-40cm high

**COMMENTS** Excellent contrast plant in landscaping.

**BOTANICAL NAME** *Bulbine bulbosa*

**COMMON NAME** Bulbine Lily

**ENVIRONMENTAL CONDITIONS** Grows well in moist well drained soils.

**HEIGHT/SPREAD** 0.2-0.4m

**COMMENTS** Densely tufted perennial herb with green-grey green succulent rush-like leaves. Yellow star like flowers Sept-Jan.

**BOTANICAL NAME** *Carex appressa*

**COMMON NAME** Tall sedge

**ENVIRONMENTAL CONDITIONS**

Requires ample moisture, tolerating periods of inundation.

**HEIGHT/SPREAD** 0.5-1.2m/0.5-1m

**COMMENTS** Suitable for wet areas, stabilising soil, or as an aquatic or bog garden plant.

**BOTANICAL NAME** *Carex breviculmis*

**COMMON NAME** Common Grass-sedge

**ENVIRONMENTAL CONDITIONS**

Very adaptable, from exposed slopes to moist depressions.

**HEIGHT/SPREAD** To 15cm high

**COMMENTS** Small densely tufted sedge with triangular stems.

**BOTANICAL NAME** *Chamaescilla corymbosa*

**COMMON NAME** Blue Squill

**ENVIRONMENTAL CONDITIONS** Moist soils.

**HEIGHT/SPREAD** 0.2m/0.2m

**COMMENTS** Tiny perennial herb with terminal clusters of bright blue flowers Aug-Nov. Flowers short lived.

**BOTANICAL NAME** *Dianella revoluta*

**COMMON NAME** Black-anther Flax - lily

**ENVIRONMENTAL CONDITIONS** Well drained soils. Tolerates dry soils in shade.

**HEIGHT/SPREAD** 0.3-1m/0.5-2.5m

**COMMENTS** Perennial with dark green leaves and blue flowers on branched stems in spring/summer.

**BOTANICAL NAME** *Dichelachne crinita*

**COMMON NAME** Long-hair Plume-grass

**ENVIRONMENTAL CONDITIONS** Well drained soils.

**HEIGHT/SPREAD** To 10cm high.

**COMMENTS** Ornamental grass.

**BOTANICAL NAME** *Gahnia filum*

**COMMON NAME** Chaffy Saw-sedge

**ENVIRONMENTAL CONDITIONS** Mostly sandy soils.

**HEIGHT/SPREAD** 1-2m high.

**COMMENTS** Perennial leafy tussock. Brown and chaffy flower heads.

**BOTANICAL NAME** *Gahnia sieberiana*

**COMMON NAME** Red-fruited Saw - sedge

**ENVIRONMENTAL CONDITIONS**

Tolerates moist soils for most of the year.

**HEIGHT/SPREAD** 1.5-3m/2-3m

**COMMENTS** Perennial sedge forming tussocks. Attractive strap like leaves and flower head. Important butterfly food source and habitat for small birds.

**BOTANICAL NAME** *Isolepis nodosa*

**COMMON NAME** Knobby Club-rush

**ENVIRONMENTAL CONDITIONS** Moist soils, tolerates dry and wet conditions when established.

**HEIGHT/SPREAD** 0.5-1.5m/0.6-2m

**COMMENTS** Hardy plant providing interesting contrast in landscapes. Ideal for wet areas.

**BOTANICAL NAME** *Juncus kraussii*

**COMMON NAME** Sea Rush

**ENVIRONMENTAL CONDITIONS**

Brackish to saline areas.

**HEIGHT/SPREAD** 0.6-2m/0.5-1.5m

**COMMENTS** Perennial rush with round stems.

**BOTANICAL NAME** *Juncus procerus*

**COMMON NAME** Tall Rush

**ENVIRONMENTAL CONDITIONS** Damp well drained soils.

**HEIGHT/SPREAD** 1-2m/0.6-1.5m

**COMMENTS** Soft, thick rounded hollow stems.

**BOTANICAL NAME** *Lepidosperma filiforme*

**COMMON NAME** Common Rapier-sedge

**ENVIRONMENTAL CONDITIONS**

Tolerates moist soils with full sun or dry soils in partial sun.

**HEIGHT/SPREAD** 0.5-1.5m high

**COMMENTS** Attractive erect foliage and decorative flowers

**BOTANICAL NAME** *Lepidosperma gladiatum*

**COMMON NAME** Coast Sword-sedge

**ENVIRONMENTAL CONDITIONS**

Grows well in moist sites, heavy soils in full or part sun.

**HEIGHT/SPREAD** 1-1.5m high

**COMMENTS** Attractive strappy plant ideal for feature planting.

**BOTANICAL NAME** *Lepidosperma semiteres*

**COMMON NAME** Wire Rapier-sedge

**ENVIRONMENTAL CONDITIONS** Grows well in moist sites, heavy soils in full or part sun.

**HEIGHT/SPREAD** 0.3-1m high

**COMMENTS** Attractive strappy plant ideal for feature planting.

**BOTANICAL NAME** *Lomandra filiformis*

**COMMON NAME** Wattle Mat-rush

**ENVIRONMENTAL CONDITIONS** Moist, well drained clays or sands tolerating dry shady conditions once established.

**HEIGHT/SPREAD** 0.15-0.3m/0.15-0.2m

**COMMENTS** Hardy perennial forming rush-like tufts. Flowers like tiny wattle buds in spring.

**BOTANICAL NAME** *Lomandra longifolia*

**COMMON NAME** Spiny-headed Mat-rush

**ENVIRONMENTAL CONDITIONS** Well drained soils tolerating dry shade.

**HEIGHT/SPREAD** 0.5-1m/0.5-1.2m

**COMMENTS** Hardy perennial, smooth bright green strappy leaves, scented yellowish flowers Sept-Dec.

**BOTANICAL NAME** *Lomandra multiflora*

**COMMON NAME** Many-flowered Mat-rush

**ENVIRONMENTAL CONDITIONS** Well drained soils.

**HEIGHT/SPREAD** 0.2-0.5m/0.15-0.2m

**COMMENTS** Stiff heathland plant, strap like leaves. Attractive purple/yellow flowers in spring.

**BOTANICAL NAME** *Microlaena stipoides*

**COMMON NAME** Weeping Grass

**ENVIRONMENTAL CONDITIONS** Moist well drained soils.

**HEIGHT/SPREAD** 0.3m/0.6m

**COMMENTS** Native grass with delicate arching form. Good for a lawn substitute in shady areas.



# precinct 2 anglesea district



29

**BOTANICAL NAME** Patersonia fragilis  
**COMMON NAME** Short Purple flag  
**ENVIRONMENTAL CONDITIONS**  
Tolerates inundation for short periods.  
**HEIGHT/SPREAD** 0.1-0.2m/0.4m  
**COMMENTS** Attractive plant in rocky landscape. Purple flowers on short stems in spring/summer.

**BOTANICAL NAME** Patersonia occidentalis  
**COMMON NAME** Long Purple-flag  
**ENVIRONMENTAL CONDITIONS**  
Tolerates inundation in winter and drying out in summer.  
**HEIGHT/SPREAD** 0.2-0.4m/0.3-0.6m  
**COMMENTS** Attractive plant suitable for bog gardens or pond edges but also tolerant of dry positions in late spring/summer.

**BOTANICAL NAME** Poa labillardierei  
**COMMON NAME** Common Tussock Grass  
**ENVIRONMENTAL CONDITIONS** Well drained soils.  
**HEIGHT/SPREAD** 0.2-0.9m/0.7-1m  
**COMMENTS** Densely forming perennial tussock grasses with soft graceful form suiting many landscape styles.

**BOTANICAL NAME** Poa poiiformis  
**COMMON NAME** Blue Tussock Grass  
**ENVIRONMENTAL CONDITIONS** Well drained soils.  
**HEIGHT/SPREAD** 0.2-0.9m/0.7-1m  
**COMMENTS** Densely forming perennial tussock grasses with soft graceful form suiting many landscape styles.

**BOTANICAL NAME** Spinifex sericeus  
**COMMON NAME** Spinifex  
**ENVIRONMENTAL CONDITIONS**  
Excellent drainage in sandy soil.  
**HEIGHT/SPREAD** To 50cm high.  
**COMMENTS** Strong perennial grass with long creeping stolons. Ideal for stabilising sandy soil.

**BOTANICAL NAME** Thelionema caespitosum  
**COMMON NAME** Tufted Blue Lily  
**ENVIRONMENTAL CONDITIONS** Moist soils.  
**HEIGHT/SPREAD** 0.2-0.6m/0.3-0.6m  
**COMMENTS** Herbaceous perennial, blue but usually white star shaped flowers on wiry stems Sept-Jan.

**BOTANICAL NAME** Themeda triandra  
**COMMON NAME** Kangaroo Grass  
**ENVIRONMENTAL CONDITIONS**  
Adaptable to most soils which do not remain wet.  
**HEIGHT/SPREAD** 0.4-0.9m/0.7m  
**COMMENTS** Perennial tussock with attractive green/purple foliage and drooping "paw" like flower heads.

**BOTANICAL NAME** Xanthorrhoea australis  
**COMMON NAME** Austral Grass-tree  
**ENVIRONMENTAL CONDITIONS** Well drained soils, tolerating dry conditions once established.  
**HEIGHT/SPREAD** 1-3m  
**COMMENTS** Attractive slow growing perennial plant with thick woody trunk surrounded by grassy tuft of leaves. Usually flowers only after fire.

**BOTANICAL NAME** Xanthorrhoea minor  
**COMMON NAME** Small Grass-tree  
**ENVIRONMENTAL CONDITIONS** Well drained soils, tolerating dry conditions once established.  
**HEIGHT/SPREAD** 0.6m/1m  
**COMMENTS** Attractive slow growing perennial with a subterranean woody trunk. Cream flowers in spring.

## Climbers & Scramblers

**BOTANICAL NAME** Billardiera scandens  
**COMMON NAME** Climbing/Common Appleberry  
**ENVIRONMENTAL CONDITIONS** Well drained dry to moist soil.  
**HEIGHT/SPREAD** Climber  
**COMMENTS** Soft climber with greenish-yellow tubular flowers throughout the year.

**BOTANICAL NAME** Clematis aristata  
**COMMON NAME** Mountain Clematis  
**ENVIRONMENTAL CONDITIONS** Moist soil with shade.  
**HEIGHT/SPREAD** Climber  
**COMMENTS** Vigorous climber, masses of creamy white starry flowers Aug-March.

**BOTANICAL NAME** Clematis microphylla  
**COMMON NAME** Small-leaved Clematis  
**ENVIRONMENTAL CONDITIONS** Well drained soil.  
**HEIGHT/SPREAD** Climber  
**COMMENTS** Climber with dull green leaves and masses of creamy starry flowers July-Nov.

**BOTANICAL NAME** Glycine clandestina  
**COMMON NAME** Twining Glycine  
**ENVIRONMENTAL CONDITIONS** Moist well drained soil, tolerating dry conditions once established.  
**HEIGHT/SPREAD** Twining 0.3-2m tall  
**COMMENTS** Slender open twiner with delicate bluish-mauve pea flowers Oct-Jan.

**BOTANICAL NAME** Muehlenbeckia adpressa  
**COMMON NAME** Climbing Lignum  
**ENVIRONMENTAL CONDITIONS** Well drained sandy soil.  
**HEIGHT/SPREAD** Climber  
**COMMENTS** Perennial with small greenish-yellow flowers Sept-Dec. Good for fences and retaining walls, tolerates salt exposure and dryness.

**BOTANICAL NAME** Tetragonia implexicoma  
**COMMON NAME** Bower Spinach  
**ENVIRONMENTAL CONDITIONS** Well drained sandy soil. Tolerates dry soil with shade.  
**HEIGHT/SPREAD** 0.3/2m  
**COMMENTS** Succulent plant suitable for sandy soils/dunes.

**BOTANICAL NAME** Zygophyllum billardieri  
**COMMON NAME** Coast Twin-leaf  
**ENVIRONMENTAL CONDITIONS** Sandy well drained soil tolerating dry periods.  
**HEIGHT/SPREAD** 0.3-0.6/1m  
**COMMENTS** Fire retardant. Suitable for exposed coastal conditions. Attractive bright yellow flowers most of year.



Blue Squill

# anglesea district summary

30

## Botanical Name

Acacia acinacea  
Acacia dealbata  
Acacia genistifolia  
Acacia mearnsii  
Acacia melanoxylon  
Acacia mucronata  
Acacia myrtifolia  
Acacia paradoxa  
Acacia pycnantha  
Acacia stricta  
Acacia suaveolens  
Acacia verniciflua  
Acacia verticillata  
Acrotriche serrulata  
Agrostis aemula  
Allocasuarina littoralis  
Allocasuarina misera  
Allocasuarina paludosa  
Allocasuarina verticillata  
Alyxia buxifolia  
Amperea xiphoclada  
Aotus ericoides  
Argentipallium obtusifolium  
Arthropodium milleflorum  
Arthropodium strictum  
Austrodanthonia geniculata  
Austrodanthonia racemosa  
Banksia marginata  
Billardiera scandens  
Bossiaea cinerea  
Bossiaea prostrata  
Brachyscome multifida  
Brunonia australis  
Bulbine bulbosa  
Bursaria spinosa  
Calocephalus lacteus  
Calytrix tetragona  
Carex appressa  
Carex breviculmis  
Carpobrotus rossii  
Cassinia aculeata  
Cassinia longifolia  
Chamaescilla corymbosa  
Chrysocephalum apiculatum

## Common Name

Gold-dust Wattle  
Silver Wattle  
Spreading Wattle  
Black Wattle  
Blackwood  
Narrow-leaf Wattle  
Myrtle Wattle  
Hedge Wattle  
Golden Wattle  
Hop Wattle  
Sweet Wattle  
Varnish Wattle  
Prickly Moses  
Honey pots  
Blown Grass  
Black Sheoak  
Dwarf Sheoak  
Scrub Sheoak  
Drooping Sheoak  
Sea Box  
Broom Spurge  
Common Aotus  
Blunt Everlasting  
Pale Vanilla-lily  
Chocolate Lily  
Kneed Wallaby Grass  
Stiped Wallaby Grass  
Silver Banksia  
Climbing/Common Appleberry  
Showy Bossiaea  
Creeping Bossiaea  
Cut-leaf Daisy  
Blue Pincushion  
Bulbine Lily  
Sweet Bursaria  
Milky Beauty-heads  
Fringe Myrtle  
Tall sedge  
Common Grass-sedge  
Karkalla  
Common Cassinia  
Shiny Cassinia  
Blue Squill  
Common Everlasting

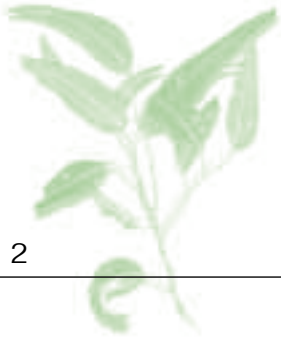
Chrysocephalum semipapposum  
Clematis aristata  
Clematis microphylla  
Coprosma quadrifida  
Correa alba  
Correa reflexa  
Cynoglossum suaveolens  
Daviesia latifolia  
Dianella revoluta  
Dichelachne crinita  
Dichondra repens  
Dillwynia cinerascens  
Dillwynia glaberrima  
Disphyma crassifolium  
Enchylaena tomentosa  
Epacris impressa  
Eucalyptus aff. cypellocarpa  
(Anglesea)  
Eucalyptus baxteri  
Eucalyptus cypellocarpa  
Eucalyptus globulus ssp globulus  
Eucalyptus obliqua  
Eucalyptus ovata  
Eucalyptus radiata  
Eucalyptus tricarpa  
Eucalyptus viminalis  
Eucalyptus willisii  
Gahnia filum  
Gahnia sieberiana  
Geranium solanderi  
Glycine clandestina  
Gompholobium ecostatum  
Goodenia geniculata  
Goodenia lanata  
Goodenia ovata  
Goodia lotifolia  
Grevillea infecunda  
Gynatrix pulchella  
Hakea decurrens  
Hakea repullans  
Hakea ulicina  
Helichrysum scorpioides  
Hibbertia fasciculata  
Hibbertia riparia  
Hibbertia sericea  
Clustered Everlasting  
Mountain Clematis  
Small-leaved Clematis  
Prickly Currant-bush  
White Correa  
Common Correa  
Sweet Hound's-tongue  
Hop Bitter-pea  
Black-anther Flax -lily  
Long-hair Plume-grass  
Kidney Weed  
Grey Parrot Pea  
Heath/Smooth Parrot Pea  
Rounded Noon-flower  
Ruby Saltbush  
Common Heath  
Otway Grey Gum  
Brown Stringybark  
Mountain Grey Gum  
Southern Blue Gum  
Messmate Stringybark  
Swamp Gum  
Narrow-leaf Peppermint  
Red Ironbark  
Manna Gum  
Shining Peppermint  
Chaffy Saw-sedge  
Red-fruited Saw -sedge  
Austral Crane's-bill  
Twining Glycine  
Dwarf Wedge-pea  
Bent Goodenia  
Trailing Goodenia  
Hop Goodenia  
Golden-tip  
Anglesea Grevillea  
Hemp Bush  
Needle Hakea  
Western Furze Hakea  
Furze Hakea  
Button Everlasting  
Bundled Guinea-flower  
Erect Guinea-flower  
Silky Guinea-flower

# anglesea district summary



3 1

<i>Hovea heterophylla</i>	Common Hovea	<i>Pimelea humilis</i>	Common Rice-flower
<i>Indigofera australis</i>	Austral Indigo	<i>Pimelea linifolia</i>	Slender Rice-flower
<i>Isolepis nodosa</i>	Knobby Club-rush	<i>Pimelea octophylla</i>	Woolly Rice-flower
<i>Isopogon ceratophyllus</i>	Horny Cone-bush	<i>Pimelea serpyllifolia</i>	Thyme Rice-flower
<i>Juncus kraussii</i>	Sea Rush	<i>Platylobium obtusangulum</i>	Common Flat-pea
<i>Juncus procerus</i>	Tall Rush	<i>Poa labillardierei</i>	Common Tussock Grass
<i>Kennedia prostrata</i>	Running Postman	<i>Poa poiformis</i>	Blue Tussock Grass
<i>Lagenophera stipitata</i>	Blue-bottle Daisy	<i>Podolepis jaceoides</i>	Showy Podolepis
<i>Lasiopetalum baueri</i>	Velvet Bush	<i>Pomaderris aspera</i>	Hazel Pomaderris
<i>Lepidosperma filiforme</i>	Common Rapier-sedge	<i>Pomaderris ferruginea</i>	Rusty Pomaderris
<i>Lepidosperma gladiatum</i>	Coast Sword-sedge	<i>Pomaderris ssp paralia</i>	Coast Pomaderris
<i>Lepidosperma semiteres</i>	Wire Rapier-sedge	<i>Prostanthera lasianthos</i>	Christmas Bush
<i>Leptorhynchus squamatus</i>	Scaly Buttons	<i>Prostanthera nivea</i>	Snowy Mint bush
<i>Leptorhynchus tenuifolius</i>	Wiry Buttons	<i>Pultenaea daphnoides</i>	Large leaf Bush pea
<i>Leptospermum continentale</i>	Prickly Tea-tree	<i>Pultenaea mollis</i>	Soft Bush-pea
<i>Leptospermum lanigerum</i>	Woolly Tea tree	<i>Pultenaea scabra</i>	Rough Bush-pea
<i>Leptospermum myrsinoides</i>	Heath (silky) Tea-tree	<i>Rhagodia candolleana</i>	Seaberry Saltbush
<i>Leucophyta brownii</i>	Cushion Bush	<i>Scaevola albida</i>	Coast Fan-flower
<i>Leucopogon parviflorus</i>	Coast Beard Heath	<i>Scutellaria humilis</i>	Dwarf Skullcap
<i>Lomandra filiformis</i>	Wattle Mat-rush	<i>Selliera radicans</i>	Swampweed
<i>Lomandra longifolia</i>	Spiny-headed Mat-rush	<i>Solanum laciniatum</i>	Kangaroo Apple
<i>Lomandra multiflora</i>	Many-flowered Mat-rush	<i>Sphaerobolium vimineum</i>	Leafless Globe-pea
<i>Mazus pumilio</i>	Swamp Mazus	<i>Spinifex sericeus</i>	Spinifex
<i>Melaleuca lanceolata</i>	Moonah	<i>Spyridium parvifolium</i>	Dusty Miller
<i>Melaleuca squarrosa</i>	Scented paperbark	<i>Spyridium vexilliferum</i>	Propeller Plant
<i>Microlaena stipoides</i>	Weeping Grass	<i>Stackhousia monogyna</i>	Creamy Candles
<i>Microseris lanceolata</i>	Yam Daisy	<i>Stylidium graminifolium</i>	Grass Trigger Plant
<i>Muehlenbeckia adpressa</i>	Climbing Lignum	<i>Swainsona lessertiifolia</i>	Coast Swainson-pea
<i>Myoporum insulare</i>	Common Boobialla	<i>Tetragonia implexicoma</i>	Bower Spinach
<i>Myoporum sp</i>	Sticky Boobialla	<i>Tetratheca ciliata</i>	Common Pink Bells
<i>Olearia argophylla</i>	Musk Daisy-bush	<i>Thelionema caespitosum</i>	Tufted Blue Lily
<i>Olearia axillaris</i>	Coast Daisy Bush	<i>Themeda triandra</i>	Kangaroo Grass
<i>Olearia lirata</i>	Snow Daisy-bush	<i>Thomasia petalocalyx</i>	Paper Flower
<i>Olearia phlogopappa</i>	Dusty Daisy-bush	<i>Threlkeldia diffusa</i>	Coast Bonefruit
<i>Olearia ramulosa</i>	Twiggy Daisy Bush	<i>Veronica gracilis</i>	Slender Speedwell
<i>Olearia teretifolia</i>	Cypress Daisy-bush	<i>Viminaria juncea</i>	Golden Spray
<i>Ozothamnus ferrugineus</i>	Tree Everlasting	<i>Viola hederacea</i>	Ivy-leaf Violet
<i>Ozothamnus rosmarinifolius</i>	Rosemary Everlasting	<i>Wahlenbergia multicaulis</i>	Bluebells
<i>Ozothamnus turbinatus</i>	Coast Everlasting	<i>Xanthorrhoea australis</i>	Austral Grass-tree
<i>Patersonia fragilis</i>	Short Purple flag	<i>Xanthorrhoea minor</i>	Small Grass-tree
<i>Patersonia occidentalis</i>	Long Purple-flag	<i>Zygophyllum billardieri</i>	Coast Twin-leaf
<i>Pelargonium australe</i>	Austral Stork's-bill		
<i>Persoonia juniperina</i>	Prickly Geebung		
<i>Phyllanthus hirtellus</i>	Thyme Spurge		
<i>Pimelea glauca</i>	Smooth Rice-flower		



**Legend**  
 Urban Planting Guide  
 Rural Planting Guide



27 GARDENERS ROAD  
 PO BOX 276  
 TORQUAY VIC 3238  
 AUSTRALIA 5239  
 PHONE +61 3 526 4000  
 FAX +61 3 526 4227  
 EMAIL [info@surfcoast.vic.gov.au](mailto:info@surfcoast.vic.gov.au)  
 WEB [www.surfcoast.vic.gov.au](http://www.surfcoast.vic.gov.au)

The Surf Coast Shire Council is pleased to announce that this guide is not without its own limitations and despite the best of efforts, the council does not accept any liability for any errors or omissions which may arise from the application of this guide.

### Precinct 3 : Lorne



Not to Scale



17/03/2003

Created by: F:\BAM2\Network\Support\2003\CDMP\Workshop\External\03\_Precinct\_3.doc



# precinct 3 lorne



33

The township of Lorne is surrounded by Shrubby Foothill Forest, Grassy Dry Forest and Shrubby Wet Forest. The deep soils allow higher growth of canopy trees than that seen in the other precincts. As a result the overstorey is dominated by tall Messmate, with Mountain Grey Gum also common. Scentbark, Brown Stringybark, Blue Gum, Swamp Gum, Narrow-leaf Peppermint, Mountain Ash, and Manna Gum are occasional. Shrubs include Hop Goodenia, Prickly Moses, Snow Daisy Bush, Prickly Currant-bush, Narrow-leaf Wattle, Prickly Tea-tree, Hazel Pomaderris and Large-leaf Bush-pea. The ground stratum often lacks diversity and is dominated by Austral Bracken and Forest Wire-grass.

Grassy Dry Forest occurs in an area west of Lorne where soils are shallow and rocky and have a higher iron content than soils of the Shrubby Foothill Forest. Grassy Dry Forest is confined to northern and western aspects on gentle to moderately steep slopes and ridges.

The overstorey is a low forest dominated by Scentbark, Blue Gum and Mountain Grey Gum. The shrub layer is low in diversity and sparse, except in areas affected by the 1983 wildfires, which are dominated by dense stands of Hop Wattle and Hop Goodenia.

Shrubby Wet Forest occupies western and northern aspects and ridgelines. This vegetation community has rough and soft

tree ferns and a good diversity of herbs due to increased light reaching the forest floor. The overstorey is a tall forest dominated by Messmate, Mountain Grey Gum and Manna Gum. Blackwood and Hazel Pomaderris form a lower tree layer. The tall shrub layer is dominated by Prickly Currant-bush, Musk Daisy-bush, Snow Daisy-bush, Tree Everlasting and Austral Mulberry. Prickly Moses and Hop Goodenia form a mid shrub layer. Varnish Wattle, Balm Mint-bush and Dusty Miller also commonly occur. The ground layer includes Ivy-leaf Violet, Mountain Clematis and Tall Sword-sedge.



*Horny Cone-bush*

# precinct 3 lorne

3 4

## Tall Trees

**BOTANICAL NAME** Eucalyptus aromaphloia  
**COMMON NAME** Scentbark  
**ENVIRONMENTAL CONDITIONS** Moist loams, tolerating wet periods but not inundation.  
**HEIGHT/SPREAD** 12-20m/7-15m  
**COMMENTS** Large shade tree. Bark aromatic when crushed.

**BOTANICAL NAME** Eucalyptus baxteri  
**COMMON NAME** Brown Stringybark  
**ENVIRONMENTAL CONDITIONS** Well drained damp soil.  
**HEIGHT/SPREAD** 15-40m/4-20m  
**COMMENTS** Good shade and shelter tree.

**BOTANICAL NAME** Eucalyptus cypellocarpa  
**COMMON NAME** Mountain Grey Gum  
**ENVIRONMENTAL CONDITIONS** Adaptable to most conditions.  
**HEIGHT/SPREAD** 10-40m/10-15m  
**COMMENTS** Upright tree with dense canopy - growth is stunted in drier soils.

**BOTANICAL NAME** Eucalyptus globulus ssp globulus  
**COMMON NAME** Southern Blue Gum  
**ENVIRONMENTAL CONDITIONS** Prefers deeper, well drained soil.  
**HEIGHT/SPREAD** 25-40m/10-15m  
**COMMENTS** Fast growing tall tree with large crown. Long, dark green leaves with eucalyptus aroma.

**BOTANICAL NAME** Eucalyptus obliqua  
**COMMON NAME** Messmate Stringybark  
**ENVIRONMENTAL CONDITIONS** Moist well drained soil, tolerating short dry periods.  
**HEIGHT/SPREAD** 5-30m/6-20m  
**COMMENTS** Excellent shade and shelter tree for larger areas.

**BOTANICAL NAME** Eucalyptus ovata  
**COMMON NAME** Swamp Gum  
**ENVIRONMENTAL CONDITIONS** Prefers moist soil, tolerates inundation during winter and dryness in summer.  
**HEIGHT/SPREAD** 6-20m/6-10m  
**COMMENTS** Fast growing densely crowned tree. Good for providing shade.

**BOTANICAL NAME** Eucalyptus radiata  
**COMMON NAME** Narrow-leaf Peppermint  
**ENVIRONMENTAL CONDITIONS** Well drained soil.  
**HEIGHT/SPREAD** 6-40m/6-20m  
**COMMENTS** Fine textured bark and narrow leaves.

**BOTANICAL NAME** Eucalyptus viminalis  
**COMMON NAME** Manna Gum  
**ENVIRONMENTAL CONDITIONS** Adaptable to a wide range of soils, but will grow better on deeper soil.  
**HEIGHT/SPREAD** 10-40m/8-15m  
**COMMENTS** Fast growing tree used as a food source by koalas.

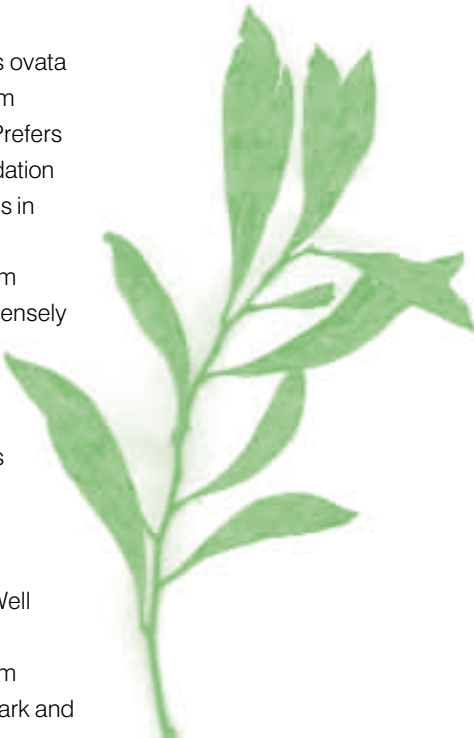
**BOTANICAL NAME** Eucalyptus willisii  
**COMMON NAME** Shining Peppermint  
**ENVIRONMENTAL CONDITIONS** Prefers drier conditions.  
**HEIGHT/SPREAD** 2-10m/4m  
**COMMENTS** Small tree with fibrous bark on lower trunk. Masses of small cream flowers in spring.

## Trees

**BOTANICAL NAME** Acacia dealbata  
**COMMON NAME** Silver Wattle  
**ENVIRONMENTAL CONDITIONS** Prefers deep, moist soil. Full to shaded sun.  
**HEIGHT/SPREAD** 2-30m/5-10m  
**COMMENTS** Fast growing open tree with bluish green feathery-like leaves, flowering in profuse yellow balls July-Oct.

**BOTANICAL NAME** Acacia mearnsii  
**COMMON NAME** Black Wattle  
**ENVIRONMENTAL CONDITIONS** Prefers well drained soil. Will grow under harsh conditions.  
**HEIGHT/SPREAD** 5-15m/6-10m  
**COMMENTS** Fast growing, short lived (15yrs) wattle with dark green feathery-like (bipinnate) foliage and strongly scented pale yellow flowers Sept-Dec.

**BOTANICAL NAME** Acacia melanoxylon  
**COMMON NAME** Blackwood  
**ENVIRONMENTAL CONDITIONS** Tolerates a wide range of soils, but prefers deep, moist soil.  
**HEIGHT/SPREAD** 6-30m/4-15m  
**COMMENTS** Long lived wattle suited to screening and wind breaks. Dense green foliage and pale creamy flowers July-Oct.





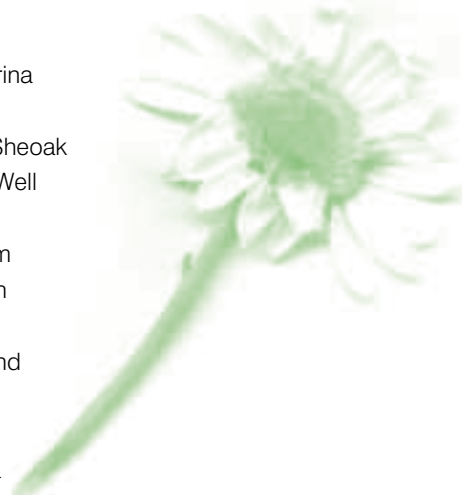
**BOTANICAL NAME** *Acacia pycnantha*  
**COMMON NAME** Golden Wattle  
**ENVIRONMENTAL CONDITIONS** Grows well on heavy and light soils, prefers well drained soils.  
**HEIGHT/SPREAD** 3-8m/2-5m  
**COMMENTS** Hardy, quick growing, large, leathery dark green leaves (phyllodes). Good for screening, windbreaks and erosion control. Large golden yellow flowers Jul-Oct

**BOTANICAL NAME** *Allocasuarina verticillata*  
**COMMON NAME** Drooping Sheoak  
**ENVIRONMENTAL CONDITIONS** Well drained soil.  
**HEIGHT/SPREAD** 4-10m/3-6m  
**COMMENTS** Hardy tree with drooping greyish-green branchlets. Good for wind break.

**BOTANICAL NAME** *Bedfordia arborescens*  
**COMMON NAME** Blanket Leaf  
**ENVIRONMENTAL CONDITIONS** Deep well drained moist soil.  
**HEIGHT/SPREAD** 3-7m/2-4m  
**COMMENTS** Tall shrub or small spreading open tree. Has fire resistant properties.

**BOTANICAL NAME** *Hedycarya augustifolia*  
**COMMON NAME** Austral Mulberry  
**ENVIRONMENTAL CONDITIONS** Rich, moist, well drained soil.  
**HEIGHT/SPREAD** 3-6m/4m  
**COMMENTS** Slender large shrub or small tree with fire resistant properties.

**BOTANICAL NAME** *Pomaderris aspera*  
**COMMON NAME** Hazel Pomaderris  
**ENVIRONMENTAL CONDITIONS** Moist well drained soil.  
**HEIGHT/SPREAD** 3-8m/2-4m  
**COMMENTS** Slender leafy shrub or small tree. Creamy green flowers in summer.



## Tall Shrubs 2.5 - 6 metres

**BOTANICAL NAME** *Acacia mucronata*  
**COMMON NAME** Narrow-leaf Wattle  
**ENVIRONMENTAL CONDITIONS** Moist well drained soil.  
**HEIGHT/SPREAD** 2-6m/2-5m  
**COMMENTS** Good screen plant requiring pruning. Drought resistant.

**BOTANICAL NAME** *Acacia stricta*  
**COMMON NAME** Hop Wattle  
**ENVIRONMENTAL CONDITIONS** Reliable in most soils.  
**HEIGHT/SPREAD** 2-5m/2-4m  
**COMMENTS** Quick growing medium plant. Drought hardy. Yellow flowers.

**BOTANICAL NAME** *Acacia verniciflua*  
**COMMON NAME** Varnish Wattle  
**ENVIRONMENTAL CONDITIONS** Tolerates wet and dry soil.  
**HEIGHT/SPREAD** 2-4m/3-5m  
**COMMENTS** Quick growing light screening plant with profuse golden balls in spring.

**BOTANICAL NAME** *Acacia verticillata*  
**COMMON NAME** Prickly Moses  
**ENVIRONMENTAL CONDITIONS** Tolerates most conditions and withstands periods of waterlogging.  
**HEIGHT/SPREAD** 2-5m/3-5m  
**COMMENTS** Low shrub to open tree with prickly leaves. Excellent bird habitat. Bright yellow flowers June-Dec.

**BOTANICAL NAME** *Banksia marginata*  
**COMMON NAME** Silver Banksia  
**ENVIRONMENTAL CONDITIONS** Common on a wide variety of sites and soils, but prefers good drainage. Tolerates soils wet in winter and dry in summer.  
**HEIGHT/SPREAD** 2.5-6m/1-5m  
**COMMENTS** Low shrub in heathlands to small tree in open forests. Excellent screening plant. Stiff dark green leaves. Honey coloured flowers Oct-June. Attractive to birds.

**BOTANICAL NAME** *Bursaria spinosa*  
**COMMON NAME** Sweet Bursaria  
**ENVIRONMENTAL CONDITIONS** Prefers well drained soil.  
**HEIGHT/SPREAD** 2-6m/2-3m  
**COMMENTS** Prickly shrub with creamy fragrant flowers Dec-March. Important nectar source for birds and insects. Bundles of brown seed pods in autumn.

**BOTANICAL NAME** *Cassinia aculeata*  
**COMMON NAME** Common Cassinia  
**ENVIRONMENTAL CONDITIONS** Easily grown in an range of well drained soils and positions.  
**HEIGHT/SPREAD** 2-4m/1-2m  
**COMMENTS** Bushy shrub with a spreading habit. Small white flower heads borne in large, dense clusters at the end of branchlets Nov-March.

# precinct 3 lorne

36

**BOTANICAL NAME** Coprosma quadrifida

**COMMON NAME** Prickly Currant-bush

**ENVIRONMENTAL CONDITIONS** Moist well drained soil.

**HEIGHT/SPREAD** 2-4m/1-1.5m

**COMMENTS** Open, upright spiny shrub. Small green leaves and reddish-orange berries.

**BOTANICAL NAME** Gynatrix pulchella

**COMMON NAME** Hemp Bush

**ENVIRONMENTAL CONDITIONS** Well drained moist soil.

**HEIGHT/SPREAD** 2-4m/1.5-3m

**COMMENTS** Soft leaved small shrub with hairy heart shaped leaves. Panicles of fragrant small greenish-white flowers Aug-Oct.

**BOTANICAL NAME** Leptospermum continentale

**COMMON NAME** Prickly Tea-tree

**ENVIRONMENTAL CONDITIONS**

Adaptable, tolerates moisture.

**HEIGHT/SPREAD** 2.5-4m/1-2m

**COMMENTS** Hardy plant which is great for screening. Masses of white flowers Oct-March.

**BOTANICAL NAME** Leptospermum scoparium

**COMMON NAME** Manuka

**ENVIRONMENTAL CONDITIONS** Dry sites.

**HEIGHT/SPREAD** To 5m tall

**COMMENTS** Variable plant with dense dark green prickly foliage and white flowers.

**BOTANICAL NAME** Leucopogon parviflorus

**COMMON NAME** Coast Beard Heath

**ENVIRONMENTAL CONDITIONS** Well drained sandy soil.

**HEIGHT/SPREAD** 2.5-4m/2-3m

**COMMENTS** Shrub to small tree with masses of densely bearded white flowers July-Nov. Berries attract birds. Slow growing.

**BOTANICAL NAME** Myoporum insulare

**COMMON NAME** Common Boobialla

**ENVIRONMENTAL CONDITIONS** Highly adaptable plant, although prefers sun and well drained soil.

**HEIGHT/SPREAD** 2.5-6m/3m

**COMMENTS** Fire retardant. Large rounded shrub, dense foliage, smooth, thick dark green leaves, white flowers with purple spots in spring. Good screening and hedging plant, salt tolerant.

**BOTANICAL NAME** Ozothamnus ferrugineus

**COMMON NAME** Tree Everlasting

**ENVIRONMENTAL CONDITIONS** Prefers moist, well drained soil.

**HEIGHT/SPREAD** 2-6m/1-3m

**COMMENTS** Shrub to small tree. Narrow dark green leaves and white flower clusters Nov-Feb.

**BOTANICAL NAME** Prostanthera lasianthos

**COMMON NAME** Christmas Bush

**ENVIRONMENTAL CONDITIONS** Moist well drained soil.

**HEIGHT/SPREAD** 2-6m/2-4m

**COMMENTS** Spectacular tree in flower. Useful as a screen plant if protected from strong winds.

**BOTANICAL NAME** Solanum laciniatum

**COMMON NAME** Kangaroo Apple

**ENVIRONMENTAL CONDITIONS** Well drained soil.

**HEIGHT/SPREAD** 2-3m/1-3m

**COMMENTS** Bluish to purple flowers Sept-March. Orange-yellow fruit when ripe. Fruit may be poisonous if eaten when green.

## Medium Shrubs 1 - 3 metres

**BOTANICAL NAME** Acacia myrtifolia

**COMMON NAME** Myrtle Wattle

**ENVIRONMENTAL CONDITIONS** Suits most soils.

**HEIGHT/SPREAD** 1-3m/1-2m

**COMMENTS** Fast growing ornamental bush with reddish stems, good for low screening. Profuse flowering in spring.

**BOTANICAL NAME** Alyxia buxifolia

**COMMON NAME** Sea Box

**ENVIRONMENTAL CONDITIONS** Well drained soils.

**HEIGHT/SPREAD** 1-2m/1-3m

**COMMENTS** Dark green hard leaved low shrub. Produces white flowers and red fruit.

**BOTANICAL NAME** Correa alba

**COMMON NAME** White Correa

**ENVIRONMENTAL CONDITIONS** Well drained soils, tolerating moisture or extended dry periods.

**HEIGHT/SPREAD** 0.5-2m/1-3m

**COMMENTS** A useful plant for soil binding or as a low screen. Waxy star shaped flowers most of the year.

**BOTANICAL NAME** Correa reflexa

**COMMON NAME** Common Correa

**ENVIRONMENTAL CONDITIONS** Well drained soil.

**HEIGHT/SPREAD** 0.3-2m/1-2m

**COMMENTS** Medium sized shrub with light green or green/red bells March-Sept. Excellent plant for dry shady positions.







**BOTANICAL NAME** Goodenia ovata  
**COMMON NAME** Hop Goodenia  
**ENVIRONMENTAL CONDITIONS** Grows in any situation. Tolerates waterlogging.  
**HEIGHT/SPREAD** 1-2.5m/1-3m  
**COMMENTS** Green leaves, bright yellow flowers spring to summer.

**BOTANICAL NAME** Indigofera australis  
**COMMON NAME** Austral Indigo  
**ENVIRONMENTAL CONDITIONS** Grows rapidly in a moist, sheltered position.  
**HEIGHT/SPREAD** 0.5-2m  
**COMMENTS** Open shrub with long slender branches with soft bluish green feather-like leaves. Attractive pink to mauve pea flowers in racemes Sept-Dec.

**BOTANICAL NAME** Myoporum sp  
**COMMON NAME** Sticky Boobialla  
**ENVIRONMENTAL CONDITIONS** Well drained dry soils.  
**HEIGHT/SPREAD** 0.5-2m/1.5-2m  
**COMMENTS** Coastal or dry areas, tolerating exposed or salty conditions.

**BOTANICAL NAME** Olearia axillaris  
**COMMON NAME** Coast Daisy-Bush  
**ENVIRONMENTAL CONDITIONS** Well drained dry sandy soil. Full sun.  
**HEIGHT/SPREAD** 1-2m/1-2m  
**COMMENTS** Attractive flowering plant with aromatic leaves and yellow daisy flowers Feb-April.

**BOTANICAL NAME** Olearia lirata  
**COMMON NAME** Snow Daisy-bush  
**ENVIRONMENTAL CONDITIONS** Moist well drained soil.  
**HEIGHT/SPREAD** 2-5m/2-3m  
**COMMENTS** Soft open shrub.

**BOTANICAL NAME** Olearia phlogopappa  
**COMMON NAME** Dusty Daisy-bush  
**ENVIRONMENTAL CONDITIONS** Well drained soils.  
**HEIGHT/SPREAD** 1-3m/1-2m  
**COMMENTS** Shrub with an open to dense habit, masses of white daisy flower heads in large clusters.

**BOTANICAL NAME** Pimelea ligustrina  
**COMMON NAME** Tall Rice-flower  
**ENVIRONMENTAL CONDITIONS** Moist well drained soil.  
**HEIGHT/SPREAD** 0.5-2.5m/1-1.5m  
**COMMENTS** Slender or bushy upright shrub. Showy shrub for moist sheltered position.

**BOTANICAL NAME** Prostanthera melissifolia  
**COMMON NAME** Balm Mint-bush  
**ENVIRONMENTAL CONDITIONS** Moist well drained soils, sheltered position.  
**HEIGHT/SPREAD** 1-3m/2-3m  
**COMMENTS** Fast growing shrub with aromatic dark green leaves. Attractive mauve flowers Oct-Dec.

**BOTANICAL NAME** Pultenaea daphnoides  
**COMMON NAME** Large leaf Bush pea  
**ENVIRONMENTAL CONDITIONS** Well drained soils.  
**HEIGHT/SPREAD** 1-3m/0.5-2m  
**COMMENTS** Attractive shrub with large yellow and red pea flowers.

**BOTANICAL NAME** Spyridium parvifolium  
**COMMON NAME** Dusty Miller  
**ENVIRONMENTAL CONDITIONS** Well drained soils.  
**HEIGHT/SPREAD** 1-3m/1-2m  
**COMMENTS** Shrub good for providing screen in dry, shady areas. Small white flowers are surrounded by dusty-white floral leaves July-Nov.



*Common Correa*

## Low plants to 1 metre high

**BOTANICAL NAME** Epacris impressa  
**COMMON NAME** Common Heath  
**ENVIRONMENTAL CONDITIONS** Moist well drained soil, tolerating limited wet or dry periods once established.  
**HEIGHT/SPREAD** 0.5-1m/0.2-0.6m  
**COMMENTS** Floral emblem of Victoria. Open, wiry shrub with attractive pink or white flowers March-Nov. Good rockery plant, particularly when planted in groups.

**BOTANICAL NAME** Gonocarpus tetragynus  
**COMMON NAME** Common Raspwort  
**ENVIRONMENTAL CONDITIONS** Moist to dry well drained soils.  
**HEIGHT/SPREAD** 0.1-0.3m/0.2-0.4m  
**COMMENTS** Low bushy herb producing tiny pink flowers Dec-Feb.

**BOTANICAL NAME** Helichrysum scorpioides  
**COMMON NAME** Button Everlasting  
**ENVIRONMENTAL CONDITIONS** Well drained soils.  
**HEIGHT/SPREAD** 0.3m/0.2-0.3m  
**COMMENTS** Large yellow buttons spring-autumn. Attractive rockery plant which dies back after flowering.

# precinct 3

## lorne

38

**BOTANICAL NAME** Isopogon ceratophyllus  
**COMMON NAME** Horny Cone-bush  
**ENVIRONMENTAL CONDITIONS** Requires excellent drainage.  
**HEIGHT/SPREAD** 0.2-0.6m/0.5-1.2m  
**COMMENTS** Small shrub to 50cm tall with woody rootstock and a compact mound of stiff, rigid, prickly light green leaves. Small bright yellow flowers Sept-Nov.

**BOTANICAL NAME** Leucophyta brownii  
**COMMON NAME** Cushion Bush  
**ENVIRONMENTAL CONDITIONS** Well drained dry conditions. Full sun.  
**HEIGHT/SPREAD** 0.2-1m/0.5-2m  
**COMMENTS** Attractive grey low, rounded shrub which withstands coastal spray and salt. Foliage reflects available light at night time, making it an ideal plant for defining pathways.

**BOTANICAL NAME** Olearia ramulosa  
**COMMON NAME** Twiggly Daisy Bush  
**ENVIRONMENTAL CONDITIONS** Well drained soil.  
**HEIGHT/SPREAD** 0.5-1m/1m  
**COMMENTS** Attractive garden plant with white or mauve flower heads Sept-May. Fast growing.

**BOTANICAL NAME** Pelargonium australe  
**COMMON NAME** Austral Stork's-bill  
**ENVIRONMENTAL CONDITIONS** Well drained soils tolerating dryness once established.  
**HEIGHT/SPREAD** 0.3-0.6m/0.3-1m  
**COMMENTS** Good plant for rockeries which binds soil or sand. May dieback to rootstock during Summer.

**BOTANICAL NAME** Pimelea humilis  
**COMMON NAME** Common Rice-flower  
**ENVIRONMENTAL CONDITIONS** Moist well drained soil.  
**HEIGHT/SPREAD** 0.1-0.5m/0.3-1m  
**COMMENTS** Small perennial plant with a suckering habit. Heads of white flowers spring/summer.

**BOTANICAL NAME** Pimelea linifolia  
**COMMON NAME** Slender Rice-flower  
**ENVIRONMENTAL CONDITIONS** Well drained soil.  
**HEIGHT/SPREAD** 0.2-0.5m  
**COMMENTS** Erect or clump forming prostrate plant with terminal clusters of hairy white flowers in spring.

**BOTANICAL NAME** Rhagodia candolleana  
**COMMON NAME** Seaberry Saltbush  
**ENVIRONMENTAL CONDITIONS** Well drained soils.  
**HEIGHT/SPREAD** 1m/1m  
**COMMENTS** Semi-succulent scrambling shrub.

**BOTANICAL NAME** Stylidium graminifolium  
**COMMON NAME** Grass Trigger Plant  
**ENVIRONMENTAL CONDITIONS** Moist well drained soils, tolerating wet and dry periods once established.  
**HEIGHT/SPREAD** 0.2-0.6m/0.2-0.3m  
**COMMENTS** Perennial herb with long narrow grass like leaves and a slender stem bearing a narrow spike of pink flowers.

**BOTANICAL NAME** Tetratheca ciliata  
**COMMON NAME** Common Pink Bells  
**ENVIRONMENTAL CONDITIONS** Well drained soil, responding to extra moisture in summer.  
**HEIGHT/SPREAD** 0.3-0.5m/0.3-0.6m  
**COMMENTS** Profuse fragrant pink or mauve flowers July-Dec.



*Slender Rice Flower*

## Groundcovers

**BOTANICAL NAME** Acrotriche serrulata  
**COMMON NAME** Honey pots  
**ENVIRONMENTAL CONDITIONS** Moist well drained soils tolerating dry periods.  
**HEIGHT/SPREAD** 0.1-0.3m/0.5-1m  
**COMMENTS** Slow growing, dense ground covering plant. Translucent tubular flowers May-Oct with a honey fragrance.

**BOTANICAL NAME** Astroloma humifusum  
**COMMON NAME** Cranberry Heath  
**ENVIRONMENTAL CONDITIONS** Well drained soils tolerating dry periods once established.  
**HEIGHT/SPREAD** 0.1-0.5m/1-1.5m  
**COMMENTS** Dense spreading mat like plant with attractive small bright red tubular flowers most of the year. Excellent for rockeries, embankments, under shrubs or in hanging baskets.

**BOTANICAL NAME** Bossiaea prostrata  
**COMMON NAME** Creeping Bossiaea  
**ENVIRONMENTAL CONDITIONS** Well drained soil. Suitable in sun or shade.  
**HEIGHT/SPREAD** Prostrate/0.5-1.5m  
**COMMENTS** Prostrate, lightly spreading, showy yellow pea flowers in Spring.



**BOTANICAL NAME** *Brachyscome multifida*

**COMMON NAME** Cut-leaf Daisy  
**ENVIRONMENTAL CONDITIONS** Moist clay soils.

**HEIGHT/SPREAD** 0.1-0.4m/0.2-1m  
**COMMENTS** Fast growing low spreading perennial. Profuse lilac-blue or mauve flowers. Useful soil binder.

**BOTANICAL NAME** *Carpobrotus rossii*

**COMMON NAME** Karkalla  
**ENVIRONMENTAL CONDITIONS** Sandy soil. Full sun required for flowers.

**HEIGHT/SPREAD** Prostrate/2-3m  
**COMMENTS** Prostrate succulent perennial herb with thick fleshy leaves and pale purple to pink flowers on short stalks. Good soil binding plant.

**BOTANICAL NAME** *Dichondra repens*  
**COMMON NAME** Kidney Weed

**ENVIRONMENTAL CONDITIONS** Moist well drained soils. Shade.  
**HEIGHT/SPREAD** Prostrate, creeping.

**COMMENTS** Matting, prostrate herb. Lawn substitute. Kidney shaped leaves with tiny cream flowers.

**BOTANICAL NAME** *Geranium solanderi*

**COMMON NAME** Austral Crane's-bill  
**ENVIRONMENTAL CONDITIONS** Well drained soils, tolerating moisture.

**HEIGHT/SPREAD** Prostrate 0.5m/0.6-1.5m

**COMMENTS** Hairy creeping perennial herb.

**BOTANICAL NAME** *Goodenia geniculata*

**COMMON NAME** Bent Goodenia  
**ENVIRONMENTAL CONDITIONS** Moist soils.

**HEIGHT/SPREAD** 0.1-0.5m/0.1-0.5m  
**COMMENTS** Perennial suckering matting herb. Long flowering. Yellow flowers. Excellent rockery plant.

**BOTANICAL NAME** *Goodenia lanata*  
**COMMON NAME** Trailing Goodenia

**ENVIRONMENTAL CONDITIONS** Tolerates extended dry periods once established.

**HEIGHT/SPREAD** Prostrate/0.5-1.5m  
**COMMENTS** Attractive solitary flowers on long stalks Oct-Dec. Trailing stems.

**BOTANICAL NAME** *Kennedia prostrata*

**COMMON NAME** Running Postman  
**ENVIRONMENTAL CONDITIONS** Well drained soils.

**HEIGHT/SPREAD** Prostrate/1-2.5m  
**COMMENTS** Fast growing prostrate with very showy red pea flowers.

**BOTANICAL NAME** *Platylobium obtusangulum*

**COMMON NAME** Common Flat-pea  
**ENVIRONMENTAL CONDITIONS** Prefers well drained soil.

**HEIGHT/SPREAD** 0.3-0.5m/1m

**COMMENTS** Triangular leaves and small attractive yellow and red pea flowers in spring.

**BOTANICAL NAME** *Threlkeldia diffusa*

**COMMON NAME** Coast Bonefruit  
**ENVIRONMENTAL CONDITIONS** Moist saline soils.

**HEIGHT/SPREAD** Prostrate-0.3m/1m  
**COMMENTS** Spreading succulent perennial herb. Matting plant for coastal conditions.

**BOTANICAL NAME** *Viola hederacea*

**COMMON NAME** Ivy-leaf Violet  
**ENVIRONMENTAL CONDITIONS** Moist to wet soils.

**HEIGHT/SPREAD** Prostrate  
**COMMENTS** Fast growing herb which creates a dense mat with small white flowers most of the year.



*Cranberry Heath*

## Grasses, Sedges, Lilies, Irises & Grasstrees

**BOTANICAL NAME** *Arthropodium strictum*

**COMMON NAME** Chocolate Lily  
**ENVIRONMENTAL CONDITIONS** Well drained soils.

**HEIGHT/SPREAD** 0.2-1m/0.2-0.8m  
**COMMENTS** Attractive and adaptable perennial shrub. Chocolate scented violet coloured flowers.

**BOTANICAL NAME** *Carex appressa*  
**COMMON NAME** Tall sedge

**ENVIRONMENTAL CONDITIONS** Requires ample moisture, tolerating periods of inundation.  
**HEIGHT/SPREAD** 0.5-1.2m/0.5-1m  
**COMMENTS** Suitable for wet areas, stabilising soil, or as an aquatic or bog garden plant.

**BOTANICAL NAME** *Dianella revoluta*  
**COMMON NAME** Black Anther Flax-lily

**ENVIRONMENTAL CONDITIONS** Well drained soils. Tolerates dry soils in shade.

**HEIGHT/SPREAD** 0.3-1.0m/0.5-2.5m

**COMMENTS** Perennial plant with dark green linear leaves to 70cm and blue flowers on branched stems. Common in tea-tree heath.

# precinct 3 lorne

40

**BOTANICAL NAME** *Gahnia sieberiana*  
**COMMON NAME** Red-fruited Saw – sedge

**ENVIRONMENTAL CONDITIONS**

Tolerates moist soils for most of the year.

**HEIGHT/SPREAD** 1.5-3m/2-3m

**COMMENTS** Perennial sedge forming tussocks. Attractive strap like leaves and flower head. Important butterfly food source and habitat for small birds.

**BOTANICAL NAME** *Isolepis nodosa*  
**COMMON NAME** Knobby Club-rush

**ENVIRONMENTAL CONDITIONS** Moist soils, tolerates dry and wet conditions when established.

**HEIGHT/SPREAD** 0.5-1.5m/0.6-2m

**COMMENTS** Hardy plant providing interesting contrast in landscapes. Ideal for wet areas.

**BOTANICAL NAME** *Juncus kraussii*  
**COMMON NAME** Sea Rush

**ENVIRONMENTAL CONDITIONS**

Brackish to saline areas.

**HEIGHT/SPREAD** 0.6-2m/0.5-1.5m

**COMMENTS** Perennial rush with round stems.

**BOTANICAL NAME** *Juncus procerus*  
**COMMON NAME** Tall Rush

**ENVIRONMENTAL CONDITIONS** Damp well drained soils.

**HEIGHT/SPREAD** 1-2m/0.6-1.5m

**COMMENTS** Soft, thick rounded hollow like stems.

**BOTANICAL NAME** *Lepidosperma laterale*

**COMMON NAME** Variable Sword-sedge

**ENVIRONMENTAL CONDITIONS** Grows well in moist sites, heavy soil, in full or part sun.

**HEIGHT/SPREAD** 1-1.5m high

**COMMENTS** Attractive strappy plant ideal for accent planting.

**BOTANICAL NAME** *Lomandra filiformis*

**COMMON NAME** Wattle Mat-rush

**ENVIRONMENTAL CONDITIONS** Moist, well drained clays or sands tolerating dry shady conditions once established.

**HEIGHT/SPREAD** 0.15-0.3m/0.15-0.2m

**COMMENTS** Hardy perennial forming rush-like tufts.

**BOTANICAL NAME** *Lomandra longifolia*

**COMMON NAME** Spiny-headed Mat-rush

**ENVIRONMENTAL CONDITIONS** Well drained soil tolerating dry shade.

**HEIGHT/SPREAD** 0.5-1m/0.5-1m

**COMMENTS** Hardy perennial, smooth bright green strappy leaves, scented yellowish flowers Sept-Dec.



*Spiny-headed Mat-rush*

**BOTANICAL NAME** *Poa labillardierei*  
**COMMON NAME** Common Tussock Grass

**ENVIRONMENTAL CONDITIONS** Well drained soil.

**HEIGHT/SPREAD** 0.2-0.9m/0.7-1m

**COMMENTS** Densely forming perennial tussock grasses with soft graceful form suiting many landscape styles.

**BOTANICAL NAME** *Themeda triandra*  
**COMMON NAME** Kangaroo Grass

**ENVIRONMENTAL CONDITIONS**

Adaptable to most soils which do not remain wet.

**HEIGHT/SPREAD** 0.4-0.9m/0.7m

**COMMENTS** Perennial tussock with attractive green/purple foliage and drooping "paw" like flower heads.

**BOTANICAL NAME** *Xanthorrhoea australis*

**COMMON NAME** Austral Grass-tree

**ENVIRONMENTAL CONDITIONS** Well drained soils, tolerating dry conditions once established.

**HEIGHT/SPREAD** To 3m high

**COMMENTS** Attractive slow growing perennial plant with thick woody trunk surrounded by grassy tuft of leaves.

## Climbers & Scramblers

**BOTANICAL NAME** *Billardiera scandens*

**COMMON NAME** Climbing/Common Appleberry

**ENVIRONMENTAL CONDITIONS** Well drained dry to moist soils.

**HEIGHT/SPREAD** Climber

**COMMENTS** Soft climber with greenish-yellow tubular flowers throughout the year.

**BOTANICAL NAME** *Clematis aristata*

**COMMON NAME** Austral Clematis

**ENVIRONMENTAL CONDITIONS** Moist soils with shade.

**HEIGHT/SPREAD** Climber

**COMMENTS** Vigorous climber, masses of creamy white starry flowers Aug-March.

**BOTANICAL NAME** *Clematis microphylla*

**COMMON NAME** Small-leaved Clematis

**ENVIRONMENTAL CONDITIONS** Well drained soils.

**HEIGHT/SPREAD** Climber

**COMMENTS** Climber with dull green leaves and masses of creamy starry flowers July-Nov.

**BOTANICAL NAME** *Glycine clandestina*

**COMMON NAME** Twining Glycine

**ENVIRONMENTAL CONDITIONS** Moist well drained soils, tolerating dry conditions once established.

**HEIGHT/SPREAD** Twining 0.3-2m tall

**COMMENTS** Slender open twiner with bluish-mauve pea flowers Oct-Jan.



# precinct 3 lorne



4 1

**BOTANICAL NAME** Muehlenbeckia  
adpressa

**COMMON NAME** Climbing Lignum

**ENVIRONMENTAL CONDITIONS** Well  
drained sandy soils.

**HEIGHT/SPREAD** Climber

**COMMENTS** Perennial with small  
greenish-yellow flowers Sept-  
Dec. Good for fences and  
retaining walls, tolerates salt  
exposure and dryness.

**BOTANICAL NAME** Tetragonia  
implexica

**COMMON NAME** Bower Spinach

**ENVIRONMENTAL CONDITIONS** Well  
drained sandy soils. Tolerates  
dry soils with shade.

**HEIGHT/SPREAD** 0.3/2m

**COMMENTS** Succulent plant  
suitable for sandy soils/dunes.

**BOTANICAL NAME** Zygophyllum  
billardieri

**COMMON NAME** Coast Twin-leaf

**ENVIRONMENTAL CONDITIONS** Sandy  
well drained soil tolerating dry  
periods.

**HEIGHT/SPREAD** 0.3-0.6/1m

**COMMENTS** Fire retardant. Suitable  
for exposed coastal conditions.



# lorne summary

42

## Botanical Name

Acacia dealbata  
Acacia mearnsii  
Acacia melanoxylon  
Acacia mucronata  
Acacia myrtifolia  
Acacia pycnantha  
Acacia stricta  
Acacia verniciflua  
Acacia verticillata  
Acrotriche serrulata  
Allocasuarina verticillata  
Alyxia buxifolia  
Arthropodium strictum  
Astroloma humifusum  
Banksia marginata  
Bedfordia arborescens  
Billardiera scandens  
Bossiaea prostrata  
Brachyscome multifida  
Bursaria spinosa  
Carex appressa  
Carpobrotus rossii  
Cassinia aculeata  
Clematis aristata  
Clematis microphylla  
Coprosmia quadrifida  
Correa alba  
Correa reflexa  
Dianella revoluta  
Dichondra repens  
Epacris impressa  
Eucalyptus aromaphloia  
Eucalyptus baxteri  
Eucalyptus cytellocarpa  
Eucalyptus globulus ssp globulus  
Eucalyptus obliqua  
Eucalyptus ovata  
Eucalyptus radiata  
Eucalyptus viminalis  
Eucalyptus willisii  
Gahnia sieberiana  
Geranium solanderi  
Glycine clandestina  
Gonocarpus tetragynus

## Common Name

Silver Wattle  
Black Wattle  
Blackwood  
Narrow-leaf Wattle  
Myrtle Wattle  
Golden Wattle  
Hop Wattle  
Varnish Wattle  
Prickly Moses  
Honey pots  
Drooping Sheoak  
Sea Box  
Chocolate Lily  
Cranberry Heath  
Silver Banksia  
Blanket Leaf  
Climbing/Common Appleberry  
Creeping Bossiaea  
Cut-leaf Daisy  
Sweet Bursaria  
Tall sedge  
Karkalla  
Common Cassinia  
Austral Clematis  
Small-leaved Clematis  
Prickly Currant-bush  
White Correa  
Common Correa  
Black Anther Flax -lily  
Kidney Weed  
Common Heath  
Scentbark  
Brown Stringybark  
Mountain Grey Gum  
Southern Blue Gum  
Messmate Stringybark  
Swamp Gum  
Narrow-leaf Peppermint  
Manna Gum  
Shining Peppermint  
Red-fruited Saw –sedge  
Austral Crane's-bill  
Twining Glycine  
Common Raspwort

## Botanical Name

Goodenia geniculata  
Goodenia lanata  
Goodenia ovata  
Gynatrix pulchella  
Hedycarya augustifolia  
Helichrysum scorpioides  
Indigofera australis  
Isolepis nodosa  
Isopogon ceratophyllus  
Juncus kraussii  
Juncus procerus  
Kennedia prostrata  
Lepidosperma laterale  
Leptospermum continentale  
Leptospermum scoparium  
Leucophyta brownii  
Leucopogon parviflorus  
Lomandra filiformis  
Lomandra longifolia  
Muehlenbeckia adpressa  
Myoporum insulare  
Myoporum sp  
Olearia axillaris  
Olearia lirata  
Olearia phlogopappa  
Olearia ramulosa  
Ozothamnus ferrugineus  
Pelargonium australe  
Pimelea humilis  
Pimelea ligustrina  
Pimelea linifolia  
Platylobium obtusangulum  
Poa labillardierei  
Poa poiformis  
Pomaderris aspera  
Prosanthera lasianthos  
Prosanthera melissifolia  
Pultenaea daphnoides  
Rhagodia candolleana  
Solanum laciniatum  
Spyridium parvifolium  
Stylidium graminifolium  
Tetragonia implexicoma  
Tetrateca ciliata

## Common Name

Bent Goodenia  
Trailing Goodenia  
Hop Goodenia  
Hemp Bush  
Austral Mulberry  
Button Everlasting  
Austral Indigo  
Knobby Club-rush  
Horny Cone-bush  
Sea Rush  
Tall Rush  
Running Postman  
Variable Sword-sedge  
Prickly Tea-tree  
Manuka  
Cushion Bush  
Coast Beard Heath  
Wattle Mat-rush  
Spiny-headed Mat-rush  
Climbing Lignum  
Common Boobialla  
Sticky Boobialla  
Coast Daisy Bush  
Snow Daisy-bush  
Dusty Daisy-bush  
Twiggy Daisy Bush  
Tree Everlasting  
Austral Stork's-bill  
Common Rice-flower  
Tall Rice-flower  
Slender Rice-flower  
Common Flat- pea  
Common Tussock Grass  
Blue Tussock Grass  
Hazel Pomaderris  
Christmas Bush  
Balm Mint-bush  
Large leaf Bush pea  
Seaberry Saltbush  
Kangaroo Apple  
Dusty Miller  
Grass Trigger Plant  
Bower Spinach  
Common Pink Bells

# lorne summary



## Botanical Name

Themeda triandra  
Threlkeldia diffusa  
Viola hederacea  
Xanthorrhoea australis  
Zygophyllum billardieri

## Common Name

Kangaroo Grass  
Coast Bonefruit  
Ivy-leaf Violet  
Austral Grass-tree  
Coast Twin-leaf





# appendices, references & acknowledgements

## ACKNOWLEDGMENTS

The Surf Coast Shire would like to thank the following people and organisations who have assisted with the preparation of this Guide:

- ANGAIR Inc
- Surf Coast Shire Planning Department
- Diane Clark
- Glenda Shomaly
- Geoff Clark
- Graeme Stockton
- Mark Trengove
- Mike Robinson-Koss
- Nick Romanowski

## APPENDICES

### APPENDIX A

#### Great Ocean Views Estate List

BOTANICAL NAME	COMMON NAME
<b>Trees</b>	
<i>Eucalyptus leucoxylon</i> ssp. <i>bellarinensis</i>	Bellarine Yellow Gum
<i>Eucalyptus viminalis</i> ssp. <i>Pryoriana</i>	Coast Manna Gum
<i>Allocasuarina verticillata</i>	Drooping Sheoke
<b>Tall Shrubs</b>	
<i>Acacia paradoxa</i>	Hedge Wattle
<i>Acacia pycnantha</i>	Golden Wattle
<i>Acacia verniciflua</i>	Varnish Wattle
<i>Bursaria spinosa</i>	Sweet Bursaria
<b>Low Shrubs</b>	
<i>Acrotriche serrulata</i>	Honeypots
<i>Coprosma quadrifida</i>	Prickly Currant-bush
<i>Lissanthe strigosa</i> ssp. <i>Subulata</i>	Peach Heath
<i>Pimelea humilis</i>	Common Rice-flower
<i>Rhagodia candolleana</i> ssp. <i>candolleana</i>	Seaberry Saltbush
<b>Grasses</b>	
<i>Austrodanthonia geniculata</i>	Kneed Wallaby-grass
<i>Austrodanthonia racemosa</i> var. <i>racemosa</i>	Stiped Wallaby-grass
<i>Austrostipa mollis</i>	Supple Spear-grass
<i>Themeda triandra</i>	Kangaroo Grass
<b>Lilies</b>	
<i>Arthropodium strictum</i>	Chocolate Lily
<i>Burchardia umbellata</i>	Milkmaids

- Dianella brevicaulis* Short-stalk Flax-lily
- Dianella revoluta* s.l. Black-anther Flax-lily
- Poa labillardierei* Common Tussock-grass
- Poa morrisii* Soft Tussock-grass

#### Ground cover

- Astroloma humifusum* Cranberry Heath
- Bossiaea prostrata* Creeping Bossiaea
- Convolvulus erubescens* Pink Bindweed
- Tetragonia implexicoma* Bower Spinach Twiner
- Clematis microphylla* Small-leaf Clematis

## APPENDIX B

### Torquay Sands List

#### Trees

- Acacia implexa* Lightwood
- Acacia melanoxylon* Blackwood
- Acacia pycnantha* Golden Wattle
- Allocasuarina littoralis* Black She-oak
- Acacia verticillata* var. *Verticillata* Prickly Moses
- Banksia marginata* (tree form) Silver Banksia
- Bursaria spinosa* var. *macrophylla* Large-leaf Sweet Bursaria
- Bursaria spinosa* var. *spinosa* Sweet Bursaria
- Eucalyptus camaldulensis* River Red Gum
- Eucalyptus leucoxylon* ssp. *bellarinensis* Bellarine Yellow Gum
- Eucalyptus ovata* var. *ovata* Swamp Gum
- Eucalyptus pauciflora* ssp. *pauciflora* White Sallee
- Eucalyptus tricarpa* Red Ironbark
- Eucalyptus viminalis* ssp. *Pryoriana* Coast Manna Gum
- Melaleuca lanceolata* Moonah

#### Large Shrubs

- Acacia paradoxa* Hedge Wattle
- Allocasuarina paludosa* Swamp She-oak
- Daviesia latifolia* Hop Bitter-Pea
- Kunzea ericoides* Burgan
- Leptospermum continentale* Prickly Tea-tree
- Leptospermum lanigerum* Woolly Tea-tree
- Leucopogon parviflorus* Coast Beard-heath
- Muehlenbeckia florulenta* Climbing Lignum
- Myoporum insulare* Boobialla
- Ozothamnus turbinatus* Pomaderris
- paniculosa* ssp. *Paniculosa* Coast Pomaderris
- Solanum aviculare* Kangaroo Apple
- Viminaria juncea* Golden Spray

#### Medium Shrubs

- Alyxia buxifolia* Sea Box
- Atriplex paludosa* ssp. *paludosa* Marsh Saltbush
- Indigofera australis* Austral Indigo
- Leptospermum myrsinoides* Silky Tea-tree





<i>Olearia axillaris</i>	Coast Daisy-bush
<i>Olearia glutinosa</i>	Sticky Daisy-bush
<i>Rhagodia candolleana</i> ssp. <i>Candolleana</i>	Seaberry Saltbush
<i>Spyridium parvifolium</i>	Dusty Miller

## Small Shrubs

<i>Correa alba</i> var. <i>alba</i>	White Correa
<i>Correa reflexa</i> var. <i>reflexa</i>	Common Correa
<i>Dillwynia cinerascens</i>	Grey Parrot-pea
<i>Einadia nutans</i> ssp. <i>Nutans</i>	Nodding Salt-bush
<i>Epacris impressa</i>	Common Heath
<i>Halosarcia pergranulata</i> ssp. <i>Pergranulata</i>	Blackseeded Glasswort
<i>Hibbertia riparia</i>	Erect Guinea-flower
<i>Hibbertia sericea</i> var. <i>sericea</i>	Silky Guinea-flower
<i>Lasiopetalum baueri</i>	Velvet Bush
<i>Lavatera plebeia</i> var. <i>plebeia</i>	Australian Hollyhock
<i>Leucophyta brownii</i>	Cushion Bush
<i>Olearia ramulosa</i> var. <i>ramulosa</i>	Twiggy Daisy Bush
<i>Pimelea serpyllifolia</i>	Thyme Rice-flower
<i>Platylobium obtusangulum</i>	Common Flat-pea
<i>Senecio odoratus</i>	Scented Groundsel
<i>Xanthorrhoea australis</i>	Austral Grass-tree

## Woody Vines

<i>Billardiera scandens</i> var. <i>scandens</i>	Climbing/Common Appleberry
<i>Clematis microphylla</i> var. <i>microphylla</i>	Small-leaved Clematis
<i>Muehlenbeckia adpressa</i>	Climbing Lignum

## Prostrate or Low Ground Covers: Herbaceous

<i>Disphyma crassifolium</i> ssp. <i>Clavellatum</i>	Rounded Noon-flower
<i>Einadia nutans</i> ssp. <i>nutans</i>	Nodding Saltbush
<i>Enchylaena tomentosa</i>	Ruby Saltbush
<i>Kennedia prostrata</i>	Running Postman
<i>Swainsona lessertiifolia</i>	Coast Swainson-pea
<i>Tetragonia implexicoma</i>	Bower Spinach
<i>Zygophyllum billardieri</i>	Coast Twin-leaf
<i>Chrysocephalum apiculatum</i>	Common Everlasting
<i>Chrysocephalum semipapposum</i>	Clustered Everlasting

## Prostrate or Low Ground Covers: Woody

<i>Carpobrotus rossii</i>	Karkalla
<i>Goodenia ovata</i> (prostrate coastal form from Jan Juc)	Hop Goodenia
<i>Pultenaea tenuifolia</i>	Slender Bush-pea
<i>Threlkeldia diffusa</i>	Coast Bonefruit

## Tussock Forming Grasses or Graminoids

<i>Austrodanthonia</i> sp	Wallaby Grass
<i>Gahnia filum</i>	Chaffy Saw-sedge
<i>Lomandra longifolia</i> ssp. <i>longifolia</i>	Spiny-headed Mat-rush
<i>Poa poiformis</i> var. <i>poa formis</i>	Tussock Grass
<i>Stipa flavescens</i>	Coast Spear-grass
<i>Austrostipa stipoides</i>	Spear Grass
<i>Themeda triandra</i>	Kangaroo Grass
<i>Xanthorrhoea minor</i> ssp. <i>lutea</i>	Small Grass-tree

## Rhizomatous Perennial Herbs

<i>Dianella brevicaulis</i>	Coast Flax-lily
<i>Distichlis distichophylla</i>	Australian Salt Grass
<i>Lepidosperma gladiatum</i>	Sword/Rapier-sedge
<i>Spinifex sericeus</i>	Hairy Spinifex

## APPENDIX C

### Council Reserve Lists

#### Dans Nature Reserve

##### Grasses

<i>Danthonia caespitosa</i>	Common Wallaby-grass
<i>Danthonia eriantha</i>	Wallaby-grass
<i>Danthonia geniculata</i>	Kneed Wallaby-grass
<i>Danthonia setacea</i>	Bristly Wallby-grass
<i>Deyeuxia quadriseta</i>	Reed Bent-grass
<i>Distichlis distichophylla</i>	Australian Salt Grass
<i>Microlaena stipoides</i>	Weeping Grass
<i>Phragmites australis</i>	Common Reed
<i>Poa labillardieri</i>	Common Tussock-grass
<i>Poa poiformis</i>	Blue Tussock-grass
<i>Poa tenera</i>	Slender Tussock-grass
<i>Stipa elegantissima</i>	Feather Spear-grass
<i>Stipa rudis</i>	Spear-grass
<i>Stipa scabra</i>	Rough Spear-grass
<i>Themeda triandra</i>	Kangaroo Grass

##### Lilies & Allied Plants

<i>Arthropodium milleflorum</i>	Pale Vanilla Lily
<i>Arthropodium strictum</i>	Chocolate Lily
<i>Dianella revoluta</i>	Black-anther Flax-lily
<i>Lomandra filiformis</i>	Wattle Mat-rush
<i>Lomandra longifolia</i>	Spiny-headed Mat-rush
<i>Triglochin procera</i>	Water ribbons

##### Dicotyledons

<i>Acacia mearnsii</i>	Black Wattle
<i>Acacia paradoxa</i>	Hedge Wattle
<i>Acacia pycnantha</i>	Golden Wattle
<i>Anagallis arvensis</i>	Scarlet Pimpernel
<i>Allocasuarina verticillata</i>	Drooping Sheoke
<i>Bursaria spinosa</i>	Sweet Bursaria
<i>Clematis microphylla</i>	Small-leaved Clematis
<i>Cotula coronopifolia</i>	Water buttons
<i>Dodonaea viscosa</i> ssp. <i>spatulata</i>	Wedge-leaf Hop-bush
<i>Einadia hastata</i>	Saloop Saltbush
<i>Exocarpus cupressiformis</i>	Cherry Ballart
<i>Goodenia ovata</i>	Hop Goodenia
<i>Melaleuca lanceolata</i>	Moonah
<i>Pomaderris racemosa</i>	Cluster Pomaderris
<i>Rumex acetosella</i>	Sorrel

# appendices, references & acknowledgements

46

## Giddings Nature Reserve

### Grasses

*Poa labillardieri*

*Poa morrisii*

*Themeda triandra*

### Lilies & Allied Plants

*Bulbine bulbosa*

*Burchardia umbellata*

*Chamaescilla corymbosa*

*Dianella revoluta* var. *revoluta*

*Dianella tasmanica*

*Dichopogon strictus*

*Gahnia radula*

*Hypoxis glabella* var. *glabella*

*Lepidosperma filiforme*

*Lepidosperma* sp.

*Xanthorrhoea minor* ssp. *Lutea*

### Orchids & Ferns

*Microtis* sp.

*Pteridium esculentum*

*Thelymitra ixioides*

*Thelymitra* sp.

### Dicotyledons

*Acacia mearnsii*

*Acacia melanoxydon*

*Acacia verticillata*

*Acaena echinata*

*Acaena novaezelandiae*

*Acrotriche prostrata*

*Acrotriche serrulata*

*Baumea rubiginosa*

*Bossiaea prostrata*

*Centella cordifolia*

*Chrysocephalum apiculatum*

*Cynoglossum suaveolens*

*Dichondra repens*

*Dillwynia juniperina*

*Dillwynia phyllicoides*

*Drosera peltata* ssp. *auriculata*

*Drosera whittakeri*

*Epilobium billardierianum*

*Eucalyptus viminalis*

*Exocarpos cupressiformis*

*Geranium potentilloides*

*Geranium retrorsum*

*Gonocarpus tetragynus*

*Hibbertia riparia*

*Kennedia prostrata*

Common Tussock Grass

Velvet Tussock Grass

Kangaroo Grass

Bulbine Lily

Milkmaid

Blue Stars

Blank Anther/ Spreading

Flax Lily

Tasman Flax Lily

Chocolate Lily

Thatch Saw Sedge

Tiny Star

Common Rapier Sedge

Sedge

Small Grass Tree

Onion Orchid

Austral BraCken Fern

Dotted Sun Orchid

Sun-orchids

Black Wattle

Blackwood

Prickly Moses

Sheep's Burr

Bidgee Widgee

Trailing Ground-berry

Honey pots

Soft twig-rush

Creeping Bossiaea

Swamp pennywort

Common Everlasting

Sweet Hounds-tongue

Kidney-weed

Prickly Parrot pea/ Juniper

Pea Bush

Small Leaf Parrot Pea

Tall Sundew

Scented Sundew

Smooth Willow Herb

Manna Gum

Cherry Ballart

Crane's Bill

Grassland Crane's-bill

Raspwort

Erect Guinea-flower

Running Postman

*Leptorhynchos squamatus*

*Leptospermum continentale*

*Leucopogon virgatus*

*Lobelia alata*

*Opercularia ovata*

*Oxalis perennans*

*Ozothamnus ferruginew*

*Pimelea glauca*

*Pimelea humilis*

*Platylobium obtusangulum*

*Pultenaea humilis*

*Senecio bisserratus*

*Senecio glomeratus*

*Senecio hispidulus*

*Senecio quadridentatus*

*Stylidium graminifolium*

*Tetralthea ciliata*

*Veronica gracilis*

*Viola hederacea*

*Wahlenbergia stricta*

Scaly Buttons

Prickly Tea-tree

Common Beard Heath

Angled Lobelia

Broad Leaf Stinkweed

Native oxalis

Tree Everlasting

Smooth Rice-flower

Common Rice-flower

Common Flat Pea

Dwarf Bush-pea

Jagged Fireweed

Annual Fireweed

Rough Fireweed

Cotton Firewood

Grass Trigger Plant

Pink Bells/ Black-eyed

Susan

Slender Speedwell

Native or Ivy-leaf Violet

Tall Bluebell

Plant list compiled by Geoff Beilby (DNRE) August and November 1996

## Grass Tree Park

### Grasses

*Danthonia geniculata*

*Danthonia setacea*

*Danthonia* sp.

*Dichelachne crinita*

*Microlaena stipoides*

*Poa species*

*Stipa species*

*Themeda triandra*

### Ferns & Mosses

*Lindsaea linearis*

*Pteridium esculentum*

*Selaginella uliginosa*

### Lilies & Allied Plants

*Burchardia umbellata*

*Dianella revoluta*

*Dichopogon strictus*

*Gahnia radula*

*Hypolaena fastigiata*

*Hypoxis glabella*

*Juncus pallidus*

*Juncus polyanthemos*

*Laxmannia orientalis*

*Lepidosperma laterale*

*Lepidosperma semiteres*

Knead Wallaby-grass

Bristly Wallaby-grass

Wallaby Grass

Long-hair Plume-grass

Fibrous Spear-grass

Tussock Grass

Spear Grass

Kangaroo Grass

Screw Fern

Austral Bracken

Swamp Selaginella

Milkmaids

Black-anther Flax-lily

Chocolate Lily

Thatch Saw-sedge

Tassel Rope-rush

Tiny Star

Pale Rush

Tussock Rush

Dwarf Wire-lily

Variable Sword-sedge

Wire Raper-sedge



*Lomandra filiformis*  
*Lomandra longifolia*  
*Patersonia fragilis*  
*Schoenus apogon*  
*Tricoryne elatior*  
*Thysanotus patersonii*  
*Thysanotus tuberosus*  
*Wurmbea dioica*  
*Xanthorrhoea australis*

## Orchids

*Caladenia menziesii*  
*Corybas diemenicus*  
*Corybas dilatatus*  
*Glossodia major*  
*Lyperanthus nigricans*  
*Pterostylis nutans*  
*Pterostylis parviflora*  
*Thelymitra antennifera*  
*Thelymitra ixioides*

## Dicotyledons

*Acacia longifolia*  
*Acacia mearnsii*  
*Acacia paradoxa*  
*Acacia pycnantha*  
*Acacia suaveolens*  
*Acacia verticillata*  
*Acaena novae-zelandiae*  
*Acrotriche serrulata*  
*Allocasuarina pusilla*  
*Astroloma humifusum*  
*Banksia marginata*  
*Brachyscome uliginosa*  
*Brachyloma ciliatum*  
*Calytrix tetragona*  
*Cassinia aculeata*  
*Cassutha glabella*  
*Cassutha melantha*  
*Cassutha pubescens*  
*Centrolepis strigosa*  
*Chamaescilla corymbosa*  
*Chrysocephalum apiculatum*  
*Comesperma calymega*  
*Comesperma volubile*  
*Crassula decumbens*  
*Cryptandra tomentosa*  
*Daviesia brevifolia*  
*Dichondra repens*  
*Dillwynia cinerascens*  
*Dillwynia glaberrima*  
*Dillwynia sericea*  
*Drosera auriculata*

Wattle Matrush  
 Spiny-headed Matrush  
 Short Purple Flag  
 Common Bog-rush  
 Yellow Rush-lily  
 Twining Fringe-lily  
 Common Fringe-lily  
 Early Nancy  
 Austral Grass-tree

Hare Orchid  
 Slaty Helmet-orchid  
 Veined Helmet-orchid  
 Waxlip Orchid  
 Red-beak Orchid  
 Nodding Greenhood  
 Tiny Greenhood  
 Rabbit-ears  
 Dotted Sun-orchid

Sallow Wattle  
 Black Wattle  
 Hedge wattle  
 Golden Wattle  
 Sweet Wattle  
 Prickly Moses  
 Bidgee-Widgee  
 Honey-pot Heath  
 Dwarf She-oak  
 Cranberry Heath  
 Silver banksia  
 Small Swamp-daisy  
 Fringed Daphne-heath  
 Fringe Myrtle  
 Dogwood  
 Tangled Dodder-laurel  
 Coarse Dodder-laurel  
 Downy Dodder-laurel  
 Hairy Centrolepis  
 Blue Squill  
 Common Everlasting  
 Blue-spike Milkwort  
 Love Creeper  
 Spreading Crassula  
 Prickly Cryptandra  
 Leafless Bitter-pea  
 Kidney-weed  
 Grey Parrot-pea  
 Smooth Parrot-pea  
 Showy Parrot-pea  
 Tall Sundew

*Drosera glanduligera*  
*Drosera planchonii*  
*Drosera pygmaea*  
*Drosera whittakeri*  
*Epacris impressa*  
*Eucalyptus aromaphloia*  
*Eucalyptus leucoxydon*  
*Eucalyptus obliqua*  
*Eucalyptus ovata*  
*Eucalyptus viminalis*  
*Exocarpos cupressiformis*  
*Gompholobium ecostatum*  
*Gonocarpus tetragynus*  
*Gnaphalium sphaericum*  
*Goodenia geniculata*  
*Goodenia lanata*  
*Gratiola latifolia*  
*Helichrysum apiculatum*  
*Helichrysum obtusifolium*  
*Helichrysum scorpioides*  
*Hibbertia fasciculata*  
*Hibbertia sericea*  
*Hibbertia stricta*  
*Hydrocotyle laxiflora*  
*Hydrocotyle sibthorpiodes*  
*Hypericum gramineum*  
*Isopogon ceratophyllum*  
*Kennedia prostrata*  
*Leptospermum continentale*  
*Leptospermum laevigatum*  
*Leptospermum myrsinoides*  
*Leptospermum species*  
*Leucopogon parviflorus*  
*Leucopogon virgatus*  
*Lobelia pratioides*  
*Melaleuca lanceolata*  
*Muehlenbeckia adpressa*  
*Myoporum insulare*  
*Oxalis corniculata*  
*Patersonia fragilis*  
*Persoonia juniperina*  
*Pimelea glauca*  
*Pimelea humilis*  
*Pimelea phylloides*  
*Platylobium obtusangulum*  
*Polypompholyx tenella*  
*Pomaderris oraria*  
*Pultenaea dentata*  
*Pultenaea humilis*  
*Rhagodia baccata*  
*Senecio glomeratus*  
*Senecio quadridentatus*

Scarlet Sundew  
 Climbing Sundew  
 Tiny Sundew  
 Scented Sundew  
 Common Heath  
 Scent-bark  
 Yellow Gum  
 Messmate Stringybark  
 Swamp Gum  
 Manna Gum  
 Cherry Ballart  
 Dwarf Wedge-pea  
 Common Raspwort  
 Common Cudweed  
 Bent Goodenia  
 Trailing Goodenia  
 Austral Brooklime  
 Common Everlasting  
 Blunt Everlasting  
 Button Everlasting  
 Bundled Guinea-flower  
 Silky Guinea-flower  
 Erect Guinea-flower  
 Stinking Pennywort  
 Shining Pennywort  
 Small St John's Wort  
 Horny Cone-Bush  
 Running Postman  
 Prickly Tea-tree  
 Coast Tea-tree  
 Silky Tea-tree  
 Hybrid Tea-tree  
 Coast Beard-heath  
 Common Beard-heath  
 Poison Lobelia  
 Moonah  
 Climbing Lignum  
 Common Boobialla  
 Creeping Weed-sorrel  
 Short Purple-flag  
 Prickly Geebung  
 Smooth Rice-flower  
 Common Rice-flower  
 Heath Rice-flower  
 Common Flat-pea  
 Pink Bladderwort  
 Coast Pomaderris  
 Clustered Bush-pea  
 Dwarf Bush-pea  
 Seaberry Saltbush  
 Annual Fireweed  
 Cotton Firewood

# appendices, references & acknowledgements

48

*Solanum laciniatum*  
*Stackhousia monogyna*  
*Stylidium graminifolium*  
*Stylidium inundatum*  
*Tetragonia implexicoma*  
*Tetratheca ciliata*  
*Utricularia dichotoma*  
*Viola hederacea*  
*Wahlenbergia gracilis*  
*Wahlengbergia stricta*  
*Xanthosia pusilla*

## Larcombes Nature Reserve

### Grasses

*Agrostis* sp.  
*Distichlis distichophylla*  
*Hemarthria uncinata* var. *uncinata*

### Lilies & Allied Plants

*Baumea rubiginosa*  
*Baumea* sp.  
*Eleocharis acuta*  
# *Gahnia radudla*  
*Isolepis cernua*  
*Juncus amabilis*  
*Juncus flavidus*  
*Juncus gregiflorus*  
*Juncus holoschoenus*  
*Juncus homalocaulis*  
*Juncus kraussii* sp. *Australiensis*  
# *Lomandra longifolia*  
*Ruppia polycarpa*  
*Tricoryne elatior*  
*Triglochin procerum* sp.

### Orchids & Ferns

# *Pteridium esculentum*

### Dicotyledons

# *Acacia mearnsii*  
# *Acacia verticillata*  
*Asperula conferata*  
# *Bossiaea prostrata*  
*Calocephalus lacteus*  
# *Eucalyptus viminalis*  
*Geranium* sp.  
*Haloragis heterophylla*  
*Hibbertia* sp.  
# *Kennedia prostrata*  
# *Leptospermum continentale*  
*Liaepsis polyantha*  
*Lythrum hyssopifolia*  
*Limulus repens*

Large Kangaroo Apple  
Creamy Stackhousia  
Grass Trigger-plant  
Hundreds and Thousands  
Bower spinach  
Pink Bells  
Fairies Aprons  
Ivy-leaf Violet  
Annual Bluebell  
Tall Bluebell  
Heath Xanthosia

Bent Grass  
Austral Salt Grass  
Mat Grass  
Soft Twig Rush  
Twig Rush  
Common Spike-sedge  
Thatch Saw-sedge  
Nodding Club-sedge  
Hollow Rush  
Yellow Rush  
Green Rush  
Joint Leaf Rush  
Wiry Rush  
Sea Rush  
Spiny-headed Mat-rush  
Many-fruit Tassle  
Yellow Rush Lily  
Water Ribbons

Austral Bracken  
Black Wattle  
Prickly Moses  
Common Woodruff  
Creeping Bossiaea  
Milky Beauty-heads  
Manna Gum  
Crane's Bill  
Varied Raspwort  
Guinea Flower  
Running Postman  
Prickly Tea-tree  
Australian Lilaepsis  
Small Loosestrife  
Creeping Monkey-flower

*Myriophyllum muelleri*  
*Myriophyllum salsugineum*  
*Pratia irrigua*  
*Ranunculus amphitrichus*  
*Samolus repens*  
*Selliera radicans*

Hooded Water-milfoil  
Lake Water-milfoil  
Salt Pratia  
Small River Buttercup  
Creeping Brookweed  
Shiny Swamp-mat

# Remnant Roadside Vegetation of the Surf Coast Shire, 1997  
Source: Department of Natural Resource and Environment Flora Information System

## Menzels Nature Reserve

### Grasses

*Danthonia geniculata*  
# *Danthonia racemosa*  
*Danthonia setacea*  
*Danthonia* sp.  
*Dichelachne longisia*  
*Microlaena stipoides*  
*Themeda triandra*  
Knead Wallaby-grass  
Wallaby Grass  
Bristly Wallaby-grass  
Wallaby Grass  
Long-hair Plume-grass  
Weeping Grass  
Kangaroo Grass

### Lilies & Allied Plants

*Dianella revoluta*  
*Dichopogon strictus*  
*Lomandra filiformis*  
*Lomandra longifolia*  
# *Triglochin striata*  
*Trycorine eliator*  
*Thysanotus patersonii*  
*Wurmbea dioica*  
Black-anther Flax-lily  
Chocolate Lily  
Wattle Matrush  
Spiny-headed Matrush  
Striated Arrow-grass  
Yellow Rush-lily  
Twining Fringe-lily  
Early Nancy

### Orchids & Ferns

*Pteridium esculentum*  
*Thelymitra* sp. (probably *T. rubra* and *T. pauciflora*)  
Austral Bracken  
Sun-orchids

### Dicotyledons

*Acacia mearnsii*  
*Acacia melanoxydon*  
*Acacia paradoxa*  
*Acacia pycnantha*  
*Acacia verniciflua*  
*Acaena novae-zelandiae*  
*Actrotriche serrulata*  
*Allocasuarina verticillata*  
*Bossiaea prostrata*  
*Bursaria spinosa*  
*Calocephalus lacteus*  
*Chrysocephalum apiculatum*  
*Convolvulus remotus*  
*Cynoglossum suaveolens*  
*Daviesia latifolia*  
*Dichondra repens*  
*Dillwynia cinerascens*  
Black Wattle  
Blackwood  
Hedge wattle  
Golden Wattle  
Varnish Wattle  
Bidgee Widgee  
Honey-pot Heath  
Drooping She-oak  
Creeping Bossiaea  
Sweet Bursaria  
Milky Beauty-heads  
Common Everlasting  
Pink Convolvulus  
Sweet Hounds-tongue  
Hop Bitter-pea  
Kidney-weed  
Grey Parrot-pea





*Dillwynia glaberrima*  
*Einadia nutans*  
*Eucalyptus ovata*  
*Eucalyptus viminalis*  
*Exocarpos cupressiformis*  
 #*Fumaria* sp.  
*Geranium retrorsum*  
*Geranium solanderi*  
*Gonocarpus tetragynus*  
*Kennedia prostrata*  
 #*Leptinella reptans*  
*Linum marginale*  
*Lissanthe strigosa*  
 #*Lobelia alata*  
 #*Mimulus repens*  
*Oxalis exilis*  
*Pelargonium rodneyanum*  
*Platylobium obtusangulum*  
 #*Pimelea humilis*  
 #*Samolus repens*  
*Senecio quadridentatus*  
*Solenogyne quadriseta*  
*Tetragonia implexicoma*  
*Veronica gracilis*  
*Wahlenbergia communis*  
*Wahlenbergia luteola*  
*Wahlenbergia stricta*

## At Creek on Roadside

*Apium annum*  
*Cotula repens*  
*Lobelia alata*  
*Mimulus repens*  
*Samolus repens*  
*Triglochin striata*

# Additions from W Huggins – Geelong Field Nats (TP)

## Rice Nature Reserve

### Grasses

+*Danthonia caespitosa* Common Wallaby Grass  
 +*Danthonia eriantha* Hill Wallaby grass  
 +*Danthonia racemosa* Slender Wallaby Grass  
 +*Dichelachne crinita* Long Hair Plume Grass  
 +*Distichlis distichophylla* Austral Salt Grass  
 +*Microleana stipoides* Weeping Grass  
 +*Poa labillardieri* Common Tussock Grass  
 +*Poa sieberiana* Slender Tussock Grass  
*Stipa* sp. Spear Grass  
 +*Themeda triandra* Kangaroo Grass

Smooth Parrot-pea  
 Nodding Saltbush  
 Swamp Gum  
 Manna Gum  
 Cherry Ballart  
 Fumitory  
 Crane's-bill  
 Grassland Crane's-bill  
 Raspwort  
 Running Postman  
 Creeping Cotula  
 Native Flax  
 Peach Heath  
 Angled Lobelia  
 Creeping Monkey-flower  
 Yellow Wood Sorrel  
 Magenta Stork's Bill  
 Common flat-pea  
 Common Rice-flower  
 Brookweed  
 Common Firewood  
 Solenogyne  
 Bower spinach  
 Slender Speedwell  
 Tufted Bluebell  
 Bluebell  
 Tall Bluebell

Annual Celery  
 Creeping Cotula  
 Angled Lobelia  
 Creeping Monkey-flower  
 Brookweed  
 Striated Arrow-grass

### Lilies & Allied Plants

*Arthropodium milleflorum*  
*Arthropodium strictum*  
*Burchardia umbellata*  
 +*Carex inversa*  
 +*Carex teretifolius*  
 #*Corizandra enodis*  
*Dianella revoluta*  
 #*Eleocharis acuta*  
 +*Juncus bufonius*  
 +*Juncus* sp.  
 +*Lepidosperma curtisiae*  
*Lepidosperma* sp.  
*Lomandra longifolia*  
 +*Lomandra nana*  
*Luzula* sp.  
*Schoenus apogon*  
*Tricoryne elatior*  
*Triglochin procera*

### Orchids & Ferns

#*Adiantum aethiopicum*  
*Azolla filiculoides*  
*Microtis unifolia*  
*Pteridium esculentum*

### Dicotyledons

*Acacia mearnsii*  
*Acacia paradoxa*  
 +*Acacia pycnantha*  
*Acacia verticillata*  
 +*Acaena echinata*  
*Anagallis arvensis*  
*Allocasuarina verticillata*  
 +*Asperula conferata*  
*Astroloma humifusum*  
*Bossiaea prostrata*  
*Bursaria spinosa* var. *macrophylla*  
 #*Carpobrotus modestus*  
*Carpobrotus* sp.  
*Chrysocephalum apiculatum*  
*Convolvulus erubescens*  
 +*Convolvulus remotus*  
*Cynoglossum suaveolens*  
*Dichondra repens*  
*Dillwynia glaberrima*  
 #*Dillwynia* sp.  
*Drosera* sp.  
 #*Drosera peltata* ssp. *auriculata*  
*Einadia nutans*  
 #*Einadia nutans* ssp. *nutans*  
*Eryngium ovinum*  
 +*Eucalyptus camaldulensis*

Pale Vanilla Lily  
 Chocolate Lily  
 Milkmaid  
 Sedge  
 Basket Sedge  
 Black Bristle-rush  
 Black Anther Flax Lily  
 Common Spike-rush  
 Toad Rush  
 Rush  
 Little Sword-sedge  
 Sword-sedge  
 Spiney-headed Mat-rush  
 Mat Rush  
 Wood rush  
 Common Bog Rush  
 Yellow Rush Lily  
 Water Ribbons

Maiden Hair Fern  
 Red/ Pacific Azolla  
 Common Onion Orchid  
 Austral Bracken

Black Wattle  
 Hedge Wattle  
 Golden Wattle  
 Prickly Moses  
 Sheeps Burr  
 Scarlet Pimpernel  
 Drooping She-oak  
 Common Woodruff  
 Cranberry Heath  
 Creeping Bossiaea  
 Sweet Bursaria  
 Inland Pigface  
 Karkalla  
 Common Everlasting  
 Pink/Blushing Bindweed  
 Blushing Bind -weed  
 Sweet Hounds-tongue  
 Kidney-weed  
 Smooth- Heath Parrot Pea  
 Parrot Pea  
 Sundew  
 Tall Sundew  
 Nodding Saltbush  
 Climbing Saltbush  
 Blue Devil  
 River Red-gum

# appendices, references & acknowledgements

50

+ *Eucalyptus ovata*  
*Eucalyptus viminalis*  
*Gonocarpus tetragynus*  
*Haloragis heterophylla*  
*Hibbertia sericea*  
*Kennedia prostrata*  
 #*Leptorhynchus tenuifolius*  
*Leptorhynchus* sp.  
*Leptospermum lanigerum*  
*Leptospermum obovatum*  
*Lythrum hyssopifolia*  
*Ozothamnus ferrugineus*  
 #*Perlargonium rodneyanum*  
*Pimelea curviflora*  
*Pimelea glauca*  
 #*Ptilotus macrocephalus*

## Featherheads

*Pimelea humilis*  
*Platylobium obtusangulum*  
*Pratia* sp.  
*Rubus parviflorus*

*Senecio quadridentatus*  
*Stackhousia* sp.  
*Stylidium graminifolium*  
 #*Stackhousia monogyna*  
 + *Veronica gracilis*  
 + *Wahlenbergia luteola*  
*Wahlenbergia* sp.

+ Additions from M.Trengrove – Nov 1997

# Additions from W.Huggins – Geelong Field Naturalists

Source: Original plant list compiled by Chris Hose, Dec 1992 – Jan 1993.

## Winchelsea Common

### Grasses

*Danthonia setacea*  
*Deyeuxia quadriseta*  
*Dichelachne crinita*  
*Microlaena stipoides*  
*Poa labillardieri*  
*Poa tenera*  
*Themeda triandra*  
*Vulpia bromoides*  
*Vulpia myuros*

### Lilies & Allied Plants

*Burchardia umbellata*  
*Caesia calliantha*  
*Dianella revoluta*  
*Dianella longifolia* var. *longifolia*

Swamp Gum  
 Manna Gum  
 Common Raspwort  
 Varied Raspwort  
 Silky Guinea Flower  
 Running Postman  
 Wiry Buttons  
 Buttons  
 Woolly Tea-tree  
 River Tea-tree  
 Small Loosestrife  
 Tree Everlasting  
 Magenta Stork's-bill  
 Curved Rice Flower  
 Smooth Rice Flower  
 Tall Mulla Mulla

Common Rice Flower  
 Common Flat Pea  
 Pratia  
 Small-leaf Bramble, Native  
 Raspberry  
 Common Fireweed  
 Stackhousia  
 Grass Trigger-plant  
 Creamy Candles  
 Slender Speedwell  
 Brown-black Bluebell  
 Blue Bell

*Juncus pallidus*  
*Juncus procerus*  
*Linum usitatissimum*  
*Luzula meridionalis* var. *densiflora*  
*Tricoryne elatior*  
*Thysanotus tuberosus*

## Orchids & Ferns

*Microtis parviflora*  
*Microtis unifolia*  
*Thelymitra pauciflora*

Slender Onion-orchid  
 Common Onion-orchid  
 Slender Sun-orchid

## Dicotyledons

*Acacia paradoxa*  
*Acacia mearnsii*  
*Acacia melanoxylon*  
*Acaena agnipila*  
*Arctotheca calendula*  
*Allocasuarina verticillata*  
*Centaurium erythraea*  
*Convolvulus erubescens*  
*Drosera peltata*  
*Eryngium ovinum*  
*Eucalyptus botryoides*  
*Eucalyptus camaldulensis*  
*Euchiton involucratus*  
*Euchiton luteo-album*  
*Gonocarpus tetragynus*  
*Leptorhynchus squamatus*  
*Leptorhynchus tenuifolius*  
*Oxalis corniculata*  
*Veronica gracilis*  
*Wahlenbergia stricta*

Pale Rush  
 Rush  
 Flax  
 Common Woodrush  
 Yellow Rush-lily  
 Common Fringe-lily

Hedge Wattle  
 Black Wattle  
 Blackwood Wattle  
 Hairy Sheep's Burr  
 Cape Weed  
 Drooping She-oak  
 Common Centaury  
 Pink Bindweed  
 Pale Sundew  
 Blue Devil  
 Southern mahogany  
 River Red Gum  
 Cudweed  
 Jersey Cudweed  
 Common Raspwort  
 Scaly Buttons  
 Wiry Buttons  
 Yellow Wood-sorrel  
 Slender Speedwell  
 Tall Bluebell

## APPENDIX D

### INDIGENOUS PLANTS SUITABLE FOR PLANTING NEAR DRAINS AND SEWERS

#### Schedule A

May be planted no closer than 2m to any sewer or main connection.

*Acacia acinacea*  
*Acacia retinoides*  
*Acacia verniciflua*  
*Banksia marginata*  
*Leptospermum lanigerum*

Gold-dust Wattle  
 Wirilda  
 Varnish Wattle  
 Silver Banksia  
 Woolly Tea tree



## Schedule B

May be planted no closer than 4m to any sewer or main connection.

<i>Allocasuarina verticillata</i>	Drooping Sheoak
<i>Eucalyptus leucoxydon</i>	Yellow Gum
<i>Eucalyptus tricarpa</i>	Red Ironbark
<i>Melaleuca lanceolata</i>	Moonah
<i>Myoporum insulare</i>	Boobialla

## REFERENCES

Anonymous (undated) "*Lorne Planting Guide*".

City of Frankston, Shire of Flinders, Hastings and Mornington and Melbourne Water (undated) "*Mornington Peninsular Local Plants*".

Clark, Geoff (undated) "*Some Thoughts on Creating a Bushland Garden*". ANGAIR

Corrick, Margaret G & Fuhrer, Bruce A (undated) "*Wildflowers of Victoria*". Blooming Books, Melbourne.

Costermans, Leon (1998) "*Native Trees & Shrubs of South – Eastern Australia*", Lansdowne Printing, Sydney.

Department of Natural Resources & Environment (2000) "*Indigenous Trees & Shrubs of the West Port Phillip Region*", Bri-ter Offset Printing, Geelong West.

Department of Natural Resources & Environment (undated) "*Appendix C: Descriptions of Ecological Vegetation Classes (EVC'S) occurring in the Victorian West RFA Region*", DNRE.

Department of Natural Resources and Environment (1998) "*Wild Plants of Victoria*", Viridans Biological Databases, Melbourne.

Jones, David & Barbara (1999) "*Native Plants of Melbourne & Adjoining Areas*" Blooming Books, Melbourne.

Marriott, Neil & Jane (1998) "*Grassland Plants of South –Eastern Australia*". Blooming Books, Melbourne.

Shire of Barrabool (1991) "*Anglesea Townscape Study: The Great Ocean Road Corridor*", Mexted Rimmer Associates Pty Ltd, Geelong.

Society for Growing Australian Plants Maroondah, Inc. (1991) "*Flora of Melbourne: A Guide to the Indigenous Plants of the Greater Melbourne Area*", Society for Growing Australian Plants Maroondah, Inc.

Surf Coast Shire and ANGAIR (2002) "*Environmental Weeds: Invaders of our Surf Coast*", Adams Printers, Geelong

Trengove, M (2002) "*Anglesea Neighbourhood Character Study: Preliminary Vegetation Report*", unpublished.

White, Mary D (1989) "*The Flowers of Anglesea River Valley*". Lutheran Publishing House, Adelaide.

White, Mary D (1990) "*Coastal Vegetation of Anglesea - Airey's Inlet Region*" Lutheran Publishing House, Adelaide.

## PHOTO ACKNOWLEDGMENTS

ANGAIR Inc  
Elise Jeffery  
Donna Groves

