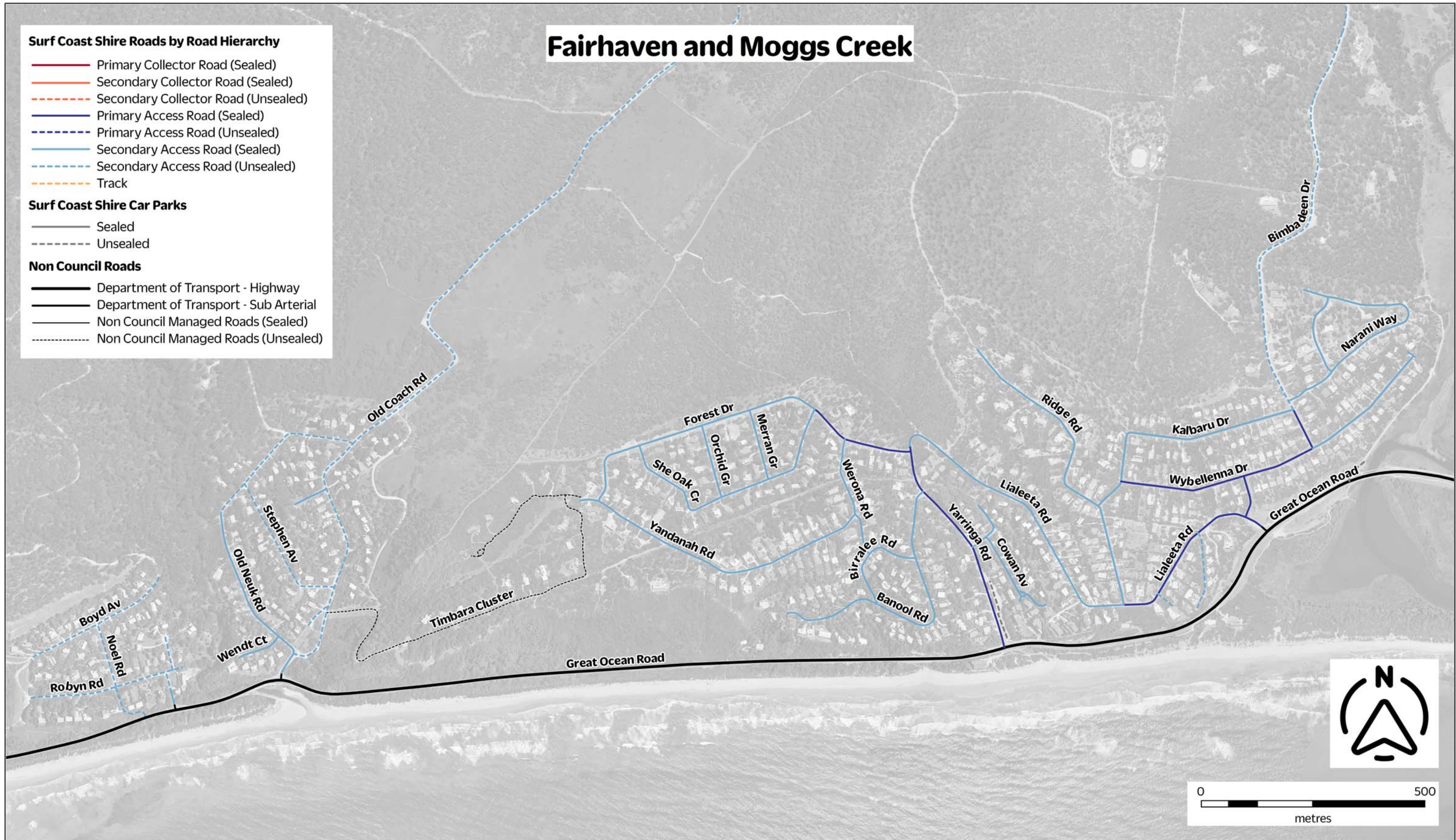


Fairhaven and Moggs Creek

- Surf Coast Shire Roads by Road Hierarchy**
- Primary Collector Road (Sealed)
 - Secondary Collector Road (Sealed)
 - - Secondary Collector Road (Unsealed)
 - Primary Access Road (Sealed)
 - - Primary Access Road (Unsealed)
 - Secondary Access Road (Sealed)
 - - Secondary Access Road (Unsealed)
 - - Track
- Surf Coast Shire Car Parks**
- Sealed
 - - Unsealed
- Non Council Roads**
- Department of Transport - Highway
 - Department of Transport - Sub Arterial
 - Non Council Managed Roads (Sealed)
 - - Non Council Managed Roads (Unsealed)



1 Merrijig Drive (PO Box 350) Torquay VIC 3228
 p. (03)5261 0600 e. info@surfcoast.vic.gov.au surfcoast.vic.gov.au



This material may be of assistance to you but the Surf Coast Shire and its employees do not guarantee that the publication is without flaw of any kind or is wholly appropriate for your particular purposes and therefore disclaims all liability for any error, loss or consequences which may arise from your relying on any information contained in this material.

This map is produced on the Geocentric Datum of Australia (GDA94). Surf Coast Shire uses the Map Grid of Australia (MGA94) Zone 55 projection.

Wadawurrung Country